

For Research Use Only

MAP1LC3A,LC3 Monoclonal antibody, PBS Only (Detector)

Catalog Number:66139-5-PBS



Basic Information

Catalog Number: 66139-5-PBS	GenBank Accession Number: BC015810	Purification Method: Protein G purification
Size: 100ug , Concentration: 1 mg/ml by Nanodrop;	GeneID (NCBI): 84557	CloneNo.: 2A4G9
Source: Mouse	UNIPROT ID: Q9H492	
Isotype: IgG1	Full Name: microtubule-associated protein 1 light chain 3 alpha	
Immunogen Catalog Number: AG17959	Calculated MW: 121 aa, 14 kDa	

Applications

Tested Applications:
Cytometric bead array, Indirect ELISA, Sample test

Species Specificity:
human

Product Information

66139-5-PBS targets MAP1LC3A,LC3 as part of a matched antibody pair:

MP51371-1: 66139-4-PBS capture and 66139-5-PBS detection (validated in Cytometric bead array)

Unconjugated mouse monoclonal antibody pair in PBS only (BSA and azide free) storage buffer at a concentration of 1 mg/mL, ready for conjugation.

This conjugation ready format makes antibodies ideal for use in many applications including: ELISAs, multiplex assays requiring matched pairs, mass cytometry, and multiplex imaging applications. Antibody use should be optimized by the end user for each application and assay.

Storage

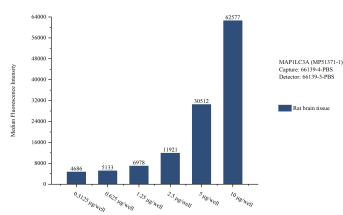
Storage:
Store at -80°C.

Storage Buffer:
PBS only, pH7.3

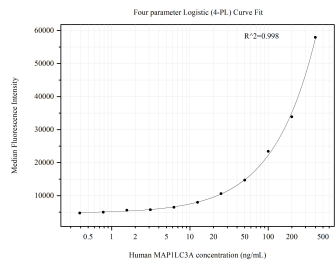
For technical support and original validation data for this product please contact:
T: 1 (888) 4PTGLAB (1-888-478-4522) (toll free in USA), or 1(312) 455-8498 (outside USA)
E: proteintech@ptglab.com
W: ptglab.com

This product is exclusively available under Proteintech Group brand and is not available to purchase from any other manufacturer.

Selected Validation Data



Sample test of MP51371-1, MAP1LC3A,LC3 Monoclonal Matched Antibody Pair, PBS Only. Capture antibody: 66139-4-PBS. Detection antibody: 66139-5-PBS.



Cytometric bead array standard curve of MP51371-1, MAP1LC3A,LC3 Monoclonal Matched Antibody Pair, PBS Only. Capture antibody: 66139-4-PBS. Detection antibody: 66139-5-PBS. Standard:Ag17959. Range: 0.391-400 ng/mL.