

For Research Use Only

IL-16 Monoclonal antibody

Catalog Number: 66145-1-Ig



Basic Information

Catalog Number: 66145-1-Ig	GenBank Accession Number: BC040272	Purification Method: Protein A purification
Size: 150ul , Concentration: 2600 ug/ml by Nanodrop and 1520 ug/ml by Bradford method using BSA as the standard;	GeneID (NCBI): 3603	CloneNo.: 1C4C7
Source: Mouse	UNIPROT ID: Q14005	Recommended Dilutions: WB 1:5000-1:50000
Isotype: IgG2b	Full Name: interleukin 16 (lymphocyte chemoattractant factor)	
Immunogen Catalog Number: AG16466	Calculated MW: 130 aa, 15 kDa	
	Observed MW: 37 kDa	

Applications

Tested Applications: WB, ELISA	Positive Controls: WB : Recombinant protein,
Species Specificity: human	

Background Information

IL-16 is a pleiotropic cytokine that functions as a chemoattractant, a modulator of T cell activation, and an inhibitor of HIV replication. It is mainly produced by T lymphocytes but also by other immune cells, neuronal cells, fibroblasts and epithelial cells. The signaling process of this cytokine is mediated by CD4. IL-16 induces chemotaxis of CD4+ cells such as lymphocytes, eosinophils, and dendritic cells by ligating CD4 directly at a site distinct from other ligands. Among its multiple functions, IL-16 is a T cell chemoattractant involved in T helper cell inflammatory responses and the regulation of both T cell growth, and responsiveness to regulatory cytokines. The cytokine function is exclusively attributed to the secreted C-terminal peptide, while the N-terminal product may play a role in cell cycle control.

Storage

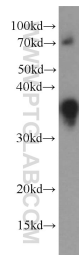
Storage:
Store at -20°C. Stable for one year after shipment.
Storage Buffer:
PBS with 0.02% sodium azide and 50% glycerol pH 7.3.
Aliquoting is unnecessary for -20°C storage

*** 20ul sizes contain 0.1% BSA

For technical support and original validation data for this product please contact:
T: 1 (888) 4PTGLAB (1-888-478-4522) (toll free in USA), or 1(312) 455-8498 (outside USA)
E: proteintech@ptglab.com
W: ptglab.com

This product is exclusively available under Proteintech Group brand and is not available to purchase from any other manufacturer.

Selected Validation Data



Recombinant protein were subjected to SDS PAGE followed by western blot with 66145-1-Ig (IL-16 antibody) at dilution of 1:20000 incubated at room temperature for 1.5 hours.