

For Research Use Only

Ceruloplasmin Monoclonal antibody

Catalog Number: 66156-1-Ig **5 Publications**



Basic Information

Catalog Number: 66156-1-Ig	GenBank Accession Number: BC146663	Purification Method: Protein G purification
Size: 150ul , Concentration: 1000 ug/ml by Bradford method using BSA as the standard;	GeneID (NCBI): 1356	CloneNo.: 3C8A5
Source: Mouse	UNIPROT ID: P00450	Recommended Dilutions: WB 1:1000-1:5000 IHC 1:20-1:200 IF/ICC 1:400-1:1600
Isotype: IgG1	Full Name: ceruloplasmin (ferroxidase)	
Immunogen Catalog Number: AG15535	Calculated MW: 1065 aa, 122 kDa	
	Observed MW: 140 kDa	

Applications

Tested Applications: WB, IHC, IF/ICC, ELISA	Positive Controls: WB : human placenta tissue, rat liver tissue, HSC-T6 cells, human kidney tissue, human blood tissue IHC : human ovary tumor tissue, human placenta tissue, human liver tissue IF/ICC : HeLa cells,
Cited Applications: WB, IHC	
Species Specificity: human, rat	
Cited Species: human, mouse	
Note-IHC: suggested antigen retrieval with TE buffer pH 9.0; (*) Alternatively, antigen retrieval may be performed with citrate buffer pH 6.0	

Background Information

Ceruloplasmin (CP) is a serum glycoprotein synthesized by hepatocytes and functions as the major transport protein of copper in blood where it acts as ferroxidase and is required for iron transport of transferrin. The intact ceruloplasmin migrated around 130-140 kDa and some proteolytic cleaved fragments could also be observed.

Notable Publications

Author	Pubmed ID	Journal	Application
Ni Yang	31706944	J Proteomics	WB
Marta Zarà	34360827	Int J Mol Sci	WB
Yong Zhang	34449964	FEBS Open Bio	WB, IHC

Storage

Storage:
Store at -20°C. Stable for one year after shipment.
Storage Buffer:
PBS with 0.02% sodium azide and 50% glycerol pH 7.3.
Aliquoting is unnecessary for -20°C storage

*** 20ul sizes contain 0.1% BSA

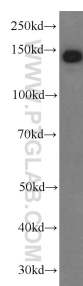
For technical support and original validation data for this product please contact:
T: 1 (888) 4PTGLAB (1-888-478-4522) (toll free in USA), or 1(312) 455-8498 (outside USA)
E: proteintech@ptglab.com
W: ptglab.com

This product is exclusively available under Proteintech Group brand and is not available to purchase from any other manufacturer.

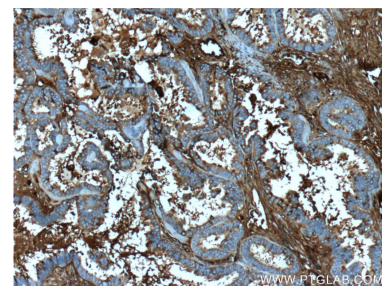
Selected Validation Data



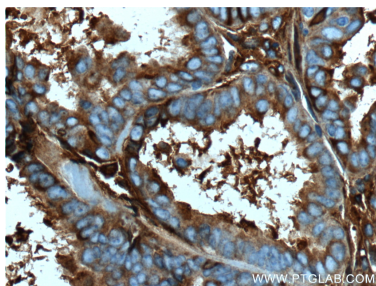
rat liver tissue were subjected to SDS PAGE followed by western blot with 66156-1-Ig (Ceruloplasmin antibody) at dilution of 1:5000 incubated at room temperature for 1.5 hours.



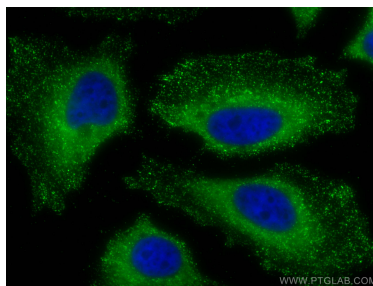
human placenta tissue were subjected to SDS PAGE followed by western blot with 66156-1-Ig (Ceruloplasmin antibody at dilution of 1:1000 incubated at room temperature for 1.5 hours.



Immunohistochemical analysis of paraffin-embedded human ovary tumor tissue slide using 66156-1-Ig (Ceruloplasmin antibody at dilution of 1:200 (under 10x lens). Heat mediated antigen retrieval with Tris-EDTA buffer (pH 9.0).



Immunohistochemical analysis of paraffin-embedded human ovary tumor tissue slide using 66156-1-Ig (Ceruloplasmin antibody at dilution of 1:200 (under 40x lens). Heat mediated antigen retrieval with Tris-EDTA buffer (pH 9.0).



Immunofluorescent analysis of (-20°C Methanol) fixed HeLa cells using Ceruloplasmin antibody (66156-1-Ig, Clone: 3C8A5) at dilution of 1:800 and Coralite® 488-Conjugated Goat Anti-Mouse IgG(H+L).