

For Research Use Only

Ceruloplasmin Monoclonal antibody, PBS Only



Catalog Number: 66156-1-PBS

Basic Information

Catalog Number: 66156-1-PBS	GenBank Accession Number: BC146663	Purification Method: Protein G purification
Size: 100ug , Concentration: 1 mg/ml by Nanodrop;	GeneID (NCBI): 1356	CloneNo.: 3C8A5
Source: Mouse	UNIPROT ID: P00450	
Isotype: IgG1	Full Name: ceruloplasmin (ferroxidase)	
Immunogen Catalog Number: AG15535	Calculated MW: 1065 aa, 122 kDa	
	Observed MW: 140 kDa	

Applications

Tested Applications:
WB, IF, IHC, Indirect ELISA

Species Specificity:
human, rat

Background Information

Ceruloplasmin (CP) is a serum glycoprotein synthesized by hepatocytes and functions as the major transport protein of copper in blood where it acts as ferroxidase and is required for iron transport of transferrin. The intact ceruloplasmin migrated around 130-140 kDa and some proteolytic cleaved fragments could also be observed.

Storage

Storage:
Store at -80°C.

Storage Buffer:
PBS Only

For technical support and original validation data for this product please contact:
T: 1 (888) 4PTGLAB (1-888-478-4522) (toll free in USA), or 1(312) 455-8498 (outside USA)
E: proteintech@ptglab.com
W: ptglab.com

This product is exclusively available under Proteintech Group brand and is not available to purchase from any other manufacturer.

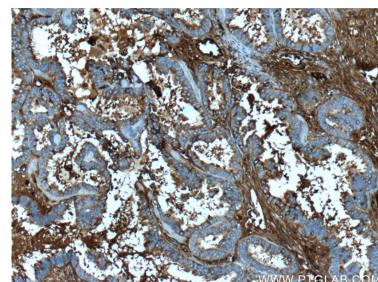
Selected Validation Data



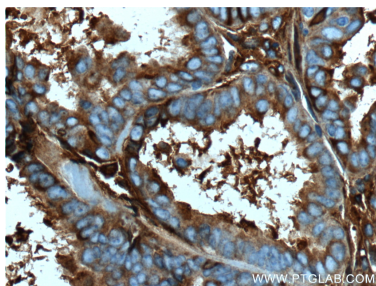
rat liver tissue were subjected to SDS PAGE followed by western blot with 66156-1-Ig (Ceruloplasmin antibody) at dilution of 1:5000 incubated at room temperature for 1.5 hours. This data was developed using the same antibody clone with 66156-1-PBS in a different storage buffer formulation.



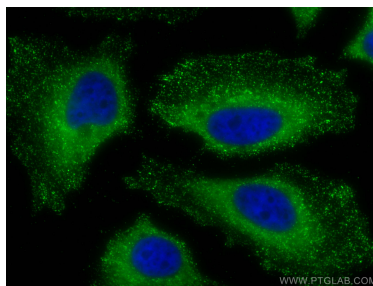
human placenta tissue were subjected to SDS PAGE followed by western blot with 66156-1-Ig (Ceruloplasmin antibody at dilution of 1:1000 incubated at room temperature for 1.5 hours. This data was developed using the same antibody clone with 66156-1-PBS in a different storage buffer formulation.



Immunohistochemical analysis of paraffin-embedded human ovary tumor tissue slide using 66156-1-Ig (Ceruloplasmin antibody at dilution of 1:200 (under 10x lens). Heat mediated antigen retrieval with Tris-EDTA buffer (pH 9.0). This data was developed using the same antibody clone with 66156-1-PBS in a different storage buffer formulation.



Immunohistochemical analysis of paraffin-embedded human ovary tumor tissue slide using 66156-1-Ig (Ceruloplasmin antibody at dilution of 1:200 (under 40x lens). Heat mediated antigen retrieval with Tris-EDTA buffer (pH 9.0). This data was developed using the same antibody clone with 66156-1-PBS in a different storage buffer formulation.



Immunofluorescent analysis of (-20°C Methanol) fixed HeLa cells using Ceruloplasmin antibody (66156-1-Ig, Clone: 3C8A5) at dilution of 1:800 and Coralite®488-Conjugated AffiniPure Goat Anti-Mouse IgG(H+L). This data was developed using the same antibody clone with 66156-1-PBS in a different storage buffer formulation.