

For Research Use Only

C3/C3b/C3c Monoclonal antibody, PBS Only

Catalog Number: 66157-1-PBS



Basic Information

Catalog Number: 66157-1-PBS	GenBank Accession Number: BC150179	Purification Method: Protein G purification
Size: 100ug, Concentration: 1mg/ml by Nanodrop;	GeneID (NCBI): 718	CloneNo.: 2A6B3
Source: Mouse	UNIPROT ID: P01024	
Isotype: IgG1	Full Name: complement component 3	
Immunogen Catalog Number: AG15955	Calculated MW: 1663 aa, 187 kDa	
	Observed MW: 115 kDa	

Applications

Tested Applications:
WB, IHC, IF/ICC, ELISA

Species Specificity:
human, mouse

Background Information

The complement system is an important effector that bridges the innate and adaptive immune systems (PMID: 20010915). The third component of complement, C3, plays a central role in the activation of the complement system. Its processing by C3 convertase is the central reaction in both classical and alternative complement pathways (PMID: 11414361). Human C3, composed of α and β chains (115 and 75 kDa, respectively), is cleaved into C3a and C3b by C3 convertase. C3b is further cleaved into iC3b, C3c, C3dg and C3f. This antibody raised against 1314-1663 aa of human C3 protein recognizes the C3 alpha chain, C3b alpha' chain, and C3c alpha' chain fragment 2.

Storage

Storage:
Store at -80°C.

Storage Buffer:
PBS Only

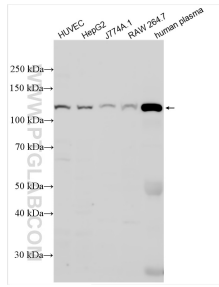
For technical support and original validation data for this product please contact:

T: 1 (888) 4PTGLAB (1-888-478-4522) (toll free in USA), or 1(312) 455-8498 (outside USA)

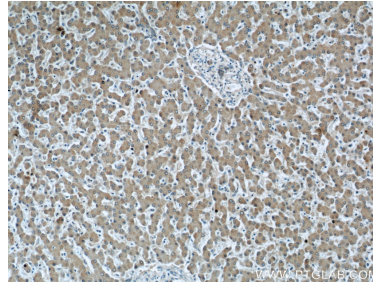
E: proteintech@ptglab.com
W: ptglab.com

This product is exclusively available under Proteintech Group brand and is not available to purchase from any other manufacturer.

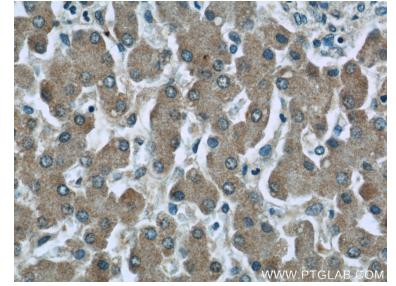
Selected Validation Data



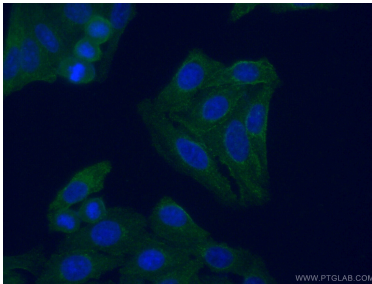
Various lysates were subjected to SDS PAGE followed by western blot with 66157-1-Ig (C3/C3b/C3c antibody) at dilution of 1:4000 incubated at room temperature for 1.5 hours. This data was developed using the same antibody clone with 66157-1-PBS in a different storage buffer formulation.



Immunohistochemical analysis of paraffin-embedded human liver tissue slide using 66157-1-Ig (C3/C3b/C3c antibody) at dilution of 1:50 (under 10x lens). This data was developed using the same antibody clone with 66157-1-PBS in a different storage buffer formulation.



Immunohistochemical analysis of paraffin-embedded human liver tissue slide using 66157-1-Ig (C3/C3b/C3c antibody) at dilution of 1:50 (under 40x lens). This data was developed using the same antibody clone with 66157-1-PBS in a different storage buffer formulation.



Immunofluorescent analysis of (-20°C Ethanol) fixed HepG2 cells using 66157-1-Ig (C3/C3b/C3c antibody) at dilution of 1:100 and Alexa Fluor 488-Conjugated AffiniPure Goat Anti-Mouse IgG(H+L). This data was developed using the same antibody clone with 66157-1-PBS in a different storage buffer formulation.