

For Research Use Only

ANP32B Monoclonal antibody, PBS Only (Detector)

Catalog Number: 66160-2-PBS



Basic Information

Catalog Number: 66160-2-PBS	GenBank Accession Number: BC013003	Purification Method: Protein A purification
Size: 100ug , Concentration: 1 mg/ml by Nanodrop;	GeneID (NCBI): 10541	CloneNo.: 3B6G9
Source: Mouse	UNIPROT ID: Q92688	
Isotype: IgG1	Full Name: acidic (leucine-rich) nuclear phosphoprotein 32 family, member B	
Immunogen Catalog Number: AG1274	Calculated MW: 29 kDa	

Applications

Tested Applications:
Cytometric bead array, Sandwich ELISA, Indirect ELISA, Sample test

Species Specificity:
human

Product Information

66160-2-PBS targets ANP32B as part of a matched antibody pair:

MP50363-1: 66160-1-PBS capture and 66160-2-PBS detection (validated in Cytometric bead array)

MP50363-3: 66160-3-PBS capture and 66160-2-PBS detection (validated in Cytometric bead array, Sandwich ELISA)

Unconjugated mouse monoclonal antibody pair in PBS only (BSA and azide free) storage buffer at a concentration of 1 mg/mL, ready for conjugation.

This conjugation ready format makes antibodies ideal for use in many applications including: ELISAs, multiplex assays requiring matched pairs, mass cytometry, and multiplex imaging applications. Antibody use should be optimized by the end user for each application and assay.

Storage

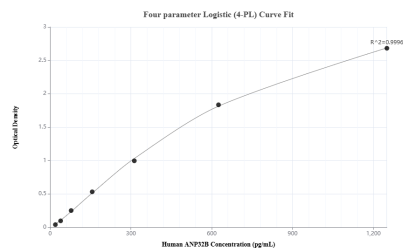
Storage:
Store at -80°C.

Storage Buffer:
PBS Only

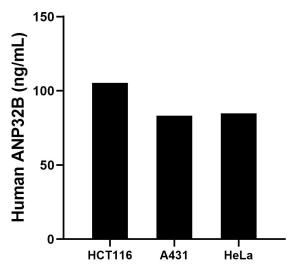
For technical support and original validation data for this product please contact:
T: 1 (888) 4PTGLAB (1-888-478-4522) (toll free in USA), or 1(312) 455-8498 (outside USA)
E: proteintech@ptglab.com
W: ptglab.com

This product is exclusively available under Proteintech Group brand and is not available to purchase from any other manufacturer.

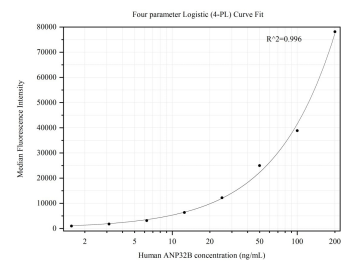
Selected Validation Data



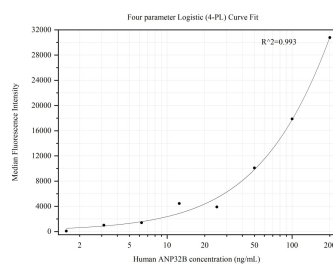
Sandwich ELISA standard curve of MP50363-3, Human ANP32B Monoclonal Matched Antibody Pair - PBS only. 66160-3-PBS was coated to a plate as the capture antibody and incubated with serial dilutions of standard Ag1274. 66160-2-PBS was HRP conjugated as the detection antibody. Range: 19.5-1250 pg/mL



The mean ANP32B concentration was determined to be 105.34 ng/mL in HCT116 cell extract based on a 2.0 mg/mL extract load, 83.16 ng/mL in A431 cell extract based on a 1.3 mg/mL extract load and 84.78 ng/mL in HeLa cell extract based on a 1.5 mg/mL extract load.



Cytometric bead array standard curve of MP50363-1, ANP32B Monoclonal Matched Antibody Pair, PBS Only. Capture antibody: 66160-1-PBS. Detection antibody: 66160-2-PBS. Standard:Ag1274. Range: 1.563-200 ng/mL



Cytometric bead array standard curve of MP50363-3, ANP32B Monoclonal Matched Antibody Pair, PBS Only. Capture antibody: 66160-3-PBS. Detection antibody: 66160-2-PBS. Standard:Ag1274. Range: 1.563-200 ng/mL