

For Research Use Only

# BMI1 Monoclonal antibody, PBS Only



Catalog Number: 66161-1-PBS

Featured Product

## Basic Information

Catalog Number:

66161-1-PBS

Size:

100ug, Concentration: 1 mg/ml by Nanodrop;

Source:

Mouse

Isotype:

IgG2b

Immunogen Catalog Number:

AG21284

GenBank Accession Number:

BC011652

GeneID (NCBI):

648

UNIPROT ID:

P35226

Full Name:

BMI1 polycomb ring finger oncogene

Calculated MW:

37 kDa

Observed MW:

37-43 kDa

Purification Method:

Protein A purification

CloneNo.:

2E10A11

## Applications

Tested Applications:

WB, IP, IF, IHC, ELISA

Species Specificity:

human, mouse, monkey

## Background Information

BMI-1 is one of polycomb group genes, which together with Ring1 strongly enhances the E3 ubiquitin ligase activity of the Ring2 catalytic subunit. Bmi1 plays an important role in the regulation of cell proliferation and senescence through repression of the p16Ink4a and p19Arf genes and is required for maintenance of adult hematopoietic and neural stem cells. The antibody reacts with the 37kd BMI1 protein.

## Storage

Storage:

Store at -20°C. Stable for one year after shipment.

Storage Buffer:

PBS only

Aliquoting is unnecessary for -20°C storage

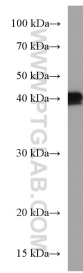
For technical support and original validation data for this product please contact:

T: 1 (888) 4PTGLAB (1-888-478-4522) (toll free in USA), or 1(312) 455-8498 (outside USA)

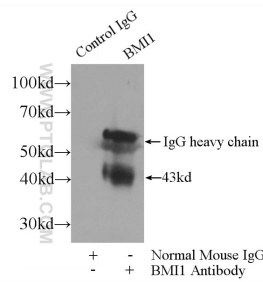
E: [proteintech@ptglab.com](mailto:proteintech@ptglab.com)  
W: [ptglab.com](http://ptglab.com)

This product is exclusively available under Proteintech Group brand and is not available to purchase from any other manufacturer.

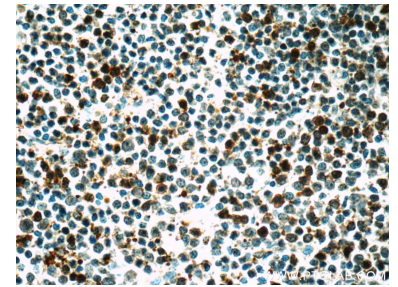
## Selected Validation Data



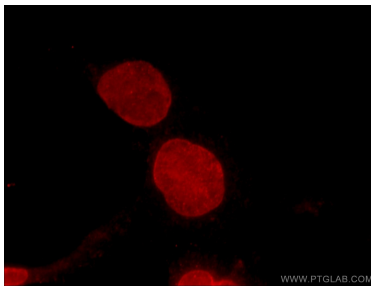
PC-12 cells were subjected to SDS PAGE followed by western blot with 66161-1-Ig (BMI 1 antibody) at dilution of 1:1500 incubated at room temperature for 1.5 hours. This data was developed using the same antibody clone with 66161-1-PBS in a different storage buffer formulation.



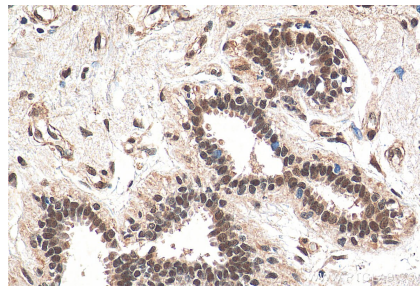
IP result of anti-BMI1 (IP:66161-1-Ig, 3ug; Detection:66161-1-Ig 1:1000) with HEK-293 cells lysate 1800ug. This data was developed using the same antibody clone with 66161-1-PBS in a different storage buffer formulation.



Immunohistochemical analysis of paraffin-embedded human lymphoma tissue slide using 66161-1-Ig (BMI1 Antibody) at dilution of 1:50 under 40x lens. This data was developed using the same antibody clone with 66161-1-PBS in a different storage buffer formulation.



Immunofluorescent analysis of COS-7 cells using 66161-1-Ig (BMI1 antibody) at dilution of 1:25 and Rhodamine-Goat anti-Mouse IgG. This data was developed using the same antibody clone with 66161-1-PBS in a different storage buffer formulation.



Immunohistochemical analysis of paraffin-embedded human breast cancer tissue slide using 66161-1-Ig (BMI1 antibody) at dilution of 1:200 (under 40x lens). Heat mediated antigen retrieval with Tris-EDTA buffer (pH 9.0). This data was developed using the same antibody clone with 66161-1-PBS in a different storage buffer formulation.