

For Research Use Only

Claudin 18 Monoclonal antibody

Catalog Number: 66167-1-Ig **3 Publications**



Basic Information

Catalog Number: 66167-1-Ig	GenBank Accession Number: BC146668	Purification Method: Protein A purification
Size: 150ul , Concentration: 1600 ug/ml by Nanodrop and 1000 ug/ml by Bradford method using BSA as the standard;	GeneID (NCBI): 51208	CloneNo.: 5G7F2
Source: Mouse	UNIPROT ID: P56856	Recommended Dilutions: IP 0.5-4.0 ug for 1.0-3.0 mg of total protein lysate IHC 1:500-1:2000
Isotype: IgG2a	Full Name: claudin 18	
Immunogen Catalog Number: AG15517	Calculated MW: 261 aa, 28 kDa	
	Observed MW: 29 kDa	

Applications

Tested Applications: IHC, IP, ELISA	Positive Controls: IP : mouse stomach tissue, IHC : human pancreas cancer tissue, human ovary tumor tissue, human stomach tissue
Cited Applications: IHC, IF	
Species Specificity: human, mouse	
Cited Species: human, mouse	
Note-IHC: suggested antigen retrieval with TE buffer pH 9.0; (*) Alternatively, antigen retrieval may be performed with citrate buffer pH 6.0	

Background Information

Claudin 18 (CLDN18) belongs to the large claudin family of proteins, which are tetraspan transmembrane proteins of tight junctions (PMID: 11585919; 18036336). Claudins exhibit specific patterns of expression in different tissues (PMID: 15447685). CLDN18 is specifically expressed in the stomach and lung. CLDN18 has two alternatively spliced variants, CLDN18.1 and CLDN18.2. CLDN18.2 is a highly selective gastric lineage marker that determines the gastric phenotype in a neoplastic condition, whereas CLDN18.1 is lung specific (PMID: 11585919; 21832145). Altered CLDN18 expression has been reported in various human malignancies, including gastric cancer, lung adenocarcinoma, and pancreatic neoplasm (PMID: 17459057; 22076167; 21832145). This antibody can recognize both CLDN18.1 and CLDN18.2.

Notable Publications

Author	Pubmed ID	Journal	Application
Nobuya Kurabe	27190696	World J Gastrointest Pathophysiol	
Bailey A Bye	37645960	bioRxiv	IF
Chih-Ming Weng	37536562	Mucosal Immunol	IHC,IF

Storage

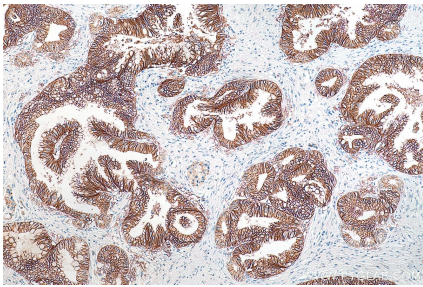
Storage:
Store at -20°C. Stable for one year after shipment.
Storage Buffer:
PBS with 0.02% sodium azide and 50% glycerol pH 7.3.
Aliquoting is unnecessary for -20°C storage

*** 20ul sizes contain 0.1% BSA

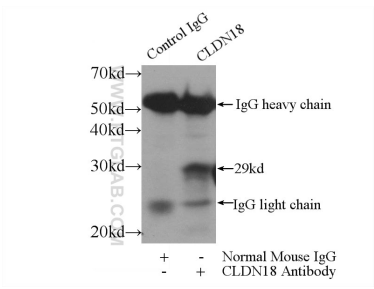
For technical support and original validation data for this product please contact:
T: 1 (888) 4PTGLAB (1-888-478-4522) (toll free in USA), or 1(312) 455-8498 (outside USA)
E: proteintech@ptglab.com
W: ptglab.com

This product is exclusively available under Proteintech Group brand and is not available to purchase from any other manufacturer.

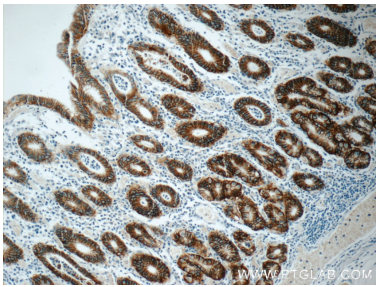
Selected Validation Data



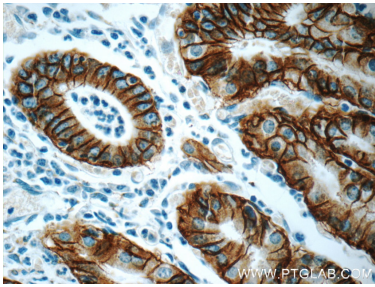
Immunohistochemical analysis of paraffin-embedded human pancreas cancer tissue slide using 66167-1-Ig (Claudin 18 antibody) at dilution of 1:1000 (under 10x lens). Heat mediated antigen retrieval with Tris-EDTA buffer (pH 9.0).



IP result of anti-Claudin 18 (IP:66167-1-Ig, 3ug; Detection:66167-1-Ig 1:300) with mouse stomach tissue lysate 4000ug.



Immunohistochemical analysis of paraffin-embedded human stomach tissue slide using 66167-1-Ig (Claudin 18 antibody at dilution of 1:1000).



Immunohistochemical analysis of paraffin-embedded human stomach tissue slide using 66167-1-Ig (Claudin 18 antibody at dilution of 1:1000).