

For Research Use Only

# HBG1/2-Specific Monoclonal antibody

Catalog Number: 66168-1-Ig



## Basic Information

Catalog Number: 66168-1-Ig	GenBank Accession Number: NM_000559	Purification Method: Protein A purification
Size: 150ul , Concentration: 2100 ug/ml by Nanodrop and 1473 ug/ml by Bradford method using BSA as the standard;	GeneID (NCBI): 3047	CloneNo.: 2A4B5
Source: Mouse	UNIPROT ID: P69891	Recommended Dilutions: IHC 1:200-1:16000
Isotype: IgG2a	Full Name: hemoglobin, gamma A	
	Calculated MW: 16 kDa	

## Applications

Tested Applications: IHC, ELISA	Positive Controls: IHC : human placenta tissue,
Species Specificity: human	

**Note-IHC: suggested antigen retrieval with TE buffer pH 9.0; (\*) Alternatively, antigen retrieval may be performed with citrate buffer pH 6.0**

## Background Information

HBG1, also named as Hb F Agamma, HBGA, HBGR and HSGGL, belongs to the globin family. HBG1 makes up the fetal hemoglobin F, in combination with alpha chains. Some gamma variants can cause severe jaundice and cyanosis in premature and new born babies. The antibody is specific to HBG1 and HBG2. The antibody has no cross reaction to HBB and HBD. HBG1 protein migrates around 16 kDa. Heterodimer of 32 kDa may also be observed. This antibody could identify HBG1 and HBG2.

## Storage

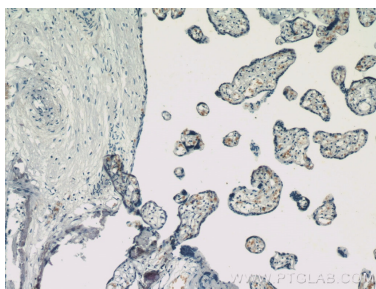
**Storage:**  
Store at -20°C. Stable for one year after shipment.  
**Storage Buffer:**  
PBS with 0.02% sodium azide and 50% glycerol pH 7.3.  
Aliquoting is unnecessary for -20°C storage

\*\*\* 20ul sizes contain 0.1% BSA

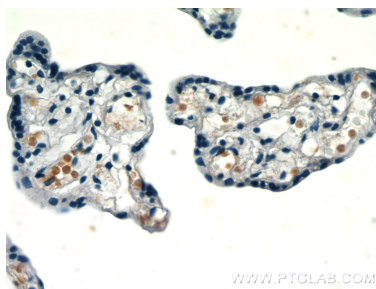
For technical support and original validation data for this product please contact:  
T: 1 (888) 4PTGLAB (1-888-478-4522) (toll free in USA), or 1(312) 455-8498 (outside USA)  
E: proteintech@ptglab.com  
W: ptglab.com

This product is exclusively available under Proteintech Group brand and is not available to purchase from any other manufacturer.

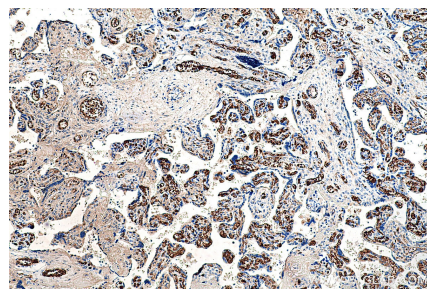
## Selected Validation Data



Immunohistochemical analysis of paraffin-embedded human placenta tissue slide using 66168-1-Ig (HBG1/2-Specific antibody) at dilution of 1:200 (under 10x lens).



Immunohistochemical analysis of paraffin-embedded human placenta tissue slide using 66168-1-Ig (HBG1-Specific antibody) at dilution of 1:200 (under 40x lens).



Immunohistochemical analysis of paraffin-embedded human placenta tissue slide using 66168-1-Ig (HBG1/2-Specific antibody) at dilution of 1:16000 (under 10x lens). Heat mediated antigen retrieval with Tris-EDTA buffer (pH 9.0).