

MSH6 Monoclonal antibody, PBS Only (Capture)

Catalog Number: 66172-2-PBS

Basic Information

Catalog Number: 66172-2-PBS	GenBank Accession Number: BC004246	Purification Method: Protein G purification
Size: 100ug, Concentration: 1mg/ml by Nanodrop;	GeneID (NCBI): 2956	CloneNo.: 5B5A7
Source: Mouse	UNIPROT ID: P52701	
Isotype: IgG1	Full Name: mutS homolog 6 (E. coli)	
Immunogen Catalog Number: AG12645	Calculated MW: 153 kDa	
	Observed MW: 150-160 kDa	

Applications

Tested Applications:
IHC, Cytometric bead array, Indirect ELISA

Species Specificity:
human

Product Information

66172-2-PBS targets MSH6 as part of a matched antibody pair:

MP50291-1: 66172-2-PBS capture and 66172-3-PBS detection (validated in Cytometric bead array)

MP50291-2: 66172-2-PBS capture and 66172-4-PBS detection (validated in Cytometric bead array)

Unconjugated mouse monoclonal antibody pair in PBS only (BSA and azide free) storage buffer at a concentration of 1 mg/mL, ready for conjugation.

This conjugation ready format makes antibodies ideal for use in many applications including: ELISAs, multiplex assays requiring matched pairs, mass cytometry, and multiplex imaging applications. Antibody use should be optimized by the end user for each application and assay.

Background Information

MSH6, also named as DNA mismatch repair protein Msh6 or GTMBP, is a 1360 amino acid protein, which contains one PWWP domain and belongs to the DNA mismatch repair MutS family. MSH6 localizes in the nucleus and is a component of the post-replicative DNA mismatch repair system. Msh2 and Msh6 form a protein complex required to repair mismatches generated during DNA replication.

Storage

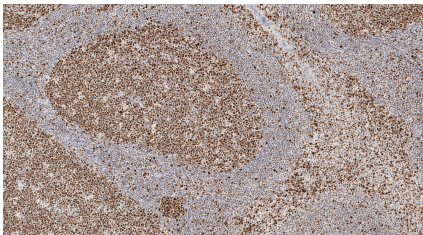
Storage:
Store at -80°C.

Storage Buffer:
PBS Only

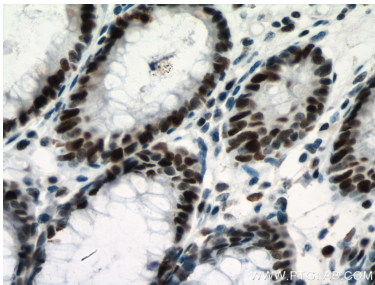
For technical support and original validation data for this product please contact:
T: 1 (888) 4PTGLAB (1-888-478-4522) (toll free in USA), or 1(312) 455-8498 (outside USA)
E: proteintech@ptglab.com
W: ptglab.com

This product is exclusively available under Proteintech Group brand and is not available to purchase from any other manufacturer.

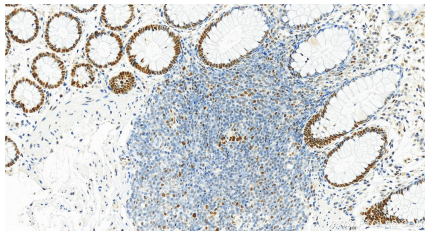
Selected Validation Data



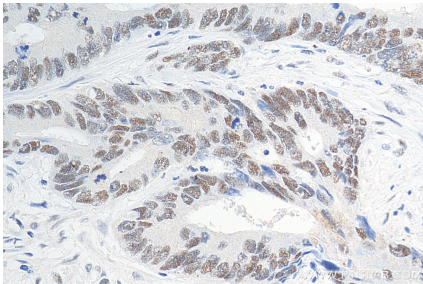
Immunohistochemical analysis of paraffin-embedded human tonsillitis tissue slide using 66172-2-Ig (MSH6 antibody) at dilution of 1:10000 (under 10x lens). Heat mediated antigen retrieval with Tris-EDTA buffer (pH 9.0). This data was developed using the same antibody clone with 66172-2-PBS in a different storage buffer formulation.



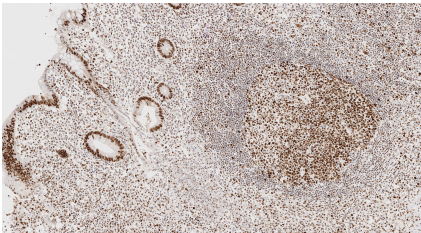
Immunohistochemical analysis of paraffin-embedded human colon cancer tissue slide using 66172-2-Ig (MSH6 antibody) at dilution of 1:2000 (under 40x lens). Heat mediated antigen retrieval with Tris-EDTA buffer (pH 9.0). This data was developed using the same antibody clone with 66172-2-PBS in a different storage buffer formulation.



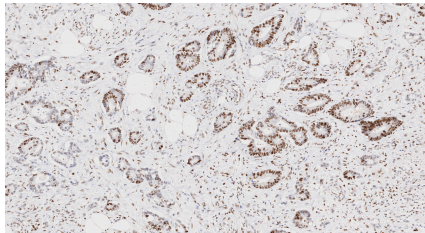
Immunohistochemical analysis of paraffin-embedded human normal colon slide using 66172-2-Ig (MSH6 antibody) at dilution of 1:4000 (under 20x lens). Heat mediated antigen retrieval with Tris-EDTA buffer (pH 9.0). This data was developed using the same antibody clone with 66172-2-PBS in a different storage buffer formulation.



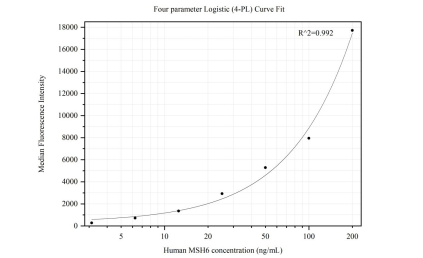
Immunohistochemical analysis of paraffin-embedded human colon cancer tissue slide using 66172-2-Ig (MSH6 antibody) at dilution of 1:2000 (under 40x lens). Heat mediated antigen retrieval with Tris-EDTA buffer (pH 9.0). This data was developed using the same antibody clone with 66172-2-PBS in a different storage buffer formulation.



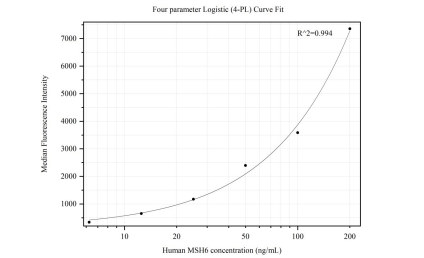
Immunohistochemical analysis of paraffin-embedded human appendicitis tissue slide using 66172-2-Ig (MSH6 antibody) at dilution of 1:10000 (under 10x lens). Heat mediated antigen retrieval with Tris-EDTA buffer (pH 9.0). This data was developed using the same antibody clone with 66172-2-PBS in a different storage buffer formulation.



Immunohistochemical analysis of paraffin-embedded human rectal cancer tissue slide using 66172-2-Ig (MSH6 antibody) at dilution of 1:10000 (under 10x lens). Heat mediated antigen retrieval with Tris-EDTA buffer (pH 9.0). This data was developed using the same antibody clone with 66172-2-PBS in a different storage buffer formulation.



Cytometric bead array standard curve of MP50291-1, MSH6 Monoclonal Matched Antibody Pair, PBS Only. Capture antibody: 66172-2-PBS. Detection antibody: 66172-3-PBS. Standard: Ag12645. Range: 3.125-200 ng/mL



Cytometric bead array standard curve of MP50291-2, MSH6 Monoclonal Matched Antibody Pair, PBS Only. Capture antibody: 66172-2-PBS. Detection antibody: 66172-4-PBS. Standard: Ag12645. Range: 6.25-200 ng/mL