

For Research Use Only

CNPY2, MSAP Monoclonal antibody

Catalog Number: 66173-1-Ig **Featured Product**



Basic Information

Catalog Number: 66173-1-Ig	GenBank Accession Number: BC065015	Purification Method: Protein A purification
Size: 150ul , Concentration: 1500 µg/ml by Nanodrop and 1133 µg/ml by Bradford method using BSA as the standard;	GeneID (NCBI): 10330	CloneNo.: 1G8G11
Source: Mouse	Full Name: canopy 2 homolog (zebrafish)	Recommended Dilutions: WB 1:2000-1:10000 IHC 1:50-1:500 IF 1:50-1:500
Isotype: IgG2b	Calculated MW: 21 kDa	
Immunogen Catalog Number: AG6363	Observed MW: 18-21 kDa	

Applications

Tested Applications: FC, IF, IHC, WB, ELISA	Positive Controls:
Species Specificity: human, mouse, rat, pig	WB: A549 cells, HepG2 cells, rat liver tissue, human placenta tissue, pig liver tissue, LNCaP cells, HeLa cells, Jurkat cells, K-562 cells, NIH/3T3 cells
Note-IHC: suggested antigen retrieval with TE buffer pH 9.0; (*) Alternatively, antigen retrieval may be performed with citrate buffer pH 6.0	IHC: human pancreas cancer tissue, IF: HepG2 cells,

Background Information

CNPY2, also named as MSAP, TMEM4 and ZSIG9, is a positive regulator of neurite outgrowth. It interacts with the ezrin-radixin-moesin (ERM)-like myosin regulatory light chain-interacting protein (MIR), and the two proteins are co-localized in cell lines and in primary neurons. CNPY2 can stabilize MRLC and thus bring about an increase in neurite outgrowth. (PMID: 12826659) This antibody is specific to CNPY2

Storage

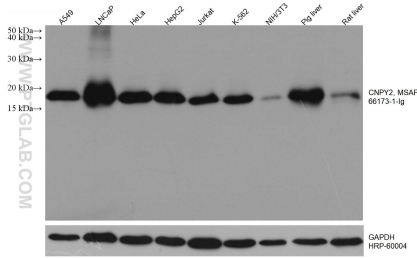
Storage:
Store at -20°C. Stable for one year after shipment.
Storage Buffer:
PBS with 0.02% sodium azide and 50% glycerol pH 7.3.
Aliquoting is unnecessary for -20°C storage

*** 20ul sizes contain 0.1% BSA

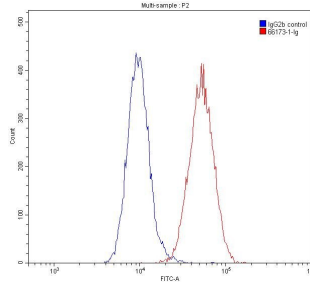
For technical support and original validation data for this product please contact:
T: 1 (888) 4PTGLAB (1-888-478-4522) (toll free in USA), or 1(312) 455-8498 (outside USA) E: proteintech@ptglab.com W: ptglab.com

This product is exclusively available under Proteintech Group brand and is not available to purchase from any other manufacturer.

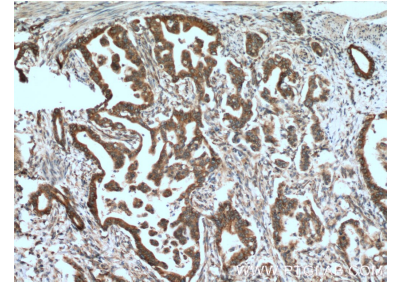
Selected Validation Data



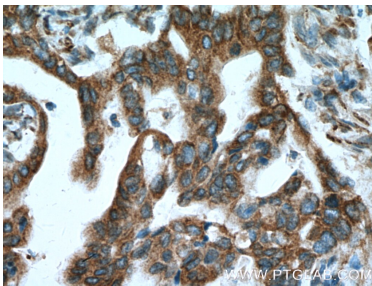
Various lysates were subjected to SDS PAGE followed by western blot with 66173-1-Ig (CNPY2, MSAP antibody) at dilution of 1:5000 incubated at room temperature for 1.5 hours. The membrane was stripped and reblotted with HRP-conjugated GAPDH Monoclonal antibody (HRP-60004) as loading control.



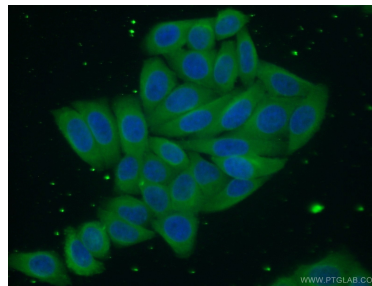
1×10^6 HepG2 cells were stained with 0.20ug CNPY2, MSAP antibody (66173-1-Ig, red) and control antibody (blue). Fixed with 90% MeOH.



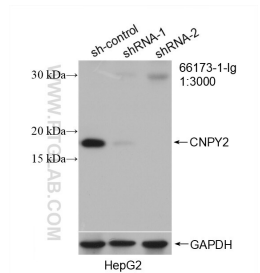
Immunohistochemical analysis of paraffin-embedded human pancreas cancer tissue slide using 66173-1-Ig (CNPY2, MSAP antibody at dilution of 1:500 (under 10x lens). Heat mediated antigen retrieval with Tris-EDTA buffer (pH 9.0).



Immunohistochemical analysis of paraffin-embedded human pancreas cancer tissue slide using 66173-1-Ig (CNPY2, MSAP antibody at dilution of 1:500 (under 40x lens). Heat mediated antigen retrieval with Tris-EDTA buffer (pH 9.0).



Immunofluorescent analysis of (10% Formaldehyde) fixed HepG2 cells using 66173-1-Ig(CNPY2, MSAP antibody) at dilution of 1:50 and Alexa Fluor 488-conjugated AffiniPure Goat Anti-mouse IgG(H+L).



WB result of CNPY2, MSAP antibody (66173-1-Ig; 1:3000; incubated at room temperature for 1.5 hours) with sh-Control and sh-CNPY2, MSAP transfected HepG2 cells.