

For Research Use Only

# TPSAB1 Monoclonal antibody, PBS Only (Capture)

Catalog Number: 66174-1-PBS



## Basic Information

<b>Catalog Number:</b> 66174-1-PBS	<b>GenBank Accession Number:</b> BC028059	<b>Purification Method:</b> Protein A purification
<b>Size:</b> 100ug , Concentration: 1mg/ml by Nanodrop;	<b>GeneID (NCBI):</b> 7177	<b>CloneNo.:</b> 6A10G1
<b>Source:</b> Mouse	<b>UNIPROT ID:</b> Q15661	
<b>Isotype:</b> IgG1	<b>Full Name:</b> tryptase alpha/beta 1	
<b>Immunogen Catalog Number:</b> AG4167	<b>Calculated MW:</b> 275 aa, 31 kDa	
	<b>Observed MW:</b> 31 kDa	

## Applications

**Tested Applications:**  
WB, IHC, Cytometric bead array, Indirect ELISA

**Species Specificity:**  
human

## Product Information

66174-1-PBS targets TPSAB1 as part of a matched antibody pair:

MP50385-1: 66174-1-PBS capture and 66174-2-PBS detection (validated in Cytometric bead array)

Unconjugated mouse monoclonal antibody pair in PBS only (BSA and azide free) storage buffer at a concentration of 1 mg/mL, ready for conjugation.

This conjugation ready format makes antibodies ideal for use in many applications including: ELISAs, multiplex assays requiring matched pairs, mass cytometry, and multiplex imaging applications. Antibody use should be optimized by the end user for each application and assay.

## Background Information

TPSAB1(Tryptase alpha/beta-1) is also named as TPS1, TPS2, TPSB1 and belongs to the peptidase S1 family. It is the major neutral protease present in mast cells and secreted upon the coupled activation-degranulation response of this cell type. TPSAB1 has 2 isoforms produced by alternative splicing with the molecular weight of 31 kDa and 29 kDa. This full length protein has two glycosylation sites.

## Storage

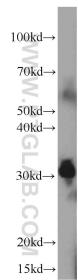
**Storage:**  
Store at -80°C.

**Storage Buffer:**  
PBS Only

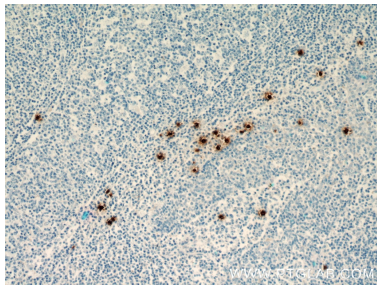
For technical support and original validation data for this product please contact:  
T: 1 (888) 4PTGLAB (1-888-478-4522) (toll free in USA), or 1(312) 455-8498 (outside USA)  
E: [proteintech@ptglab.com](mailto:proteintech@ptglab.com)  
W: [ptglab.com](http://ptglab.com)

This product is exclusively available under Proteintech Group brand and is not available to purchase from any other manufacturer.

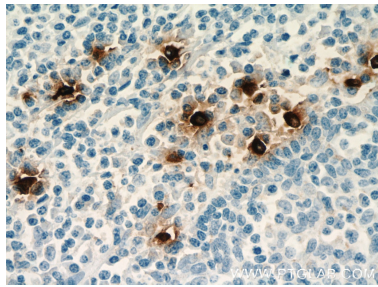
Selected Validation Data



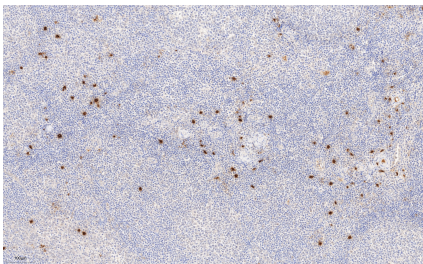
human kidney tissue were subjected to SDS PAGE followed by western blot with 66174-1-Ig (TPSAB1 Antibody) at dilution of 1:1000 incubated at room temperature for 1.5 hours. This data was developed using the same antibody clone with 66174-1-PBS in a different storage buffer formulation.



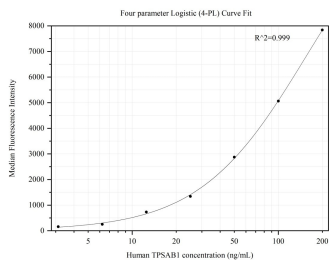
Immunohistochemical analysis of paraffin-embedded human tonsillitis tissue slide using 66174-1-Ig (TPSAB1 antibody) at dilution of 1:5000 (under 10x lens) microwave oven heating mediated antigen retrieved with . This data was developed using the same antibody clone with 66174-1-PBS in a different storage buffer formulation.



Immunohistochemical analysis of paraffin-embedded human tonsillitis tissue slide using 66174-1-Ig (TPSAB1 antibody) at dilution of 1:5000 (under 40x lens) microwave oven heating mediated antigen retrieved with . This data was developed using the same antibody clone with 66174-1-PBS in a different storage buffer formulation.



Immunohistochemical analysis of paraffin-embedded human tonsillitis tissue slide using 66174-1-Ig (TPSAB1 antibody) at dilution of 1:20000 (under 20x lens). Heat mediated antigen retrieval with Tris-EDTA buffer (pH 9.0). This data was developed using the same antibody clone with 66174-1-PBS in a different storage buffer formulation.



Cytometric bead array standard curve of MP50385-1, TPSAB1 Monoclonal Matched Antibody Pair, PBS Only. Capture antibody: 66174-1-PBS. Detection antibody: 66174-2-PBS. Standard:Ag4167. Range: 3.125-200 ng/mL.