

For Research Use Only

LBP Monoclonal antibody

Catalog Number: 66181-1-Ig **1 Publications**



Basic Information

Catalog Number: 66181-1-Ig	GenBank Accession Number: BC022256	Purification Method: Protein A purification
Size: 150ul, Concentration: 1200 ug/ml by Nanodrop and 1000 ug/ml by Bradford method using BSA as the standard;	GeneID (NCBI): 3929	CloneNo.: 3A7E3
Source: Mouse	UNIPROT ID: P18428	Recommended Dilutions: WB 1:500-1:2000 IHC 1:250-1:1000
Isotype: IgG2b	Full Name: lipopolysaccharide binding protein	
Immunogen Catalog Number: AG13485	Calculated MW: 481 aa, 53 kDa	
	Observed MW: 60 kDa	

Applications

Tested Applications: WB, IHC, ELISA	Positive Controls: WB : Jurkat cells, IHC : human liver cancer tissue, human liver tissue, human kidney tissue
Cited Applications: WB, IF	
Species Specificity: human	
Cited Species: human, mouse	
Note-IHC: suggested antigen retrieval with TE buffer pH 9.0; (*) Alternatively, antigen retrieval may be performed with citrate buffer pH 6.0	

Background Information

LBP (lipopolysaccharide-binding protein) is an acute-phase protein, predominantly synthesized by hepatocytes. It is present in normal serum at concentrations of 5 to 10 µg/ml, rising up to 200 µg/ml 24 h after induction of an acute-phase response. LBP binds to the lipid A moiety of bacterial lipopolysaccharides (LPS), a glycolipid present in the outer membrane of all Gram-negative bacteria, and acts as an affinity enhancer for CD14, facilitating its association with LPS. (PMID: 9665271; 11598069)

Notable Publications

Author	Pubmed ID	Journal	Application
Qilun Zhang	38615060	Nat Commun	WB,IF

Storage

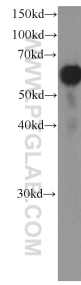
Storage:
Store at -20°C. Stable for one year after shipment.
Storage Buffer:
PBS with 0.02% sodium azide and 50% glycerol pH 7.3.
Aliquoting is unnecessary for -20°C storage

*** 20ul sizes contain 0.1% BSA

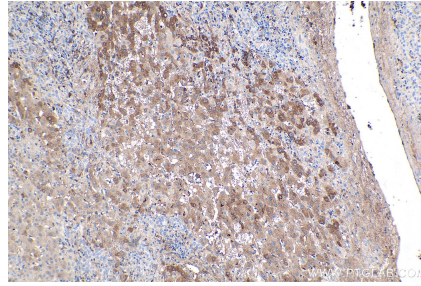
For technical support and original validation data for this product please contact:
T: 1 (888) 4PTGLAB (1-888-478-4522) (toll free in USA), or 1(312) 455-8498 (outside USA)
E: proteintech@ptglab.com
W: ptglab.com

This product is exclusively available under Proteintech Group brand and is not available to purchase from any other manufacturer.

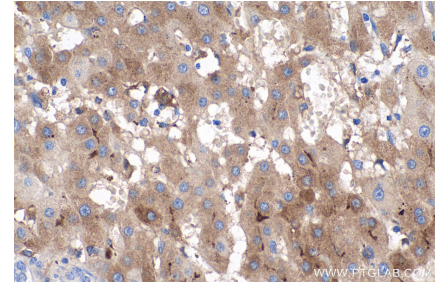
Selected Validation Data



Jurkat cells were subjected to SDS PAGE followed by western blot with 66181-1-Ig (LBP Antibody) at dilution of 1:1000 incubated at room temperature for 1.5 hours.



Immunohistochemical analysis of paraffin-embedded human liver cancer tissue slide using 66181-1-Ig (LBP antibody) at dilution of 1:500 (under 10x lens). Heat mediated antigen retrieval with Tris-EDTA buffer (pH 9.0).



Immunohistochemical analysis of paraffin-embedded human liver cancer tissue slide using 66181-1-Ig (LBP antibody) at dilution of 1:500 (under 40x lens). Heat mediated antigen retrieval with Tris-EDTA buffer (pH 9.0).