

For Research Use Only

# SMARCE1 Monoclonal antibody

Catalog Number: 66182-1-Ig



## Basic Information

<b>Catalog Number:</b> 66182-1-Ig	<b>GenBank Accession Number:</b> BC007082	<b>Purification Method:</b> Protein G purification
<b>Size:</b> 150ul, Concentration: 1800 µg/ml by Nanodrop and 1520 µg/ml by Bradford method using BSA as the standard;	<b>GeneID (NCBI):</b> 6605	<b>CloneNo.:</b> 1F3D6
<b>Source:</b> Mouse	<b>Full Name:</b> SWI/SNF related, matrix associated, actin dependent regulator of chromatin, subfamily e, member 1	<b>Recommended Dilutions:</b> WB 1:500-1:2000 IHC 1:20-1:200 IF 1:20-1:200
<b>Isotype:</b> IgG1	<b>Calculated MW:</b> 47 kDa	
<b>Immunogen Catalog Number:</b> AG1161	<b>Observed MW:</b> 50-55 kDa	

## Applications

<b>Tested Applications:</b> IF, IHC, WB, ELISA	<b>Positive Controls:</b>
<b>Species Specificity:</b> human, mouse, rat	<b>WB:</b> Jurkat cells, <b>IHC:</b> human breast cancer tissue, <b>IF:</b> HEK-293 cells,
<b>Note-IHC: suggested antigen retrieval with TE buffer pH 9.0; (*) Alternatively, antigen retrieval may be performed with citrate buffer pH 6.0</b>	

## Background Information

Via antagonizing chromatin-mediated transcriptional repression, the SWI/SNF complex in *S. cerevisiae* and *Drosophila* is thought to facilitate transcriptional activation of specific genes. The BRG1/brm-associated factors, or SMARCE1, complex in mammals is functionally related to SWI/SNF and consists of 9 to 12 subunits, some of which are homologous to SWI/SNF subunits. It contains a DNA-binding HMG domain and performs multiple biological functions, including DNA-, protein- and chromatin-binding, transcription coactivating activity, chromatin modification, DNA-dependent negative regulation of transcription, regulation of transcription of the RNA polymerase II promoter. In addition, SMARCE1, as an ER (estrogen receptor) subtype-selective modulator, regulates ER mediated transcription in a ligand-dependent manner and also directly binds to AR (androgen receptor) to alter its activity. The calculated molecular weight of SMARCE1 is 47 kDa, but modified SMARCE1 is about 55 kDa.

## Storage

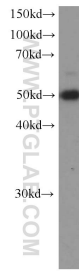
**Storage:**  
Store at -20°C. Stable for one year after shipment.  
**Storage Buffer:**  
PBS with 0.02% sodium azide and 50% glycerol pH 7.3.  
**Aliquoting is unnecessary for -20°C storage**

\*\*\* 20ul sizes contain 0.1% BSA

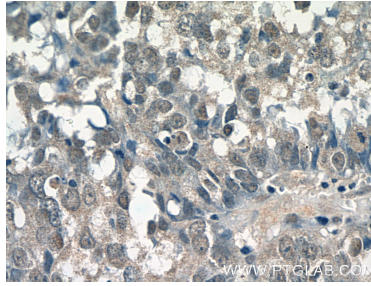
For technical support and original validation data for this product please contact:  
T: 1 (888) 4PTGLAB (1-888-478-4522) (toll free in USA), or 1(312) 455-8498 (outside USA) E: proteintech@ptglab.com W: ptglab.com

This product is exclusively available under Proteintech Group brand and is not available to purchase from any other manufacturer.

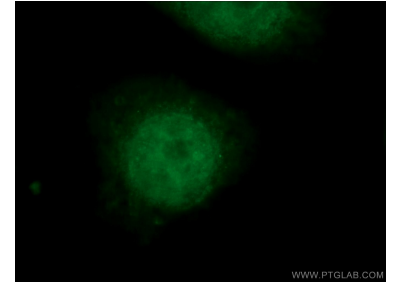
## Selected Validation Data



Jurkat cells were subjected to SDS PAGE followed by western blot with 66182-1-Ig (SMARCE1 Antibody) at dilution of 1:1000 incubated at room temperature for 1.5 hours.



Immunohistochemical analysis of paraffin-embedded human breast cancer tissue slide using 66182-1-Ig (SMARCE1 Antibody) at dilution of 1:100 (under 40x lens).



Immunofluorescent analysis of HEK-293 cells using 66182-1-Ig (SMARCE1 antibody) at dilution of 1:50 and FITC-Conjugated AffiniPure Goat Anti-Mouse IgG(H+L).