

For Research Use Only

Fibrinogen Beta Chain Monoclonal antibody

Catalog Number: 66186-1-Ig

2 Publications



Basic Information

Catalog Number: 66186-1-Ig	GenBank Accession Number: BC107766	Purification Method: Protein A purification
Size: 150ul , Concentration: 2900 ug/ml by Nanodrop and 1453 ug/ml by Bradford method using BSA as the standard;	GeneID (NCBI): 2244	CloneNo.: 1F8E4
Source: Mouse	UNIPROT ID: P02675	Recommended Dilutions: WB 1:500-1:2000
Isotype: IgG2b	Full Name: fibrinogen beta chain	
Immunogen Catalog Number: AG10205	Calculated MW: 491 aa, 56 kDa	
	Observed MW: 50 kDa	

Applications

Tested Applications: WB, ELISA	Positive Controls: WB : human heart tissue, fetal human brain tissue
Cited Applications: WB	
Species Specificity: human	
Cited Species: human	

Background Information

Fibrinogen is a soluble plasma glycoprotein synthesized in the liver. It is composed of two sets of three structurally different subunits: alpha (FGA), beta (FGB), gamma (FGG). Fibrinogen is converted by thrombin into fibrin during blood coagulation. Fibrinogen and fibrin play overlapping roles in blood clotting, fibrinolysis, cellular and matrix interactions, the inflammatory response, wound healing, and neoplasia (PMID: 16102057). FGB is the beta chain of fibrinogen. During conversion of fibrinogen to fibrin, fibrinopeptide B is cleaved from FGB by thrombin. Mutations in the gene of FGB lead to several disorders, including afibrinogenemia, dysfibrinogenemia, hypodysfibrinogenemia and thrombotic tendency.

Notable Publications

Author	Pubmed ID	Journal	Application
Yue Guan	33987362	Ann Transl Med	WB
Zhijian Huang	38704642	Int J Surg	

Storage

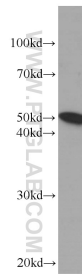
Storage:
Store at -20°C. Stable for one year after shipment.
Storage Buffer:
PBS with 0.02% sodium azide and 50% glycerol pH 7.3.
Aliquoting is unnecessary for -20°C storage

*** 20ul sizes contain 0.1%BSA

For technical support and original validation data for this product please contact:
T: 1 (888) 4PTGLAB (1-888-478-4522) (toll free in USA), or 1(312) 455-8498 (outside USA)
E: proteintech@ptglab.com
W: ptglab.com

This product is exclusively available under Proteintech Group brand and is not available to purchase from any other manufacturer.

Selected Validation Data



human heart tissue were subjected to SDS PAGE followed by western blot with 66186-1-Ig (Fibrinogen beta chain antibody at dilution of 1:1000 incubated at room temperature for 1.5 hours.