

For Research Use Only

Fibrinogen Beta Chain Monoclonal antibody, PBS Only



Catalog Number: 66186-1-PBS

Basic Information

Catalog Number: 66186-1-PBS	GenBank Accession Number: BC107766	Purification Method: Protein A purification
Size: 100ug , Concentration: 1 mg/ml by Nanodrop;	GeneID (NCBI): 2244	CloneNo.: 1F8E4
Source: Mouse	UNIPROT ID: P02675	
Isotype: IgG2b	Full Name: fibrinogen beta chain	
Immunogen Catalog Number: AG10205	Calculated MW: 491 aa, 56 kDa	
	Observed MW: 50 kDa	

Applications

Tested Applications:
WB, Indirect ELISA

Species Specificity:
human

Background Information

Fibrinogen is a soluble plasma glycoprotein synthesized in the liver. It is composed of two sets of three structurally different subunits: alpha (FGA), beta (FGB), gamma (FGG). Fibrinogen is converted by thrombin into fibrin during blood coagulation. Fibrinogen and fibrin play overlapping roles in blood clotting, fibrinolysis, cellular and matrix interactions, the inflammatory response, wound healing, and neoplasia (PMID: 16102057). FGB is the beta chain of fibrinogen. During conversion of fibrinogen to fibrin, fibrinopeptide B is cleaved from FGB by thrombin. Mutations in the gene of FGB lead to several disorders, including afibrinogenemia, dysfibrinogenemia, hypodysfibrinogenemia and thrombotic tendency.

Storage

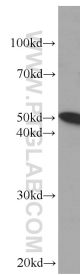
Storage:
Store at -80°C.

Storage Buffer:
PBS Only

For technical support and original validation data for this product please contact:
T: 1 (888) 4PTGLAB (1-888-478-4522) (toll free in USA), or 1(312) 455-8498 (outside USA)
E: proteintech@ptglab.com
W: ptglab.com

This product is exclusively available under Proteintech Group brand and is not available to purchase from any other manufacturer.

Selected Validation Data



human heart tissue were subjected to SDS PAGE followed by western blot with 66186-1-Ig (Fibrinogen beta chain antibody at dilution of 1:1000 incubated at room temperature for 1.5 hours. This data was developed using the same antibody clone with 66186-1-PBS in a different storage buffer formulation.