

## IL-22RA2 Monoclonal antibody

Catalog Number: 66190-1-Ig 3 Publications

## Basic Information

<b>Catalog Number:</b> 66190-1-Ig	<b>GenBank Accession Number:</b> BC125167	<b>Purification Method:</b> Protein A purification
<b>Size:</b> 150ul , Concentration: 3100 µg/ml by Nanodrop and 1347 µg/ml by Bradford method using BSA as the standard;	<b>GeneID (NCBI):</b> 116379	<b>CloneNo.:</b> 5G11A9
<b>Source:</b> Mouse	<b>Full Name:</b> interleukin 22 receptor, alpha 2	<b>Recommended Dilutions:</b> WB 1:500-1:2000 IHC 1:20-1:200 IF 1:200-1:800
<b>Isotype:</b> IgG2a	<b>Calculated MW:</b> 263 aa, 31 kDa	
<b>Immunogen Catalog Number:</b> AG18682	<b>Observed MW:</b> 35 kDa	

## Applications

<b>Tested Applications:</b> IF, IHC, WB, ELISA	<b>Positive Controls:</b>
<b>Cited Applications:</b> FC, IF, IHC, WB	<b>WB :</b> Raji cells,
<b>Species Specificity:</b> human	<b>IHC :</b> human small intestine tissue, human breast cancer tissue, human lung cancer tissue
<b>Cited Species:</b> human, pig	<b>IF :</b> human breast cancer tissue,
<b>Note-IHC: suggested antigen retrieval with TE buffer pH 9.0; (*) Alternatively, antigen retrieval may be performed with citrate buffer pH 6.0</b>	

## Background Information

Interleukin-22 receptor subunit alpha-2 (IL22RA2) is a soluble member of the type II cytokine receptor family. Through binding to IL22, IL22RA2 prevents the interaction of IL22 with the functional IL22-R complex and blocks the activity of IL22 (in vitro). IL22RA2 may play an important role as an IL22 antagonist in the regulation of inflammatory responses. Alternative splicing results in multiple transcript variants encoding distinct isoforms.

## Notable Publications

Author	Pubmed ID	Journal	Application
Gui-Yan Yang	28770173	Front Cell Infect Microbiol	WB,IHC
Paloma Gómez-Fernández	31936765	Cells	FC
Paloma Gómez-Fernández	30619294	Front Immunol	WB,IF

## Storage

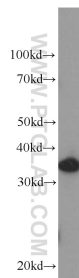
**Storage:**  
Store at -20°C. Stable for one year after shipment.  
**Storage Buffer:**  
PBS with 0.02% sodium azide and 50% glycerol pH 7.3.  
 Aliquoting is unnecessary for -20°C storage

\*\*\* 20ul sizes contain 0.1% BSA

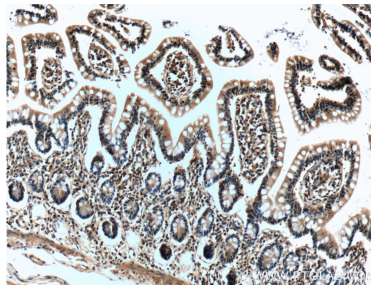
For technical support and original validation data for this product please contact:  
 T: 1 (888) 4PTGLAB (1-888-478-4522) (toll free in USA), or 1(312) 455-8498 (outside USA)  
 E: [proteintech@ptglab.com](mailto:proteintech@ptglab.com)  
 W: [ptglab.com](http://ptglab.com)

This product is exclusively available under Proteintech Group brand and is not available to purchase from any other manufacturer.

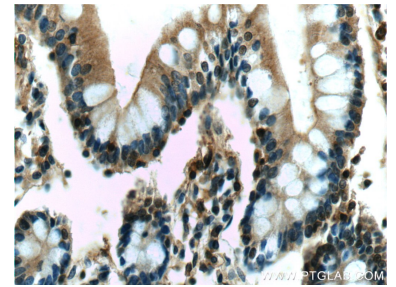
## Selected Validation Data



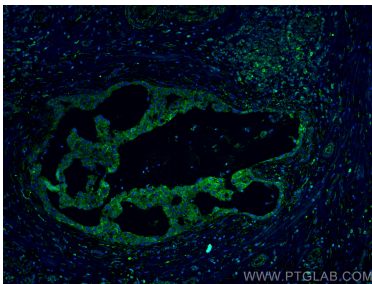
Raji cells were subjected to SDS PAGE followed by western blot with 66190-1-Ig (IL22RA2 Antibody) at dilution of 1:1000 incubated at room temperature for 1.5 hours.



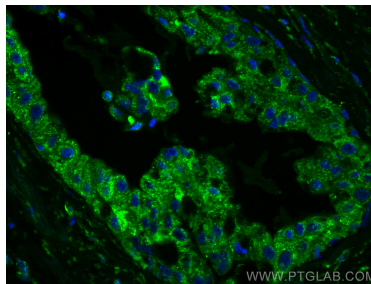
Immunohistochemical analysis of paraffin-embedded human small intestine tissue slide using 66190-1-Ig (IL22RA2 Antibody) at dilution of 1:50 (under 10x lens).



Immunohistochemical analysis of paraffin-embedded human small intestine tissue slide using 66190-1-Ig (IL22RA2 Antibody) at dilution of 1:50 (under 40x lens).



Immunofluorescent analysis of (4% PFA) fixed human breast cancer tissue using IL-22RA2 antibody (66190-1-Ig, Clone: 5G11A9) at dilution of 1:400 and CoraLite®488-Conjugated AffiniPure Goat Anti-Mouse IgG(H+L).



Immunofluorescent analysis of (4% PFA) fixed human breast cancer tissue using IL-22RA2 antibody (66190-1-Ig, Clone: 5G11A9) at dilution of 1:400 and CoraLite®488-Conjugated AffiniPure Goat Anti-Mouse IgG(H+L).