

For Research Use Only

# IL-22RA2 Monoclonal antibody, PBS Only



Catalog Number: 66190-1-PBS

## Basic Information

<b>Catalog Number:</b> 66190-1-PBS	<b>GenBank Accession Number:</b> BC125167	<b>Purification Method:</b> Protein A purification
<b>Size:</b> 100ug , Concentration: 1 mg/ml by Nanodrop;	<b>GeneID (NCBI):</b> 116379	<b>CloneNo.:</b> 5G11A9
<b>Source:</b> Mouse	<b>UNIPROT ID:</b> Q969J5	
<b>Isotype:</b> IgG2a	<b>Full Name:</b> interleukin 22 receptor, alpha 2	
<b>Immunogen Catalog Number:</b> AG18682	<b>Calculated MW:</b> 263 aa, 31 kDa	
	<b>Observed MW:</b> 35 kDa	

## Applications

**Tested Applications:**  
WB, IF, IHC, Indirect ELISA

**Species Specificity:**  
human

## Background Information

Interleukin-22 receptor subunit alpha-2 (IL22RA2) is a soluble member of the type II cytokine receptor family. Through binding to IL22, IL22RA2 prevents the interaction of IL22 with the functional IL22-R complex and blocks the activity of IL22 (in vitro). IL22RA2 may play an important role as an IL22 antagonist in the regulation of inflammatory responses. Alternative splicing results in multiple transcript variants encoding distinct isoforms.

## Storage

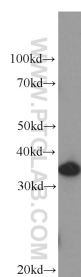
**Storage:**  
Store at -80°C.

**Storage Buffer:**  
PBS Only

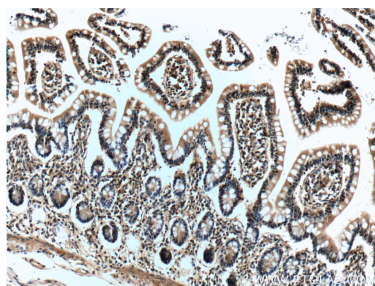
For technical support and original validation data for this product please contact:  
T: 1 (888) 4PTGLAB (1-888-478-4522) (toll free in USA), or 1(312) 455-8498 (outside USA)  
E: [proteintech@ptglab.com](mailto:proteintech@ptglab.com)  
W: [ptglab.com](http://ptglab.com)

This product is exclusively available under Proteintech Group brand and is not available to purchase from any other manufacturer.

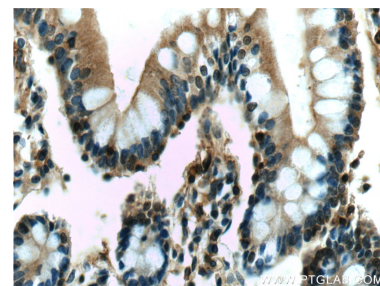
## Selected Validation Data



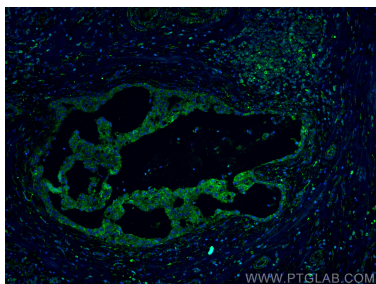
Raji cells were subjected to SDS PAGE followed by western blot with 66190-1-Ig (IL22RA2 Antibody) at dilution of 1:1000 incubated at room temperature for 1.5 hours. This data was developed using the same antibody clone with 66190-1-PBS in a different storage buffer formulation.



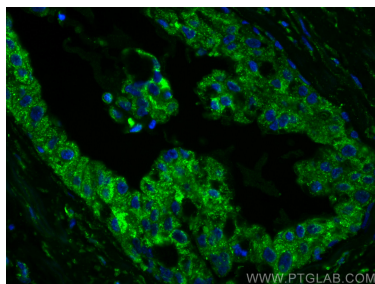
Immunohistochemical analysis of paraffin-embedded human small intestine tissue slide using 66190-1-Ig (IL22RA2 Antibody) at dilution of 1:50 (under 10x lens). This data was developed using the same antibody clone with 66190-1-PBS in a different storage buffer formulation.



Immunohistochemical analysis of paraffin-embedded human small intestine tissue slide using 66190-1-Ig (IL22RA2 Antibody) at dilution of 1:50 (under 40x lens). This data was developed using the same antibody clone with 66190-1-PBS in a different storage buffer formulation.



Immunofluorescent analysis of (4% PFA) fixed human breast cancer tissue using IL-22RA2 antibody (66190-1-Ig, Clone: 5G11A9) at dilution of 1:400 and CoraLite®488-Conjugated AffiniPure Goat Anti-Mouse IgG(H+L). This data was developed using the same antibody clone with 66190-1-PBS in a different storage buffer formulation.



Immunofluorescent analysis of (4% PFA) fixed human breast cancer tissue using IL-22RA2 antibody (66190-1-Ig, Clone: 5G11A9) at dilution of 1:400 and CoraLite®488-Conjugated AffiniPure Goat Anti-Mouse IgG(H+L). This data was developed using the same antibody clone with 66190-1-PBS in a different storage buffer formulation.