

For Research Use Only

ERK1/2 Monoclonal antibody

Catalog Number: 66192-1-Ig **26 Publications**



Basic Information

Catalog Number: 66192-1-Ig	GenBank Accession Number: BC013992	Purification Method: Protein G purification
Size: 150ul , Concentration: 1240 µg/ml by Bradford method using BSA as the standard;	GeneID (NCBI): 5595	CloneNo.: 4G8A11
Source: Mouse	Full Name: mitogen-activated protein kinase 3	Recommended Dilutions: WB 1:2000-1:10000 IHC 1:2000-1:6000 IF 1:200-1:800
Isotype: IgG1	Calculated MW: 43 kDa	
Immunogen Catalog Number: AG20350	Observed MW: 38-44 kDa	

Applications

Tested Applications:

IF, IHC, WB, ELISA

Cited Applications:

CoIP, WB

Species Specificity:

human, mouse

Cited Species:

human, rat, mouse

Note-IHC: suggested antigen retrieval with TE buffer pH 9.0; (*) Alternatively, antigen retrieval may be performed with citrate buffer pH 6.0

Positive Controls:

WB : HeLa cells, HepG2 cells, MCF-7 cells, HEK-293 cells, Jurkat cells, HSC-T6 cells, NIH/3T3 cells

IHC : human ovary tumor tissue, human cervical cancer tissue

IF : HeLa cells,

Background Information

ERK1 and ERK2 belongs to the protein kinase superfamily. It is involved in both the initiation and regulation of meiosis, mitosis, and postmitotic functions in differentiated cells by phosphorylating a number of transcription factors such as ELK-1. ERK1/2 catalyzed the reaction: ATP + a protein = ADP + a phosphoprotein. It is activated by tyrosine phosphorylation in response to INS and NGF. This antibody can recognize both ERK1 and ERK2 with the molecular mass of 38-44 kDa.

Notable Publications

Author	Pubmed ID	Journal	Application
Li Li	36166754	Br J Pharmacol	WB
Zhichao Dou	32956704	Exp Cell Res	WB
Mengnan Hu	36064579	Oncogene	WB

Storage

Storage:

Store at -20°C. Stable for one year after shipment.

Storage Buffer:

PBS with 0.02% sodium azide and 50% glycerol pH 7.3.

Aliquoting is unnecessary for -20°C storage

*** 20ul sizes contain 0.1% BSA

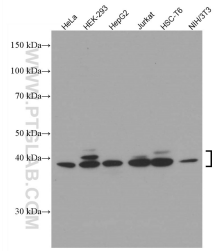
For technical support and original validation data for this product please contact:

T: 1 (888) 4PTGLAB (1-888-478-4522) (toll free in USA), or 1(312) 455-8498 (outside USA)

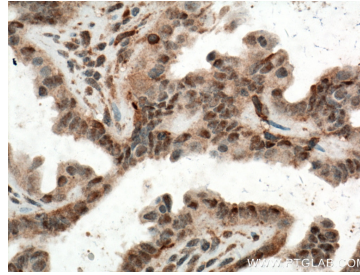
E: proteintech@ptglab.com
W: ptglab.com

This product is exclusively available under Proteintech Group brand and is not available to purchase from any other manufacturer.

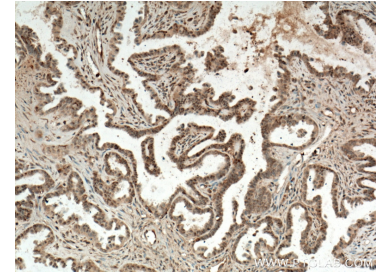
Selected Validation Data



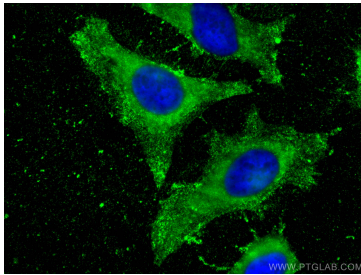
Various lysates were subjected to SDS PAGE followed by western blot with 66192-1-Ig (ERK1/2 antibody) at dilution of 1:10000 incubated at room temperature for 1.5 hours.



Immunohistochemical analysis of paraffin-embedded human ovary tumor tissue slide using 66192-1-Ig (ERK1/2 antibody) at dilution of 1:4000 (under 40x lens. Heat mediated antigen retrieval with Tris-EDTA buffer (pH 9.0).



Immunohistochemical analysis of paraffin-embedded human ovary tumor tissue slide using 66192-1-Ig (ERK1/2 antibody) at dilution of 1:4000 (under 10x lens. Heat mediated antigen retrieval with Tris-EDTA buffer (pH 9.0).



Immunofluorescent analysis of (-20°C Methanol) fixed HeLa cells using ERK1/2 antibody (66192-1-Ig, Clone: 4G8A11) at dilution of 1:400 and CoraLite®488-Conjugated AffiniPure Goat Anti-Mouse IgG(H+L).