

For Research Use Only

# MTA2 Monoclonal antibody, PBS Only

Catalog Number: 66195-1-PBS

Featured Product



## Basic Information

Catalog Number:

66195-1-PBS

Size:

100ug, Concentration: 1mg/ml by Nanodrop;

Source:

Mouse

Isotype:

IgG2b

Immunogen Catalog Number:

AG11713

GenBank Accession Number:

BC053650

GeneID (NCBI):

9219

UNIPROT ID:

O94776

Full Name:

metastasis associated 1 family, member 2

Calculated MW:

668 aa, 75 kDa

Observed MW:

75 kDa

Purification Method:

Protein A purification

CloneNo.:

2G12G4

## Applications

Tested Applications:

WB, IHC, IF/ICC, Indirect ELISA

Species Specificity:

human, mouse, rat

## Background Information

Metastasis-associated protein MTA2, also named as MTA1L1 or PID, is a 668 amino acid protein, which contains one BAH domain, one ELM2 domain, one GATA-type zinc finger and one SANT domain. MTA2 localizes in the nucleus and is widely expressed in many tissues. MTA2 may be involved in the regulation of gene expression as repressor and activator.

## Storage

Storage:

Store at -80°C.

Storage Buffer:

PBS Only

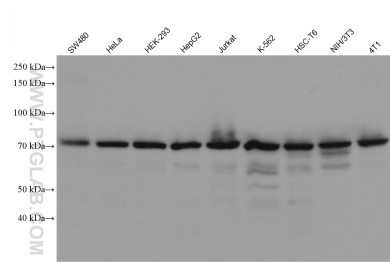
For technical support and original validation data for this product please contact:

T: 1 (888) 4PTGLAB (1-888-478-4522) (toll free in USA), or 1(312) 455-8498 (outside USA)

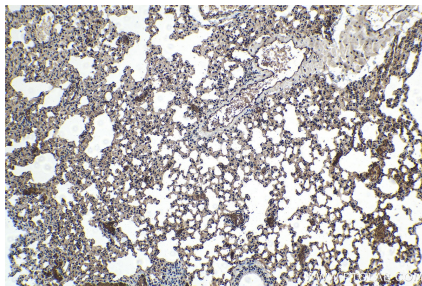
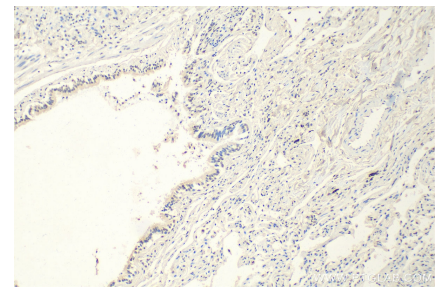
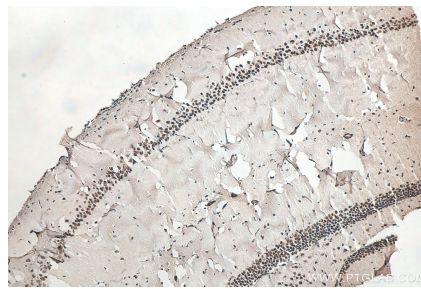
E: [proteintech@ptglab.com](mailto:proteintech@ptglab.com)  
W: [ptglab.com](http://ptglab.com)

This product is exclusively available under Proteintech Group brand and is not available to purchase from any other manufacturer.

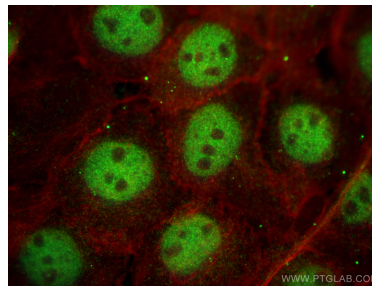
## Selected Validation Data



Various lysates were subjected to SDS PAGE followed by western blot with 66195-1-Ig (MTA2 antibody) at dilution of 1:10000 incubated at room temperature for 1.5 hours. This data was developed using the same antibody clone with 66195-1-PBS in a different storage buffer formulation.



Immunohistochemical analysis of paraffin-embedded mouse lung tissue slide using 66195-1-Ig (MTA2 antibody) at dilution of 1:4000 (under 10x lens). Heat mediated antigen retrieval with Tris-EDTA buffer (pH 9.0). This data was developed using the same antibody clone with 66195-1-PBS in a different storage buffer formulation.



Immunofluorescent analysis of (4% PFA) fixed A431 cells using MTA2 antibody (66195-1-Ig, Clone: 2G12G4) at dilution of 1:2000 and Multi-rAb Coralite® Plus 488-Goat Anti-Mouse Recombinant Secondary Antibody (H+L) (RGAM002), CL594-Phalloidin (red). This data was developed using the same antibody clone with 66195-1-PBS in a different storage buffer formulation.