

For Research Use Only

Bovine BSA Monoclonal antibody, PBS Only

Catalog Number: 66201-1-PBS



Basic Information

Catalog Number:

66201-1-PBS

Size:

100ug, Concentration: 1mg/ml by Nanodrop;

Source:

Mouse

Isotype:

IgG1

GenBank Accession Number:

GeneID (NCBI):

280717

Full Name:

bovine serum albumin

Observed MW:

67 kDa

Purification Method:

Protein A purification

CloneNo.:

2D11G3

Applications

Tested Applications:

WB, Indirect ELISA

Species Specificity:

bovine

Background Information

BSA, also named as ALB and Bovine Serum albumin, is the main protein of plasma. It has a good binding capacity for water, Ca²⁺, Na⁺, K⁺, fatty acids, hormones, bilirubin and drugs. Its main function is the regulation of the colloidal osmotic pressure of blood.

Storage

Storage:

Store at -80°C.

Storage Buffer:

PBS Only

For technical support and original validation data for this product please contact:

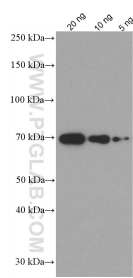
T: 1 (888) 4PTGLAB (1-888-478-4522) (toll free in USA), or 1(312) 455-8498 (outside USA)

E: proteintech@ptglab.com

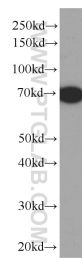
W: ptglab.com

This product is exclusively available under Proteintech Group brand and is not available to purchase from any other manufacturer.

Selected Validation Data



20ng, 10ng and 5ng BSA were subjected to SDS PAGE followed by western blot with 66201-1-Ig (BSA Antibody) at dilution of 1:10000 incubated at room temperature for 1.5 hours. This data was developed using the same antibody clone with 66201-1-PBS in a different storage buffer formulation.



Bovine serum were subjected to SDS PAGE followed by western blot with 66201-1-Ig (BSA Antibody) at dilution of 1:4000 incubated at room temperature for 1.5 hours. This data was developed using the same antibody clone with 66201-1-PBS in a different storage buffer formulation.