

For Research Use Only

SERPINE2 Monoclonal antibody

Catalog Number: 66203-1-Ig **3 Publications**



Basic Information

Catalog Number: 66203-1-Ig	GenBank Accession Number: BC015663	Purification Method: Protein G purification
Size: 150ul , Concentration: 1000 µg/ml by Nanodrop;	GeneID (NCBI): 5270	CloneNo.: 1E11F12
Source: Mouse	Full Name: serpin peptidase inhibitor, clade E (nexin, plasminogen activator inhibitor type 1), member 2	Recommended Dilutions: WB 1:5000-1:50000 IHC 1:50-1:500 IF 1:200-1:800
Isotype: IgG1	Calculated MW: 44 kDa	
Immunogen Catalog Number: AG1830	Observed MW: 44 kDa	

Applications

Tested Applications:

IF, IHC, WB, ELISA

Cited Applications:

IHC, WB

Species Specificity:

human, mouse, rat

Cited Species:

human, mouse

Note-IHC: suggested antigen retrieval with TE buffer pH 9.0; (*) Alternatively, antigen retrieval may be performed with citrate buffer pH 6.0

Positive Controls:

WB : hTERT-RPE1 cells, HEK-293 cells, C6 cells, Neuro-2a cells, U-87 MG cells, U-251 cells

IHC : human placenta tissue, human testis tissue

IF : HEK-293 cells,

Background Information

SERPINE2 also called protease nexin-1 or glial-derived neurite promoting factor, is a member of the serine protease inhibitor (SERPIN) superfamily. It would be a potent inhibitor of the urokinase-plasminogen activator (uPA), tissue-type PA (tPA), thrombin, trypsin, factor X_{ia}, and prostasin. SERPINE2 is widely expressed in various tissues, including endothelial cells, fibroblasts, smooth muscle cells, tumor cells, glial cells, neurons, and placental cells.

Notable Publications

Author	Pubmed ID	Journal	Application
Ying Yang	29556291	Oncol Lett	IHC
Xiyang Zhang	33363167	Front Cell Dev Biol	WB
Lu-Ning Qin	38164156	Theranostics	WB,IHC

Storage

Storage:

Store at -20°C. Stable for one year after shipment.

Storage Buffer:

PBS with 0.02% sodium azide and 50% glycerol pH 7.3.

Aliquoting is unnecessary for -20°C storage

***** 20ul sizes contain 0.1% BSA**

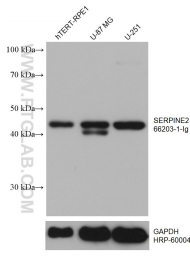
For technical support and original validation data for this product please contact:

T: 1 (888) 4PTGLAB (1-888-478-4522) (toll free in USA), or 1(312) 455-8498 (outside USA)

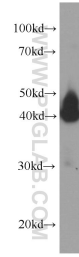
E: proteintech@ptglab.com
W: ptglab.com

This product is exclusively available under Proteintech Group brand and is not available to purchase from any other manufacturer.

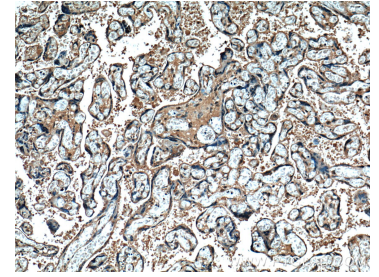
Selected Validation Data



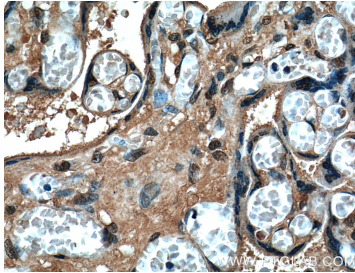
Various lysates were subjected to SDS PAGE followed by western blot with 66203-1-Ig (SERPINE2 antibody) at dilution of 1:10000 incubated at room temperature for 1.5 hours. The membrane was stripped and reblotted with HRP-conjugated GAPDH Monoclonal antibody (HRP-60004) as loading control.



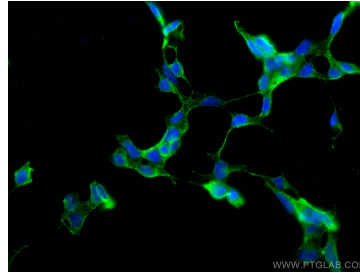
HEK-293 cells were subjected to SDS PAGE followed by western blot with 66203-1-Ig (SERPINE2 Antibody) at dilution of 1:2000 incubated at room temperature for 1.5 hours.



Immunohistochemical analysis of paraffin-embedded human placenta tissue slide using 66203-1-Ig (SERPINE2 Antibody) at dilution of 1:200 (under 10x lens).



Immunohistochemical analysis of paraffin-embedded human placenta tissue slide using 66203-1-Ig (SERPINE2 Antibody) at dilution of 1:200 (under 40x lens).



Immunofluorescent analysis of (4% PFA) fixed HEK-293 cells using SERPINE2 antibody (66203-1-Ig, Clone: 1E11F12) at dilution of 1:400 and Coralite® 488-Conjugated AffiniPure Goat Anti-Mouse IgG(H+L).