

For Research Use Only

# SERPINE2 Monoclonal antibody

Catalog Number: 66203-1-Ig **4 Publications**



## Basic Information

|                                                                |                                                                                                                    |                                                                                            |
|----------------------------------------------------------------|--------------------------------------------------------------------------------------------------------------------|--------------------------------------------------------------------------------------------|
| <b>Catalog Number:</b><br>66203-1-Ig                           | <b>GenBank Accession Number:</b><br>BC015663                                                                       | <b>Purification Method:</b><br>Protein G purification                                      |
| <b>Size:</b><br>150ul , Concentration: 1000 ug/ml by Nanodrop; | <b>GeneID (NCBI):</b><br>5270                                                                                      | <b>CloneNo.:</b><br>1E11F12                                                                |
| <b>Source:</b><br>Mouse                                        | <b>UNIPROT ID:</b><br>P07093                                                                                       | <b>Recommended Dilutions:</b><br>WB 1:5000-1:50000<br>IHC 1:50-1:500<br>IF/ICC 1:200-1:800 |
| <b>Isotype:</b><br>IgG1                                        | <b>Full Name:</b><br>serpin peptidase inhibitor, clade E (nexin, plasminogen activator inhibitor type 1), member 2 |                                                                                            |
| <b>Immunogen Catalog Number:</b><br>AG1830                     | <b>Calculated MW:</b><br>44 kDa                                                                                    |                                                                                            |
|                                                                | <b>Observed MW:</b><br>44 kDa                                                                                      |                                                                                            |

## Applications

|                                                                                                                                                      |                                                                                                                                                                                                                             |
|------------------------------------------------------------------------------------------------------------------------------------------------------|-----------------------------------------------------------------------------------------------------------------------------------------------------------------------------------------------------------------------------|
| <b>Tested Applications:</b><br>WB, IHC, IF/ICC, ELISA                                                                                                | <b>Positive Controls:</b><br><b>WB :</b> hTERT-RPE1 cells, HEK-293 cells, C6 cells, Neuro-2a cells, U-87 MG cells, U-251 cells<br><b>IHC :</b> human placenta tissue, human testis tissue<br><b>IF/ICC :</b> HEK-293 cells, |
| <b>Cited Applications:</b><br>WB, IHC                                                                                                                |                                                                                                                                                                                                                             |
| <b>Species Specificity:</b><br>human, mouse, rat                                                                                                     |                                                                                                                                                                                                                             |
| <b>Cited Species:</b><br>human, mouse                                                                                                                |                                                                                                                                                                                                                             |
| <b>Note-IHC: suggested antigen retrieval with TE buffer pH 9.0; (*) Alternatively, antigen retrieval may be performed with citrate buffer pH 6.0</b> |                                                                                                                                                                                                                             |

## Background Information

SERPINE2 also called protease nexin-1 or glial-derived neurite promoting factor, is a member of the serine protease inhibitor (SERPIN) superfamily. It would be a potent inhibitor of the urokinase-plasminogen activator (uPA), tissue-type PA (tPA), thrombin, trypsin, factor Xia, and prostasin. SERPINE2 is widely expressed in various tissues, including endothelial cells, fibroblasts, smooth muscle cells, tumor cells, glial cells, neurons, and placental cells.

## Notable Publications

| Author       | Pubmed ID | Journal             | Application |
|--------------|-----------|---------------------|-------------|
| Ying Yang    | 29556291  | Oncol Lett          | IHC         |
| Xiyang Zhang | 33363167  | Front Cell Dev Biol | WB          |
| Haishun Qu   | 38383657  | Sci Rep             | IHC         |

## Storage

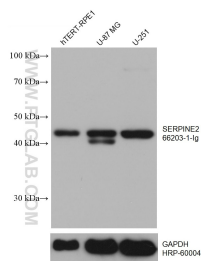
**Storage:**  
Store at -20°C. Stable for one year after shipment.  
**Storage Buffer:**  
PBS with 0.02% sodium azide and 50% glycerol pH 7.3.  
**Aliquoting is unnecessary for -20°C storage**

\*\*\* 20ul sizes contain 0.1% BSA

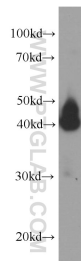
For technical support and original validation data for this product please contact:  
T: 1 (888) 4PTGLAB (1-888-478-4522) (toll free in USA), or 1(312) 455-8498 (outside USA)  
E: proteintech@ptglab.com  
W: ptglab.com

This product is exclusively available under Proteintech Group brand and is not available to purchase from any other manufacturer.

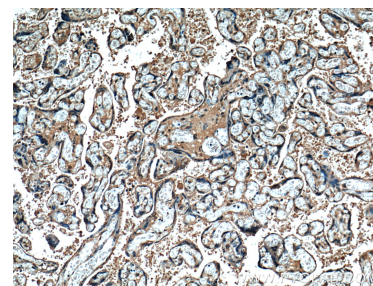
## Selected Validation Data



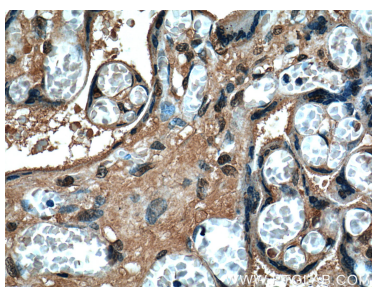
Various lysates were subjected to SDS PAGE followed by western blot with 66203-1-Ig (SERPINE2 antibody) at dilution of 1:10000 incubated at room temperature for 1.5 hours. The membrane was stripped and reblotted with HRP-conjugated GAPDH Monoclonal antibody (HRP-60004) as loading control.



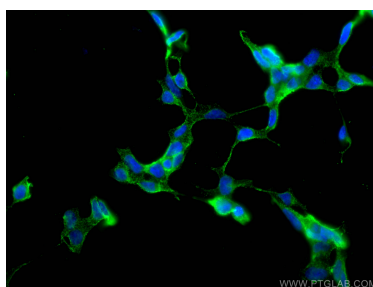
HEK-293 cells were subjected to SDS PAGE followed by western blot with 66203-1-Ig (SERPINE2 Antibody) at dilution of 1:2000 incubated at room temperature for 1.5 hours.



Immunohistochemical analysis of paraffin-embedded human placenta tissue slide using 66203-1-Ig (SERPINE2 Antibody) at dilution of 1:200 (under 10x lens).



Immunohistochemical analysis of paraffin-embedded human placenta tissue slide using 66203-1-Ig (SERPINE2 Antibody) at dilution of 1:200 (under 40x lens).



Immunofluorescent analysis of (4% PFA) fixed HEK-293 cells using SERPINE2 antibody (66203-1-Ig, Clone: 1E11F12) at dilution of 1:400 and Coralite® 488-Conjugated Goat Anti-Mouse IgG(H+L).