

For Research Use Only

# SERPINE2 Monoclonal antibody, PBS Only



Catalog Number: 66203-1-PBS

## Basic Information

<b>Catalog Number:</b> 66203-1-PBS	<b>GenBank Accession Number:</b> BC015663	<b>Purification Method:</b> Protein G purification
<b>Size:</b> 100ug , Concentration: 1mg/ml by Nanodrop;	<b>GeneID (NCBI):</b> 5270	<b>CloneNo.:</b> 1E11F12
<b>Source:</b> Mouse	<b>UNIPROT ID:</b> P07093	
<b>Isotype:</b> IgG1	<b>Full Name:</b> serpin peptidase inhibitor, clade E (nexin, plasminogen activator inhibitor type 1), member 2	
<b>Immunogen Catalog Number:</b> AG1830	<b>Calculated MW:</b> 44 kDa	
	<b>Observed MW:</b> 44 kDa	

## Applications

**Tested Applications:**  
WB, IF, IHC, Indirect ELISA

**Species Specificity:**  
human, mouse, rat

## Background Information

SERPINE2 also called protease nexin-1 or glial-derived neurite promoting factor, is a member of the serine protease inhibitor (SERPIN) superfamily. It would be a potent inhibitor of the urokinase-plasminogen activator (uPA), tissue-type PA (tPA), thrombin, trypsin, factor X<sub>II</sub>a, and prostasin. SERPINE2 is widely expressed in various tissues, including endothelial cells, fibroblasts, smooth muscle cells, tumor cells, glial cells, neurons, and placental cells.

## Storage

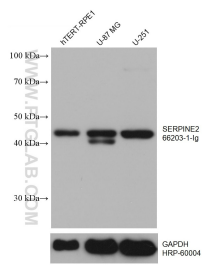
**Storage:**  
Store at -80°C.

**Storage Buffer:**  
PBS Only

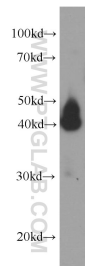
For technical support and original validation data for this product please contact:  
T: 1 (888) 4PTGLAB (1-888-478-4522) (toll free in USA), or 1(312) 455-8498 (outside USA)  
E: [proteintech@ptglab.com](mailto:proteintech@ptglab.com)  
W: [ptglab.com](http://ptglab.com)

This product is exclusively available under Proteintech Group brand and is not available to purchase from any other manufacturer.

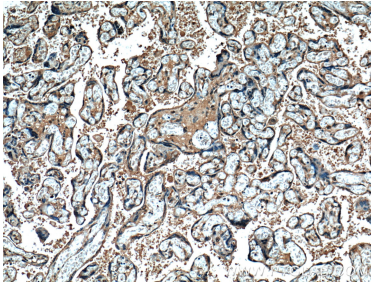
Selected Validation Data



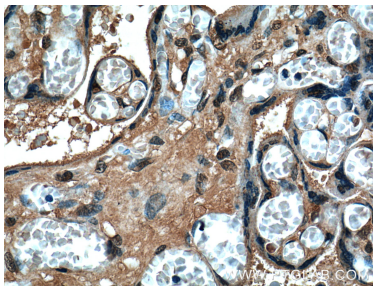
Various lysates were subjected to SDS PAGE followed by western blot with 66203-1-Ig (SERPINE2 antibody) at dilution of 1:10000 incubated at room temperature for 1.5 hours. The membrane was stripped and reblotted with HRP-conjugated GAPDH Monoclonal antibody (HRP-60004) as loading control. This data was developed using the same antibody clone with 66203-1-PBS in a different storage buffer formulation.



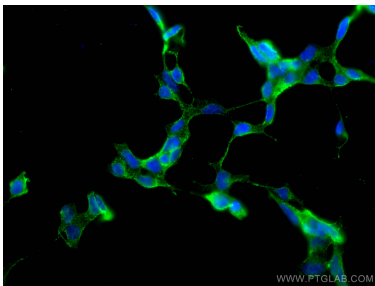
HEK-293 cells were subjected to SDS PAGE followed by western blot with 66203-1-Ig (SERPINE2 Antibody) at dilution of 1:2000 incubated at room temperature for 1.5 hours. This data was developed using the same antibody clone with 66203-1-PBS in a different storage buffer formulation.



Immunohistochemical analysis of paraffin-embedded human placenta tissue slide using 66203-1-Ig (SERPINE2 Antibody) at dilution of 1:200 (under 10x lens). This data was developed using the same antibody clone with 66203-1-PBS in a different storage buffer formulation.



Immunohistochemical analysis of paraffin-embedded human placenta tissue slide using 66203-1-Ig (SERPINE2 Antibody) at dilution of 1:200 (under 40x lens). This data was developed using the same antibody clone with 66203-1-PBS in a different storage buffer formulation.



Immunofluorescent analysis of (4% PFA) fixed HEK-293 cells using SERPINE2 antibody (66203-1-Ig, Clone: 1E11F12) at dilution of 1:400 and Coralite® 488-Conjugated AffiniPure Goat Anti-Mouse IgG(H+L). This data was developed using the same antibody clone with 66203-1-PBS in a different storage buffer formulation.