

For Research Use Only

Myoglobin Monoclonal antibody

Catalog Number: 66205-1-Ig **1 Publications**



Basic Information

Catalog Number: 66205-1-Ig	GenBank Accession Number: BC014547	Purification Method: Protein G purification
Size: 150ul , Concentration: 600 ug/ml by Nanodrop and 407 ug/ml by Bradford method using BSA as the standard;	GeneID (NCBI): 4151	CloneNo.: 1A4F7
Source: Mouse	UNIPROT ID: P02144	Recommended Dilutions: WB: 1:5000-1:80000 IHC: 1:50-1:500 FC (Intra): 0.40 ug per 10 ⁶ cells in a 100 µl suspension
Isotype: IgG1	Full Name: myoglobin	
Immunogen Catalog Number: AG8979	Calculated MW: 154 aa, 17 kDa Observed MW: 17-18 kDa	

Applications

Tested Applications: WB, IHC, FC (Intra), ELISA	Positive Controls: WB : human skeletal muscle tissue, pig heart tissue, rat heart tissue, mouse heart tissue, rabbit heart tissue, human heart tissue IHC : human heart tissue, mouse tongue tissue, rat heart tissue FC (Intra) : C2C12 cells,
Cited Applications: WB	
Species Specificity: human, mouse, rat, pig, rabbit	
Cited Species: pig	
Note-IHC: suggested antigen retrieval with TE buffer pH 9.0; (*) Alternatively, antigen retrieval may be performed with citrate buffer pH 6.0	

Background Information

Myoglobin is a cytoplasmic hemoprotein that is expressed primarily in cardiomyocytes and oxidative skeletal muscle fibers, functioning on facilitating oxygen transport and modulating nitric oxide homeostasis within cardiac and skeletal myocytes. Recent studies indicated that myoglobin was also expressed in non-muscle tissues. This antibody well recognized endogenous myoglobin in muscle lysates.

Notable Publications

Author	Pubmed ID	Journal	Application
Zhaojian Li	39276279	Stress Biol	WB

Storage

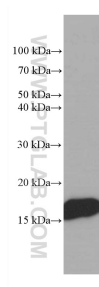
Storage:
Store at -20°C. Stable for one year after shipment.
Storage Buffer:
PBS with 0.02% sodium azide and 50% glycerol, pH7.3
Aliquoting is unnecessary for -20°C storage

*** 20ul sizes contain 0.1% BSA

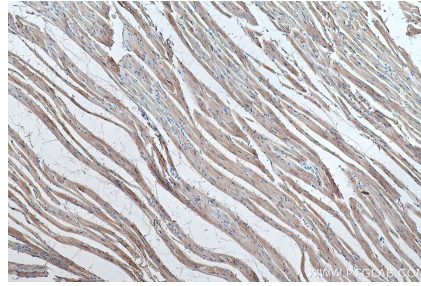
For technical support and original validation data for this product please contact:
T: 1 (888) 4PTGLAB (1-888-478-4522) (toll free in USA), or 1(312) 455-8498 (outside USA)
E: proteintech@ptglab.com
W: ptglab.com

This product is exclusively available under Proteintech Group brand and is not available to purchase from any other manufacturer.

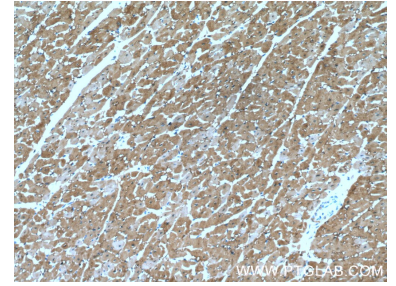
Selected Validation Data



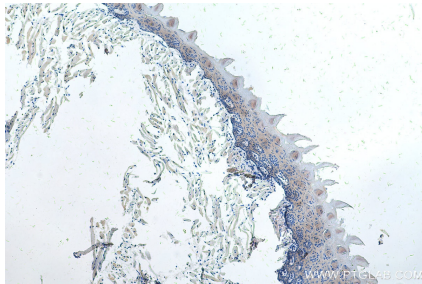
human skeletal muscle tissue were subjected to SDS PAGE followed by western blot with 66205-1-Ig (Myoglobin antibody at dilution of 1:50000 incubated at room temperature for 1.5 hours.



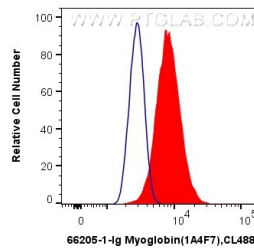
Immunohistochemical analysis of paraffin-embedded rat heart tissue slide using 66205-1-Ig (Myoglobin antibody) at dilution of 1:8000 (under 10x lens). Heat mediated antigen retrieval with Tris-EDTA buffer (pH 9.0).



Immunohistochemical analysis of paraffin-embedded human heart tissue slide using 66205-1-Ig (Myoglobin antibody at dilution of 1:200 (under 10x lens).



Immunohistochemical analysis of paraffin-embedded mouse tongue tissue slide using 66205-1-Ig (Myoglobin antibody) at dilution of 1:8000 (under 10x lens). Heat mediated antigen retrieval with Tris-EDTA buffer (pH 9.0).



1X10⁶ C2C12 cells were intracellularly stained with 0.4 ug Anti-Human Myoglobin (66205-1-Ig, Clone:1A4F7) and CoraLite®488-Conjugated AffiniPure Goat Anti-Mouse IgG(H+L) at dilution 1:1000 (red), or 0.4 ug Control Antibody. Cells were fixed with 4% PFA and permeabilized with Flow Cytometry Perm Buffer (PF00011-C).