

For Research Use Only

Apolipoprotein AI Monoclonal antibody



Catalog Number: 66206-1-Ig **4 Publications**

Basic Information

Catalog Number: 66206-1-Ig	GenBank Accession Number: BC005380	Purification Method: Protein A purification
Size: 150ul , Concentration: 1067 µg/ml by Bradford method using BSA as the standard;	GeneID (NCBI): 335	CloneNo.: 1C9G5
Source: Mouse	Full Name: apolipoprotein A-I	Recommended Dilutions: WB 1:1000-1:4000 IHC 1:50-1:500 IF 1:50-1:500
Isotype: IgG2b	Calculated MW: 31 kDa	
Immunogen Catalog Number: AG21920	Observed MW: 26-28 kDa	

Applications

Tested Applications: FC, IF, IHC, WB, ELISA	Positive Controls:
Cited Applications: WB	WB: human plasma tissue,
Species Specificity: human, mouse	IHC: human liver cancer tissue, mouse kidney tissue
Cited Species: human, mouse, rat	IF: HepG2 cells,
Note-IHC: suggested antigen retrieval with TE buffer pH 9.0; (*) Alternatively, antigen retrieval may be performed with citrate buffer pH 6.0	

Background Information

ApoA1 is a major protein component of high density lipoproteins (HDL) which is associated with reversed cholesterol transport, lipid/cholesterol binding, lecithin/cholesterol acyltransferase (LCAT) activation and specific receptors binding. It is synthesized in the liver and small intestine. Defects of ApoA1 cause low HDL level and systemic non-neuropathic amyloidosis. Serum concentration of ApoA1 is inversely related to the risk of developing atherosclerosis. This antibody was generated against the C-terminal region of human ApoA1.

Notable Publications

Author	Pubmed ID	Journal	Application
Hideaki Morishita	31526472	Elife	WB
Zhuona Rong	28512230	Mol Cell Proteomics	WB
Bingyang Liu	35660638	Peptides	WB

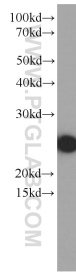
Storage

Storage:
Store at -20°C. Stable for one year after shipment.
Storage Buffer:
PBS with 0.02% sodium azide and 50% glycerol pH 7.3.
Aliquoting is unnecessary for -20°C storage

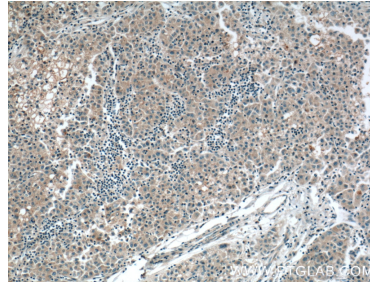
For technical support and original validation data for this product please contact:
T: 1 (888) 4PTGLAB (1-888-478-4522) (toll free in USA), or 1(312) 455-8498 (outside USA)
E: proteintech@ptglab.com
W: ptglab.com

This product is exclusively available under Proteintech Group brand and is not available to purchase from any other manufacturer.

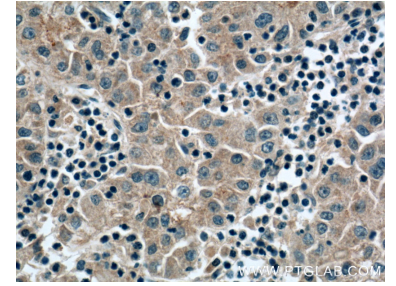
Selected Validation Data



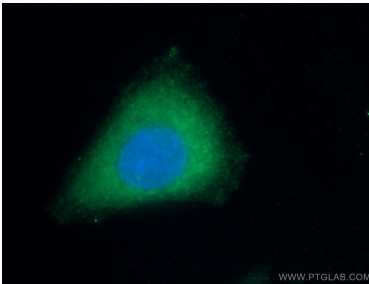
human plasma were subjected to SDS PAGE followed by western blot with 66206-1-Ig (APOA1 Antibody) at dilution of 1:2000 incubated at room temperature for 1.5 hours.



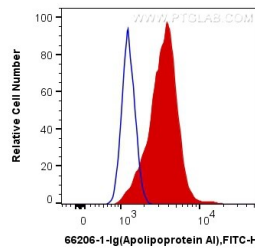
Immunohistochemical analysis of paraffin-embedded human liver cancer tissue slide using 66206-1-Ig (APOA1 Antibody) at dilution of 1:400 (under 10x lens). Heat mediated antigen retrieval with Tris-EDTA buffer (pH 9.0).



Immunohistochemical analysis of paraffin-embedded human liver cancer tissue slide using 66206-1-Ig (APOA1 Antibody) at dilution of 1:400 (under 40x lens). Heat mediated antigen retrieval with Tris-EDTA buffer (pH 9.0).



Immunofluorescent analysis of (-20°C Ethanol) fixed HepG2 cells using 66206-1-Ig (APOA1 antibody) at dilution of 1:100 and Alexa Fluor 488-conjugated AffiniPure Goat Anti-Mouse IgG(H+L).



1X10⁶ HepG2 cells were intracellularly stained with 0.4 ug Anti-Human Apolipoprotein AI (66206-1-Ig, Clone:1C9G5) and Coralite®488-Conjugated AffiniPure Goat Anti-Mouse IgG(H+L) at dilution 1:1000 (red), or 0.4 ug Control Antibody. Cells were fixed with 4% PFA and permeabilized with Flow Cytometry Perm Buffer (PF00011-C).