

For Research Use Only

# TLE1 Monoclonal antibody

Catalog Number: 66216-1-Ig

Featured Product



## Basic Information

Catalog Number:

66216-1-Ig

Size:

150ul, Concentration: 3764 ug/ml by Nanodrop and 1047 ug/ml by Bradford method using BSA as the standard;

Source:

Mouse

Isotype:

IgG2b

Immunogen Catalog Number:

AG21327

GenBank Accession Number:

BC010100

GeneID (NCBI):

7088

UNIPROT ID:

Q04724

Full Name:

transducin-like enhancer of split 1 (E(sp1) homolog, Drosophila)

Calculated MW:

83 kDa

Observed MW:

85-95 kDa

Purification Method:

Protein A purification

CloneNo.:

2F2H11

Recommended Dilutions:

WB 1:500-1:2000

IHC 1:50-1:500

IF/ICC 1:500-1:2000

## Applications

Tested Applications:

WB, IHC, IF/ICC, ELISA

Species Specificity:

human

**Note-IHC: suggested antigen retrieval with TE buffer pH 9.0; (\*) Alternatively, antigen retrieval may be performed with citrate buffer pH 6.0**

Positive Controls:

WB: Jurkat cells, HEK-293 cells

IHC: human gliomas tissue, human tonsillitis tissue

IF/ICC: SH-SY5Y cells,

## Background Information

TLE1 (Transducin-like enhancer protein 1) is a transcriptional corepressor and binds to a number of transcription factors. It can inhibit NF-kappa-B-regulated gene expression and the transcriptional activation mediated by FOXA2, and by CTNNB1 and TCF family members in Wnt signaling. The effects of full-length TLE family members may be modulated by association with dominant-negative AES (PMID: 10660609). TLE1 is highly expressed in postnatal brain (PMID: 29758293; 27852056).

## Storage

Storage:

Store at -20°C. Stable for one year after shipment.

Storage Buffer:

PBS with 0.02% sodium azide and 50% glycerol pH 7.3.

Aliquoting is unnecessary for -20°C storage

\*\*\* 20ul sizes contain 0.1% BSA

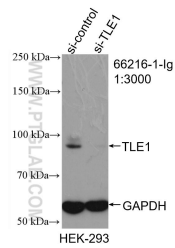
For technical support and original validation data for this product please contact:

T: 1 (888) 4PTGLAB (1-888-478-4522) (toll free in USA), or 1(312) 455-8498 (outside USA)

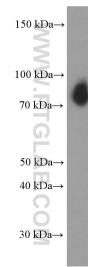
E: [proteintech@ptglab.com](mailto:proteintech@ptglab.com)  
W: [ptglab.com](http://ptglab.com)

This product is exclusively available under Proteintech Group brand and is not available to purchase from any other manufacturer.

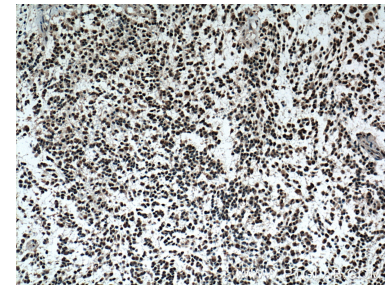
## Selected Validation Data



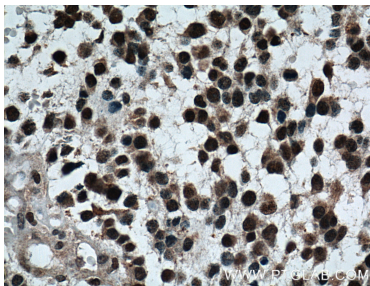
WB result of TLE1 antibody (66216-1-Ig; 1:3000; incubated at room temperature for 1.5 hours) with sh-Control and sh-TLE1 transfected HEK-293 cells.



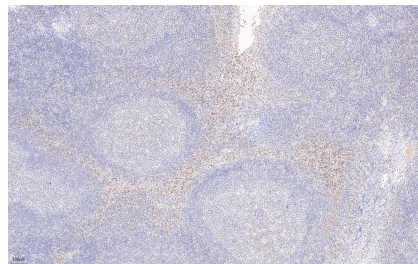
Jurkat cells were subjected to SDS PAGE followed by western blot with 66216-1-Ig (TLE1 Antibody) at dilution of 1:1000 incubated at room temperature for 1.5 hours.



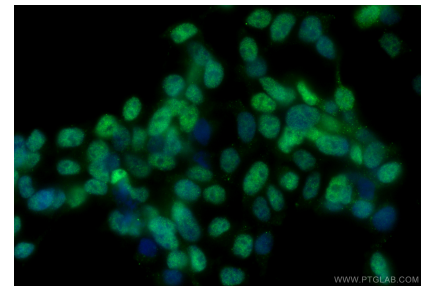
Immunohistochemical analysis of paraffin-embedded human gliomas tissue slide using 66216-1-Ig (TLE1 Antibody) at dilution of 1:200 (under 10x lens). Heat mediated antigen retrieval with Tris-EDTA buffer (pH 9.0).



Immunohistochemical analysis of paraffin-embedded human gliomas tissue slide using 66216-1-Ig (TLE1 Antibody) at dilution of 1:200 (under 40x lens). Heat mediated antigen retrieval with Tris-EDTA buffer (pH 9.0).



Immunohistochemical analysis of paraffin-embedded human tonsillitis tissue slide using 66216-1-Ig (TLE1 antibody) at dilution of 1:5000 (under 10x lens). Heat mediated antigen retrieval with Tris-EDTA buffer (pH 9.0).



Immunofluorescent analysis of (4% PFA) fixed SH-SY5Y cells using TLE1 antibody (66216-1-Ig, Clone: 2F2H11) at dilution of 1:700 and CoraLite®488-Conjugated Goat Anti-Mouse IgG(H+L) (SA00013-1).