

For Research Use Only

EEA1 Monoclonal antibody

Catalog Number: 66218-1-Ig **6 Publications**



Basic Information

Catalog Number: 66218-1-Ig	GenBank Accession Number: NM_003566	Purification Method: Thiophilic affinity chromatograph
Size: 150ul , Concentration: 780 µg/ml by Bradford method using BSA as the standard;	GeneID (NCBI): 8411	CloneNo.: 1G8B2
Source: Mouse	UNIPROT ID: Q15075	Recommended Dilutions: IF/ICC 1:20-1:200
Isotype: IgM	Full Name: early endosome antigen 1	
	Calculated MW: 162 kDa	

Applications

Tested Applications: IF, ELISA	Positive Controls: IF/ICC : HeLa cells,
Cited Applications: WB, IF	
Species Specificity: human	
Cited Species: human	

Background Information

Early endosome antigen 1 (EEA1) is a marker of early endosomes and has an important role in endosomal trafficking. EEA1 contains coiled-coil regions and an FYVE-type zinc finger which interacts with phosphatidylinositol-3-phosphate. EEA1 functions as a Rab5 effector, mediates endosome docking and, together with SNAREs, leads to membrane fusion.

Notable Publications

Author	Pubmed ID	Journal	Application
Lin Wang	32550897	Theranostics	IF
Yingcheng Zheng	31969431	J Virol	WB
Anbo Gao	35487252	Eur J Pharmacol	

Storage

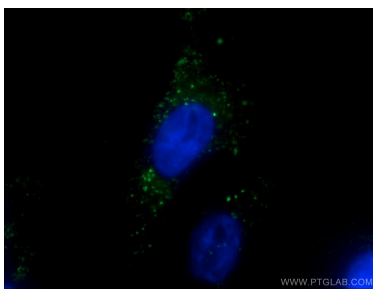
Storage:
Store at -20°C. Stable for one year after shipment.
Storage Buffer:
PBS with 0.02% sodium azide and 50% glycerol pH 7.3.
Aliquoting is unnecessary for -20°C storage

***** 20ul sizes contain 0.1% BSA**

For technical support and original validation data for this product please contact:
T: 1 (888) 4PTGLAB (1-888-478-4522) (toll free in USA), or 1(312) 455-8498 (outside USA)
E: proteintech@ptglab.com
W: ptglab.com

This product is exclusively available under Proteintech Group brand and is not available to purchase from any other manufacturer.

Selected Validation Data



Immunofluorescent analysis of (-20°C Acetone) fixed HeLa cells using 66218-1-Ig (EEA1 antibody) at dilution of 1:50 and Alexa Fluor 488-Conjugated Goat Anti-Mouse IgG(H+L).