

For Research Use Only

Alpha E-Catenin Monoclonal antibody

Catalog Number: 66221-1-Ig **3 Publications**



Basic Information

| | | |
|---|---|---|
| Catalog Number: 66221-1-Ig | GenBank Accession Number: BC031262 | Purification Method: Protein A purification |
| Size: 150ul , Concentration: 2080 ug/ml by Bradford method using BSA as the standard; | GeneID (NCBI): 1495 | CloneNo.: 2B7B8 |
| Source: Mouse | UNIPROT ID: P35221 | Recommended Dilutions: WB 1:500-1:2000 IHC 1:50-1:1000 |
| Isotype: IgG1 | Full Name: catenin (cadherin-associated protein), alpha 1, 102kDa | |
| Immunogen Catalog Number: AG23603 | Calculated MW: 906 aa, 100 kDa | |
| | Observed MW: 95-100 kDa | |

Applications

| | |
|--|--|
| Tested Applications: WB, IHC, FC (Intra), ELISA | Positive Controls: WB : NIH/3T3 cells, IHC : human stomach tissue, human colon tissue |
| Cited Applications: WB, IHC | |
| Species Specificity: human, mouse | |
| Cited Species: human, mouse | |
| Note-IHC: suggested antigen retrieval with TE buffer pH 9.0; (*) Alternatively, antigen retrieval may be performed with citrate buffer pH 6.0 | |

Background Information

Alpha catenin is an essential component of adherens junctions that connects E-cadherin- β -catenin complexes with the actin cytoskeleton. It also recruits a range of other important proteins to developing intercellular junctions. Three alpha catenins exist in human: alpha-E-catenin, alpha-N-catenin, and alpha-T-catenin, which share substantial amino-acid sequence similarity but have distinct tissue distribution. alpha-E-catenin is ubiquitously expressed, alpha-N-catenin is restricted to neuronal tissue, and alpha-T-catenin is primarily expressed in heart tissue. Reduced levels of alpha-E-catenin protein seem to be characteristic of many different human cancers, including malignant tumours of the breast, colon, stomach, oesophagus, bladder and liver. In addition, the loss of alpha-E-catenin often correlates with the degree of tumour differentiation and metastasis.

Notable Publications

| Author | Pubmed ID | Journal | Application |
|----------------|-----------|---------------|-------------|
| Xianhua Hu | 36367161 | Mol Med Rep | WB,IHC |
| Dan Sun | 27835600 | Oncotarget | WB |
| Chisato Sakuma | 35216185 | Int J Mol Sci | IHC |

Storage

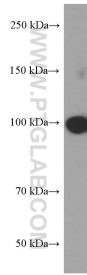
Storage:
Store at -20°C. Stable for one year after shipment.
Storage Buffer:
PBS with 0.02% sodium azide and 50% glycerol pH 7.3.
Aliquoting is unnecessary for -20°C storage

*** 20ul sizes contain 0.1% BSA

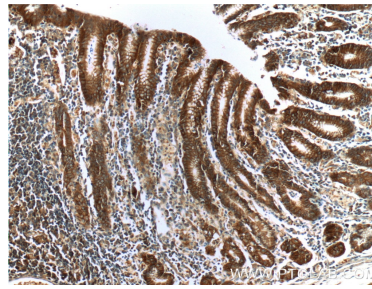
For technical support and original validation data for this product please contact:
T: 1 (888) 4PTGLAB (1-888-478-4522) (toll free in USA), or 1(312) 455-8498 (outside USA)
E: proteintech@ptglab.com
W: ptglab.com

This product is exclusively available under Proteintech Group brand and is not available to purchase from any other manufacturer.

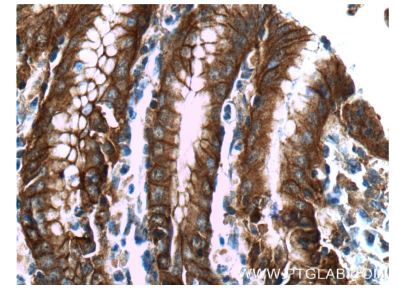
Selected Validation Data



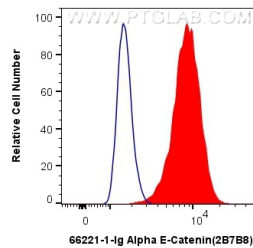
NIH/3T3 cells were subjected to SDS PAGE followed by western blot with 66221-1-Ig (Alpha E catenin antibody) at dilution of 1:1000 incubated at room temperature for 1.5 hours.



Immunohistochemical analysis of paraffin-embedded human stomach tissue slide using 66221-1-Ig (Alpha E catenin antibody at dilution of 1:200 (under 10x lens).



Immunohistochemical analysis of paraffin-embedded human stomach tissue slide using 66221-1-Ig (Alpha E catenin antibody at dilution of 1:200 (under 40x lens).



1X10⁶ MCF-7 cells were intracellularly stained with 0.4 ug Anti-Human Alpha E-Catenin (66221-1-Ig, Clone:2B7B8) and Coralite®488-Conjugated Goat Anti-Mouse IgG(H+L) at dilution 1:1000 (red), or 0.4 ug Mouse IgG1 Isotype Control (MOPC-21) (65124-1-Ig, Clone: MOPC-21) (blue). Cells were fixed with 4% PFA and permeabilized with Flow Cytometry Perm Buffer (PF00011-C).