

For Research Use Only

Alpha E-Catenin Monoclonal antibody

Catalog Number: 66221-1-Ig **3 Publications**



Basic Information

Catalog Number: 66221-1-Ig	GenBank Accession Number: BC031262	Purification Method: Protein G purification
Size: 150ul , Concentration: 2080 ug/ml by Bradford method using BSA as the standard;	GeneID (NCBI): 1495	CloneNo.: 2B7B8
Source: Mouse	UNIPROT ID: P35221	Recommended Dilutions: WB: 1:500-1:2000 IHC: 1:50-1:1000 FC (Intra): 0.40 ug per 10 ⁶ cells in a 100 µl suspension
Isotype: IgG1	Full Name: catenin (cadherin-associated protein), alpha 1, 102kDa	
Immunogen Catalog Number: AG23603	Calculated MW: 906 aa, 100 kDa	
	Observed MW: 95-100 kDa	

Applications

Tested Applications: WB, IHC, FC (Intra), ELISA	Positive Controls: WB : NIH/3T3 cells, IHC : human stomach tissue, human colon tissue FC (Intra) : MCF-7 cells,
Cited Applications: WB, IHC	
Species Specificity: human, mouse	
Cited Species: human, mouse	
Note-IHC: suggested antigen retrieval with TE buffer pH 9.0; (*) Alternatively, antigen retrieval may be performed with citrate buffer pH 6.0	

Background Information

Alpha catenin is an essential component of adherens junctions that connects E-cadherin-β-catenin complexes with the actin cytoskeleton. It also recruits a range of other important proteins to developing intercellular junctions. Three alpha catenins exist in human: alpha-E-catenin, alpha-N-catenin, and alpha-T-catenin, which share substantial amino-acid sequence similarity but have distinct tissue distribution. alpha-E-catenin is ubiquitously expressed, alpha-N-catenin is restricted to neuronal tissue, and alpha-T-catenin is primarily expressed in heart tissue. Reduced levels of alpha-E-catenin protein seem to be characteristic of many different human cancers, including malignant tumours of the breast, colon, stomach, oesophagus, bladder and liver. In addition, the loss of alpha-E-catenin often correlates with the degree of tumour differentiation and metastasis.

Notable Publications

Author	Pubmed ID	Journal	Application
Xianhua Hu	36367161	Mol Med Rep	WB,IHC
Dan Sun	27835600	Oncotarget	WB
Chisato Sakuma	35216185	Int J Mol Sci	IHC

Storage

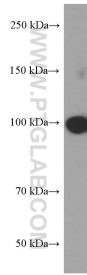
Storage:
Store at -20°C. Stable for one year after shipment.
Storage Buffer:
PBS with 0.02% sodium azide and 50% glycerol, pH7.3
Aliquoting is unnecessary for -20°C storage

*** 20ul sizes contain 0.1% BSA

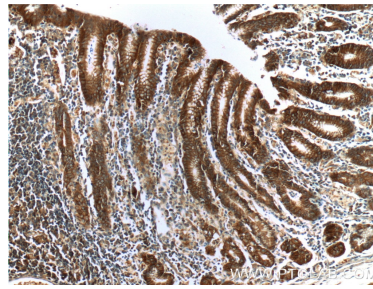
For technical support and original validation data for this product please contact:
T: 1 (888) 4PTGLAB (1-888-478-4522) (toll free in USA), or 1(312) 455-8498 (outside USA)
E: proteintech@ptglab.com
W: ptglab.com

This product is exclusively available under Proteintech Group brand and is not available to purchase from any other manufacturer.

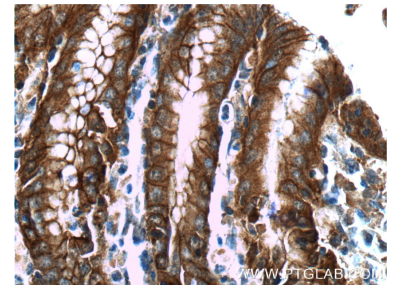
Selected Validation Data



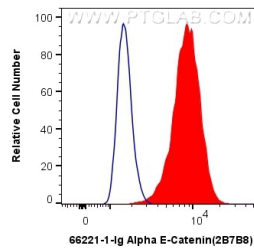
NIH/3T3 cells were subjected to SDS PAGE followed by western blot with 66221-1-Ig (Alpha E catenin antibody) at dilution of 1:1000 incubated at room temperature for 1.5 hours.



Immunohistochemical analysis of paraffin-embedded human stomach tissue slide using 66221-1-Ig (Alpha E catenin antibody at dilution of 1:200 (under 10x lens).



Immunohistochemical analysis of paraffin-embedded human stomach tissue slide using 66221-1-Ig (Alpha E catenin antibody at dilution of 1:200 (under 40x lens).



1X10⁶ MCF-7 cells were intracellularly stained with 0.4 ug Anti-Human Alpha E-Catenin (66221-1-Ig, Clone:2B7B8) and Coralite®488-Conjugated AffiniPure Goat Anti-Mouse IgG(H+L) at dilution 1:1000 (red), or 0.4 ug Mouse IgG1 Isotype Control (MOPC-21) (65124-1-Ig, Clone: MOPC-21) (blue). Cells were fixed with 4% PFA and permeabilized with Flow Cytometry Perm Buffer (PF00011-C).