

For Research Use Only

CHD4 Monoclonal antibody, PBS Only



Catalog Number: 66222-1-PBS

Featured Product

Basic Information

Catalog Number:

66222-1-PBS

Size:

100ug, Concentration: 1 mg/ml by Nanodrop;

Source:

Mouse

Isotype:

IgG1

Immunogen Catalog Number:

AG5729

GenBank Accession Number:

BC038596

GeneID (NCBI):

1108

UNIPROT ID:

Q14839

Full Name:

chromodomain helicase DNA binding protein 4

Calculated MW:

1937 aa, 221 kDa

Observed MW:

260 kDa

Purification Method:

Protein G purification

CloneNo.:

3D9G2

Applications

Tested Applications:

WB, IF, IHC, Indirect ELISA

Species Specificity:

human, mouse, rat

Background Information

Chromodomain helicase DNA-binding protein 4 (CHD4) is an ATP dependent chromatin remodeler and a major subunit of the repressive NuRD complex [PMID:9790534]. This complex plays key roles in transcriptional regulation and reorganization and maintenance of chromatin structure, as it targets pericentromeric heterochromatin and has recently been implicated in DNA damage repair, being rapidly recruited to DNA double strand breaks [PMID:17694084]. CHD4 is a novel BRIT1 binding partner that regulates the HR repair process, which is a critical pathway of repairing DNA double strand breaks and plays an essential role in maintaining genomic integrity [PMID:22219182]. The calculated molecular weight of CHD4 is 218 kDa, but modified CHD4 is about 250-280 kDa.

Storage

Storage:

Store at -80°C.

Storage Buffer:

PBS Only

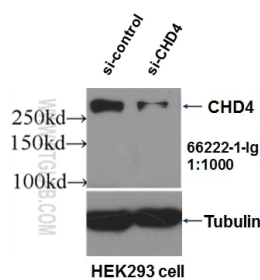
For technical support and original validation data for this product please contact:

T: 1 (888) 4PTGLAB (1-888-478-4522) (toll free in USA), or 1(312) 455-8498 (outside USA)

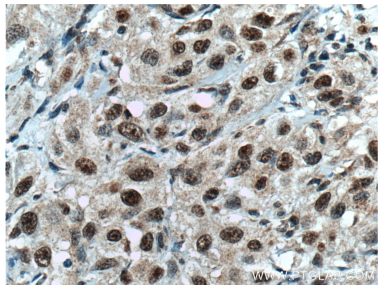
E: proteintech@ptglab.com
W: ptglab.com

This product is exclusively available under Proteintech Group brand and is not available to purchase from any other manufacturer.

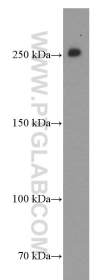
Selected Validation Data



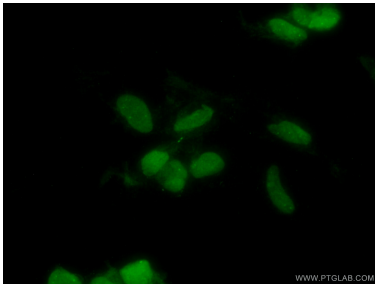
WB result of CHD4 antibody (66222-1-Ig, 1:1000) with si-Control and si-CHD4 transfected HEK293 cells. This data was developed using the same antibody clone with 66222-1-PBS in a different storage buffer formulation.



Immunohistochemical analysis of paraffin-embedded human cervical cancer tissue slide using 66222-1-Ig (CHD4 antibody) at dilution of 1:200 (under 40x lens. Heat mediated antigen retrieval with Tris-EDTA buffer (pH 9.0). This data was developed using the same antibody clone with 66222-1-PBS in a different storage buffer formulation.



MCF-7 cells were subjected to SDS PAGE followed by western blot with 66222-1-Ig (CHD4 Antibody) at dilution of 1:1000 incubated at room temperature for 1.5 hours. This data was developed using the same antibody clone with 66222-1-PBS in a different storage buffer formulation.



Immunofluorescent analysis of (10% Formaldehyde) fixed HEK-293 cells using 66222-1-Ig(CHD4 antibody) at dilution of 1:100 and Alexa Fluor 488-conjugated AffiniPure Goat Anti-Mouse IgG(H+L). This data was developed using the same antibody clone with 66222-1-PBS in a different storage buffer formulation.