

For Research Use Only

# MALT1 Monoclonal antibody

Catalog Number: 66225-1-Ig **2 Publications**



## Basic Information

<b>Catalog Number:</b> 66225-1-Ig	<b>GenBank Accession Number:</b> BC030143	<b>Purification Method:</b> Protein A purification
<b>Size:</b> 150ul , Concentration: 1800 ug/ml by Nanodrop and 960 ug/ml by Bradford method using BSA as the standard;	<b>GeneID (NCBI):</b> 10892	<b>CloneNo.:</b> 4D3F6
<b>Source:</b> Mouse	<b>UNIPROT ID:</b> Q9UDY8	<b>Recommended Dilutions:</b> WB 1:500-1:2000 IHC 1:50-1:500 IF/ICC 1:50-1:500
<b>Isotype:</b> IgG1	<b>Full Name:</b> mucosa associated lymphoid tissue lymphoma translocation gene 1	
<b>Immunogen Catalog Number:</b> AG20632	<b>Calculated MW:</b> 824 aa, 92 kDa	
	<b>Observed MW:</b> 92-100 kDa	

## Applications

<b>Tested Applications:</b> WB, IHC, IF/ICC, FC (Intra), ELISA	<b>Positive Controls:</b> WB : HeLa cells, Jurkat cells, K-562 cells
<b>Cited Applications:</b> IHC, ColP	<b>IHC :</b> human lymphoma tissue,
<b>Species Specificity:</b> human	<b>IF/ICC :</b> HeLa cells,
<b>Cited Species:</b> human, mouse	
<b>Note-IHC: suggested antigen retrieval with TE buffer pH 9.0; (*) Alternatively, antigen retrieval may be performed with citrate buffer pH 6.0</b>	

## Background Information

Mucosa-associated lymphoid tissue lymphoma translocation protein 1 belongs to caspase-like protein superfamily. MALT1 plays a potential role in the regulation of apoptosis and induces NFkB activation and required for the normal development of B cells and for the activation of the IKK complex. It acts as a caspase and mediates additional functions related to T cell activation, cleaving both the ubiquitin editing enzyme, TNFAIP3, and the C terminus of BCL10. It has two isoforms. Researches showed that inhibition of MALT1 blocks A20 and BCL10 cleavage, reduces NFkB activity, and decreases the expression of NFkB targets BCLXL.

## Notable Publications

Author	Pubmed ID	Journal	Application
Rui Qian	35309901	Front Cell Dev Biol	IHC
Yinghui Wang	38864940	Cell Biol Toxicol	IHC, ColP

## Storage

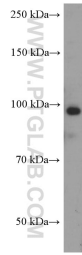
**Storage:**  
Store at -20°C. Stable for one year after shipment.  
**Storage Buffer:**  
PBS with 0.02% sodium azide and 50% glycerol pH 7.3.  
Aliquoting is unnecessary for -20°C storage

\*\*\* 20ul sizes contain 0.1% BSA

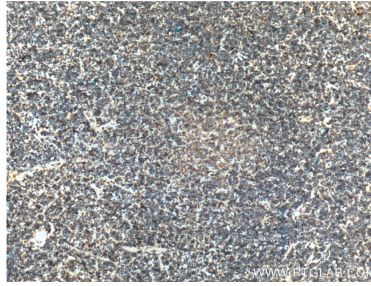
For technical support and original validation data for this product please contact:  
T: 1 (888) 4PTGLAB (1-888-478-4522) (toll free in USA), or 1(312) 455-8498 (outside USA)  
E: proteintech@ptglab.com  
W: ptglab.com

This product is exclusively available under Proteintech Group brand and is not available to purchase from any other manufacturer.

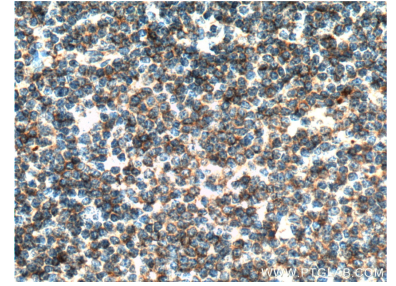
## Selected Validation Data



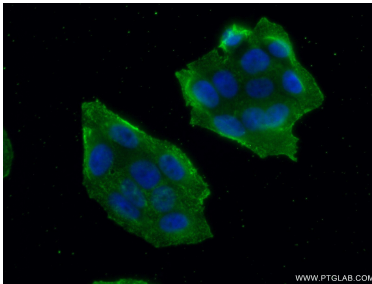
HeLa cells were subjected to SDS PAGE followed by western blot with 66225-1-Ig (MALT1 antibody) at dilution of 1:1000 incubated at room temperature for 1.5 hours.



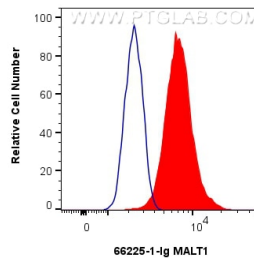
Immunohistochemical analysis of paraffin-embedded human lymphoma tissue slide using 66225-1-Ig (MALT1 Antibody) at dilution of 1:200 (under 10x lens). Heat mediated antigen retrieval with Tris-EDTA buffer (pH 9.0).



Immunohistochemical analysis of paraffin-embedded human lymphoma tissue slide using 66225-1-Ig (MALT1 Antibody) at dilution of 1:200 (under 40x lens). Heat mediated antigen retrieval with Tris-EDTA buffer (pH 9.0).



Immunofluorescent analysis of (10% Formaldehyde ) fixed HeLa cells using 66225-1-Ig(MALT1 antibody) at dilution of 1:100 and Alexa Fluor 488-conjugated AffiniPure Goat Anti-Mouse IgG(H+L).



1x10<sup>6</sup> HeLa cells were intracellularly stained with 0.25 ug MALT1 Monoclonal antibody (66225-1-Ig, Clone:4D3F6) and CoraLite®488-Conjugated Goat Anti-Mouse IgG(H+L) (SA00013-1)(red), or 0.25 ug Mouse IgG1 isotype control Mouse McAb (66360-1-Ig, Clone: 1F8D3) (blue). Cells were fixed with 4% PFA and permeabilized with Flow Cytometry Perm Buffer (PF00011-C).