

For Research Use Only

Haptoglobin Monoclonal antibody, PBS Only



Catalog Number: 66229-1-PBS

Basic Information

Catalog Number: 66229-1-PBS	GenBank Accession Number: BC058031	Purification Method: Protein A purification
Size: 100ug , Concentration: 1 mg/ml by Nanodrop;	GeneID (NCBI): 3240	CloneNo.: 3B4B9
Source: Mouse	UNIPROT ID: P00738	
Isotype: IgG2b	Full Name: haptoglobin	
Immunogen Catalog Number: AG9927	Calculated MW: 281aa,31 kDa; 228aa,25 kDa	
	Observed MW: 42 kDa	

Applications

Tested Applications:
WB, IHC, Indirect ELISA

Species Specificity:
human, pig

Background Information

HP(Haptoglobin) is also named as zonulin and belongs to the peptidase S1 family. HP, a plasma glycoprotein that binds free hemoglobin, has a tetrameric structure of 2 alpha(16 kDa and 9 kDa) and 2 beta(40 kDa) polypeptides that are covalently associated by disulfide bonds. In most species, apart from ruminants, Hp has a molecular mass of 100 kDa, consisting of two subunits of 40 kDa and two subunits of 9 kDa, although in a few species, such as man, genetic variant of Hp forms polymers of higher mass(PMID:2361363). Recent studies of haptoglobin show that certain oligosaccharide structures predominate in different diseases. For example, a highly-fucosylated structure is found in breast cancer and ovarian cancer, highly-sialylated structures in Crohn's disease and highly branched structures in alcoholic liver disease and fucosylated haptoglobin is a good serum marker for pancreatic cancer.(PMID:16385567).

Storage

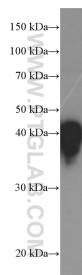
Storage:
Store at -80°C.

Storage Buffer:
PBS Only

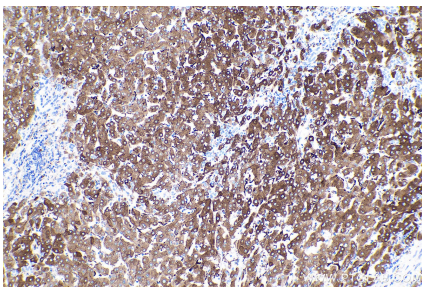
For technical support and original validation data for this product please contact:
T: 1 (888) 4PTGLAB (1-888-478-4522) (toll free in USA), or 1(312) 455-8498 (outside USA)
E: proteintech@ptglab.com
W: ptglab.com

This product is exclusively available under Proteintech Group brand and is not available to purchase from any other manufacturer.

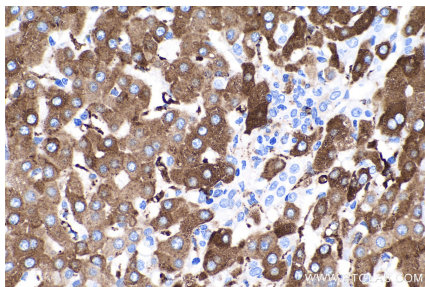
Selected Validation Data



0.5 µl human plasma was subjected to SDS PAGE followed by western blot with 66229-1-Ig (HP Antibody) at dilution of 1:40000 incubated at room temperature for 1.5 hours. This data was developed using the same antibody clone with 66229-1-PBS in a different storage buffer formulation.



Immunohistochemical analysis of paraffin-embedded human liver cancer tissue slide using 66229-1-Ig (Haptoglobin antibody) at dilution of 1:8000 (under 10x lens). Heat mediated antigen retrieval with Tris-EDTA buffer (pH 9.0). This data was developed using the same antibody clone with 66229-1-PBS in a different storage buffer formulation.



Immunohistochemical analysis of paraffin-embedded human liver cancer tissue slide using 66229-1-Ig (Haptoglobin antibody) at dilution of 1:8000 (under 40x lens). Heat mediated antigen retrieval with Tris-EDTA buffer (pH 9.0). This data was developed using the same antibody clone with 66229-1-PBS in a different storage buffer formulation.