

For Research Use Only

# Pikachurin Monoclonal antibody

Catalog Number: 66232-1-Ig



## Basic Information

<b>Catalog Number:</b> 66232-1-Ig	<b>GenBank Accession Number:</b> BC033177	<b>Purification Method:</b> Protein A purification
<b>Size:</b> 150ul , Concentration: 2800 µg/ml by Nanodrop and 2000 µg/ml by Bradford method using BSA as the standard;	<b>GeneID (NCBI):</b> 133584	<b>CloneNo.:</b> 1C6D12
<b>Source:</b> Mouse	<b>Full Name:</b> EGF-like, fibronectin type III and laminin G domains	<b>Recommended Dilutions:</b> WB 1:500-1:2000 IF 1:200-1:800
<b>Isotype:</b> IgG1	<b>Calculated MW:</b> 111 kDa	
<b>Immunogen Catalog Number:</b> AG6362	<b>Observed MW:</b> 111 kDa, 55-60 kDa	

## Applications

<b>Tested Applications:</b> IF, WB, ELISA	<b>Positive Controls:</b> WB : human retina tissue, PC-3 cells
<b>Species Specificity:</b> human	<b>IF :</b> Y79 cells,

## Background Information

Pikachurin, also known as EGFLAM or FLJ39155, is an extracellular matrix-like retinal protein that has been found to localize in the synaptic cleft of the photoreceptor ribbon synapse (PMID: 18641643). Pikachurin is a dystroglycan-interacting protein and has an essential role in photoreceptor ribbon synapse formation. Pikachurin is a 1017-amino-acid protein with a calculated molecular weight of 111 kDa and high mRNA abundance in retina. This monoclonal antibody detects two bands of 111 kDa and 55-60 kDa. The lower-molecular-weight band has been reported and likely represents a fragment resulting from cleavage of Pikachurin (PMID: 23226524).

## Storage

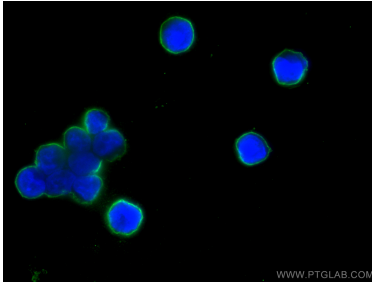
**Storage:**  
Store at -20°C. Stable for one year after shipment.  
**Storage Buffer:**  
PBS with 0.02% sodium azide and 50% glycerol pH 7.3.  
Aliquoting is unnecessary for -20°C storage

**\*\*\* 20ul sizes contain 0.1% BSA**

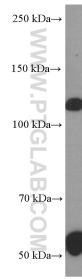
For technical support and original validation data for this product please contact:  
T: 1 (888) 4PTGLAB (1-888-478-4522) (toll free in USA), or 1(312) 455-8498 (outside USA)  
E: proteintech@ptglab.com  
W: ptglab.com

**This product is exclusively available under Proteintech Group brand and is not available to purchase from any other manufacturer.**

## Selected Validation Data



Immunofluorescent analysis of (4% PFA) fixed Y79 cells using Pikachurin antibody (66232-1-Ig, Clone: 1C6D12) at dilution of 1:400 and CoraLite®488-Conjugated AffiniPure Goat Anti-Mouse IgG(H+L).



human retina tissue were subjected to SDS PAGE followed by western blot with 66232-1-Ig (Pikachurin antibody at dilution of 1:1000 incubated at room temperature for 1.5 hours.