

For Research Use Only

Pikachurin Monoclonal antibody, PBS Only

Catalog Number: 66232-1-PBS



Basic Information

Catalog Number: 66232-1-PBS	GenBank Accession Number: BC033177	Purification Method: Protein A purification
Size: 100ug, Concentration: 1mg/ml by Nanodrop;	GeneID (NCBI): 133584	CloneNo.: 1C6D12
Source: Mouse	UNIPROT ID: Q63HQ2	
Isotype: IgG1	Full Name: EGF-like, fibronectin type III and laminin G domains	
Immunogen Catalog Number: AG6362	Calculated MW: 111 kDa	
	Observed MW: 111 kDa, 55-60 kDa	

Applications

Tested Applications:
WB, IF/ICC, IF-P, Indirect ELISA

Species Specificity:
human, mouse, rat

Background Information

Pikachurin, also known as EGFLAM or FLJ39155, is an extracellular matrix-like retinal protein that has been found to localize in the synaptic cleft of the photoreceptor ribbon synapse (PMID: 18641643). Pikachurin is a dystroglycan-interacting protein and has an essential role in photoreceptor ribbon synapse formation. Pikachurin is a 1017-amino-acid protein with a calculated molecular weight of 111 kDa and high mRNA abundance in retina. This monoclonal antibody detects two bands of 111 kDa and 55-60 kDa. The lower-molecular-weight band has been reported and likely represents a fragment resulting from cleavage of Pikachurin (PMID: 23226524).

Storage

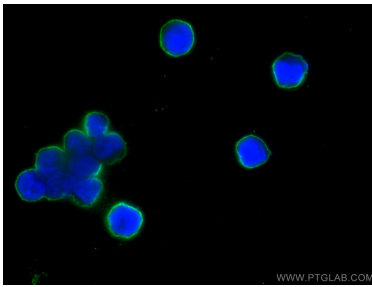
Storage:
Store at -80°C.

Storage Buffer:
PBS Only

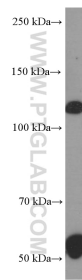
For technical support and original validation data for this product please contact:
T: 1 (888) 4PTGLAB (1-888-478-4522) (toll free in USA), or 1(312) 455-8498 (outside USA)
E: proteintech@ptglab.com
W: ptglab.com

This product is exclusively available under Proteintech Group brand and is not available to purchase from any other manufacturer.

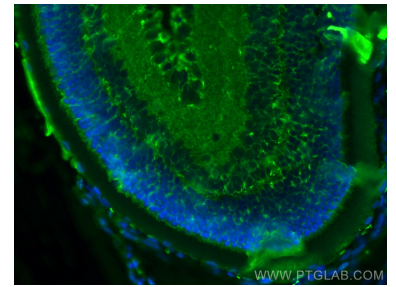
Selected Validation Data



Immunofluorescent analysis of (4% PFA) fixed Y79 cells using Pikachurin antibody (66232-1-Ig, Clone: 1C6D12) at dilution of 1:400 and CoraLite®488-Conjugated AffiniPure Goat Anti-Mouse IgG(H+L). This data was developed using the same antibody clone with 66232-1-PBS in a different storage buffer formulation.



human retina tissue were subjected to SDS PAGE followed by western blot with 66232-1-Ig (Pikachurin antibody at dilution of 1:1000 incubated at room temperature for 1.5 hours. This data was developed using the same antibody clone with 66232-1-PBS in a different storage buffer formulation.



Immunofluorescent analysis of (4% PFA) fixed paraffin-embedded rat eye tissue using Pikachurin antibody (66232-1-Ig, Clone: 1C6D12) at dilution of 1:400 and CoraLite®488-Conjugated Goat Anti-Mouse IgG(H+L) (SA00013-1). Heat mediated antigen retrieval with Tris-EDTA buffer (pH 9.0). This data was developed using the same antibody clone with 66232-1-PBS in a different storage buffer formulation.