

For Research Use Only

IL-33 Monoclonal antibody

Catalog Number: 66235-1-Ig **6 Publications**



Basic Information

Catalog Number: 66235-1-Ig	GenBank Accession Number: BC047085	Purification Method: Protein A purification
Size: 150ul , Concentration: 1500 µg/ml by Bradford method using BSA as the standard;	GeneID (NCBI): 90865	CloneNo.: 2A9C7
Source: Mouse	Full Name: interleukin 33	Recommended Dilutions: WB 1:1000-1:4000
Isotype: IgM	Calculated MW: 30 kDa	
Immunogen Catalog Number: AG21430	Observed MW: 35 kDa	

Applications

Tested Applications: WB, ELISA	Positive Controls: WB : THP-1 cells, hTERT-RPE1 cells, human lung tissue
Cited Applications: IF, IHC, WB	
Species Specificity: human	
Cited Species: human, mouse	

Background Information

IL-33 is an IL-1 family cytokine and nuclear alarmin, and is constitutively expressed in epithelial barrier tissues and human blood vessels. IL-33 is involved in the maturation of Th2 cells and the activation of mast cells, basophils, eosinophils and natural killer cells. It also acts as a chemoattractant for Th2 cells, and may function as an "alarmin", that amplifies immune responses during tissue injury.

Notable Publications

Author	Pubmed ID	Journal	Application
Chia-Jung Kuo	31640262	Cells	WB,IF
Jufang Jia	36362328	Int J Mol Sci	WB,IF
Elena Vianello	31316160	Sci Rep	WB,IHC

Storage

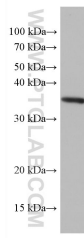
Storage:
Store at -20°C. Stable for one year after shipment.
Storage Buffer:
PBS with 0.02% sodium azide and 50% glycerol pH 7.3.
Aliquoting is unnecessary for -20°C storage

*** 20ul sizes contain 0.1% BSA

For technical support and original validation data for this product please contact:
T: 1 (888) 4PTGLAB (1-888-478-4522) (toll free in USA), or 1(312) 455-8498 (outside USA)
E: proteintech@ptglab.com
W: ptglab.com

This product is exclusively available under Proteintech Group brand and is not available to purchase from any other manufacturer.

Selected Validation Data



THP-1 cells were subjected to SDS PAGE followed by western blot with 66235-1-Ig (IL-33 antibody) at dilution of 1:2000 incubated at room temperature for 1.5 hours.