

For Research Use Only

# Mammaglobin A Monoclonal antibody

Catalog Number: 66237-1-Ig



## Basic Information

<b>Catalog Number:</b> 66237-1-Ig	<b>GenBank Accession Number:</b> BC128252	<b>Purification Method:</b> Protein G purification
<b>Size:</b> 150ul , Concentration: 1500 ug/ml by Nanodrop and 867 ug/ml by Bradford method using BSA as the standard;	<b>GeneID (NCBI):</b> 4250	<b>CloneNo.:</b> 2E5D4
<b>Source:</b> Mouse	<b>UNIPROT ID:</b> Q13296	<b>Recommended Dilutions:</b> IHC 1:100-1:400 IF-P 1:200-1:800
<b>Isotype:</b> IgG1	<b>Full Name:</b> secretoglobin, family 2A, member 2	
<b>Immunogen Catalog Number:</b> AG22485	<b>Calculated MW:</b> 93 aa, 10 kDa	

## Applications

<b>Tested Applications:</b> IHC, IF-P, ELISA	<b>Positive Controls:</b>
<b>Species Specificity:</b> human	<b>IHC :</b> human breast cancer tissue, <b>IF-P :</b> human breast cancer tissue,
<b>Note-IHC: suggested antigen retrieval with TE buffer pH 9.0; (*) Alternatively, antigen retrieval may be performed with citrate buffer pH 6.0</b>	

## Background Information

Mammaglobin A, also known as SCGB2A2, is a member of the secretoglobin superfamily. Mammaglobin A is a breast cancer-associated antigen almost exclusively over-expressed in primary and metastatic human breast cancers, making it a specific molecular marker and a potential therapeutic target for breast cancer. This monoclonal antibody is raised against full-length of 93-amino acid human mammaglobin A.

## Storage

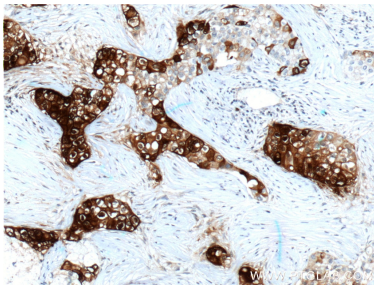
**Storage:**  
Store at -20°C. Stable for one year after shipment.  
**Storage Buffer:**  
PBS with 0.02% sodium azide and 50% glycerol pH 7.3.  
**Aliquoting is unnecessary for -20°C storage**

\*\*\* 20ul sizes contain 0.1% BSA

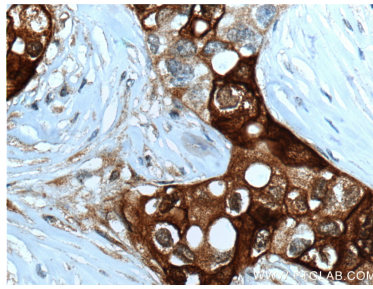
For technical support and original validation data for this product please contact:  
T: 1 (888) 4PTGLAB (1-888-478-4522) (toll free in USA), or 1(312) 455-8498 (outside USA)  
E: [proteintech@ptglab.com](mailto:proteintech@ptglab.com)  
W: [ptglab.com](http://ptglab.com)

This product is exclusively available under Proteintech Group brand and is not available to purchase from any other manufacturer.

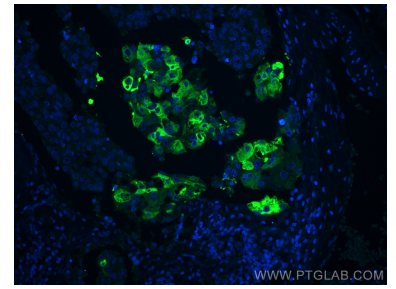
## Selected Validation Data



Immunohistochemical analysis of paraffin-embedded human breast cancer tissue slide using 66237-1-Ig (Mammaglobin A antibody at dilution of 1:200 (under 10x lens). Heat mediated antigen retrieval with Tris-EDTA buffer (pH 9.0).



Immunohistochemical analysis of paraffin-embedded human breast cancer tissue slide using 66237-1-Ig (Mammaglobin A antibody at dilution of 1:200 (under 40x lens). Heat mediated antigen retrieval with Tris-EDTA buffer (pH 9.0).



Immunofluorescent analysis of (4% PFA) fixed human breast cancer tissue using Mammaglobin A antibody (66237-1-Ig, Clone: 2E5D4) at dilution of 1:400 and CoraLite®488-Conjugated Goat Anti-Mouse IgG(H+L).