

C4 Gamma Chain Monoclonal antibody

Catalog Number: 66242-1-Ig

Basic Information

Catalog Number: 66242-1-Ig	GenBank Accession Number: BC012372	Purification Method: Protein G purification
Size: 150ul , Concentration: 1500 ug/ml by Nanodrop and 813 ug/ml by Bradford method using BSA as the standard;	GeneID (NCBI): 720	CloneNo.: 2G6A7
Source: Mouse	UNIPROT ID: POCOL4	Recommended Dilutions: WB 1:2000-1:16000 IHC 1:400-1:1600 IF-P 1:200-1:800
Isotype: IgG1	Full Name: complement component 4A (Rodgers blood group)	
Immunogen Catalog Number: AG10449	Calculated MW: 1744 aa, 193 kDa	
	Observed MW: 31 kDa	

Applications

Tested Applications: WB, IHC, IF-P, ELISA	Positive Controls:
Species Specificity: human, mouse	WB : human plasma tissue,
Note-IHC: suggested antigen retrieval with TE buffer pH 9.0; (*) Alternatively, antigen retrieval may be performed with citrate buffer pH 6.0	IHC : human liver tissue,
	IF-P : human liver tissue,

Background Information

Complement C4, a component of the classical complement pathway, has an important role in innate immune function. C4 protein is expressed as a single chain precursor which is proteolytically cleaved into a trimer of alpha, beta, and gamma chains (molecular weights 95, 78, and 31 kDa) prior to secretion. The alpha chain is cleaved to release C4 anaphylatoxin, an antimicrobial peptide and a mediator of local inflammation. This antibody raised against 1543-1744aa of human C4-A protein recognizes C4 gamma chain.

Storage

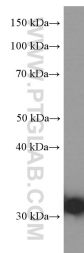
Storage:
Store at -20°C. Stable for one year after shipment.
Storage Buffer:
PBS with 0.02% sodium azide and 50% glycerol, pH7.3
Aliquoting is unnecessary for -20°C storage

*** 20ul sizes contain 0.1% BSA

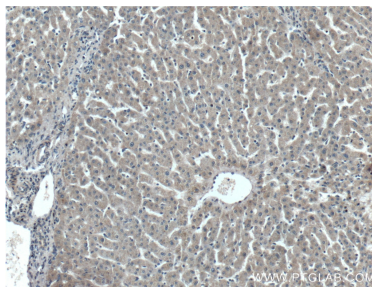
For technical support and original validation data for this product please contact:
T: 1 (888) 4PTGLAB (1-888-478-4522) (toll free in USA), or 1(312) 455-8498 (outside USA)
E: proteintech@ptglab.com
W: ptglab.com

This product is exclusively available under Proteintech Group brand and is not available to purchase from any other manufacturer.

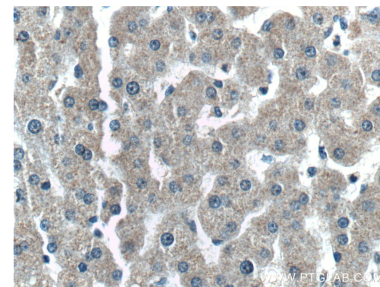
Selected Validation Data



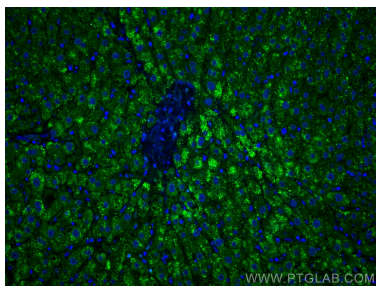
human plasma were subjected to SDS PAGE followed by western blot with 66242-1-Ig (C4 gamma chain antibody) at dilution of 1:8000 incubated at room temperature for 1.5 hours.



Immunohistochemical analysis of paraffin-embedded human liver tissue slide using 66242-1-Ig (C4 gamma chain antibody) at dilution of 1:800 (under 10x lens).



Immunohistochemical analysis of paraffin-embedded human liver tissue slide using 66242-1-Ig (C4 gamma chain antibody) at dilution of 1:800 (under 40x lens).



Immunofluorescent analysis of (4% PFA) fixed human liver tissue using C4 Gamma Chain antibody (66242-1-Ig, Clone: 2G6A7) at dilution of 1:400 and CoraLite®488-Conjugated AffiniPure Goat Anti-Mouse IgG(H+L).