

For Research Use Only

C4 Gamma Chain Monoclonal antibody, PBS Only

Catalog Number: 66242-1-PBS



Basic Information

Catalog Number: 66242-1-PBS	GenBank Accession Number: BC012372	Purification Method: Protein A purification
Size: 100ug , Concentration: 1000 µg/ml by 720 Nanodrop;	GeneID (NCBI): UNIPROT ID: POCOL4	CloneNo.: 2G6A7
Source: Mouse	Full Name: complement component 4A (Rodgers blood group)	
Isotype: IgG1	Calculated MW: 1744 aa, 193 kDa	
Immunogen Catalog Number: AG10449	Observed MW: 31 kDa	

Applications

Tested Applications:
WB, IHC, IF-P, Indirect ELISA

Species Specificity:
human, mouse

Background Information

Complement C4, a component of the classical complement pathway, has an important role in innate immune function. C4 protein is expressed as a single chain precursor which is proteolytically cleaved into a trimer of alpha, beta, and gamma chains (molecular weights 95, 78, and 31 kDa) prior to secretion. The alpha chain is cleaved to release C4 anaphylatoxin, an antimicrobial peptide and a mediator of local inflammation. This antibody raised against 1543-1744aa of human C4-A protein recognizes C4 gamma chain.

Storage

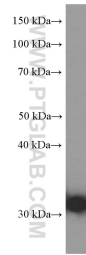
Storage:
Store at -80°C.

Storage Buffer:
PBS Only

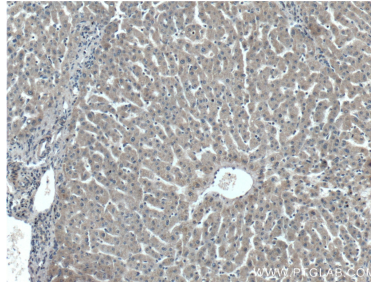
For technical support and original validation data for this product please contact:
T: 1 (888) 4PTGLAB (1-888-478-4522) (toll free in USA), or 1(312) 455-8498 (outside USA)
E: proteintech@ptglab.com
W: ptglab.com

This product is exclusively available under Proteintech Group brand and is not available to purchase from any other manufacturer.

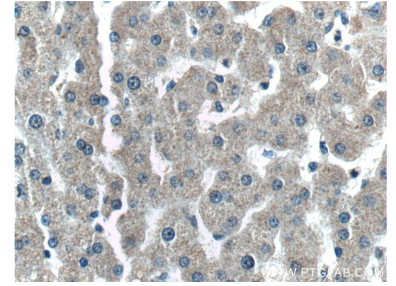
Selected Validation Data



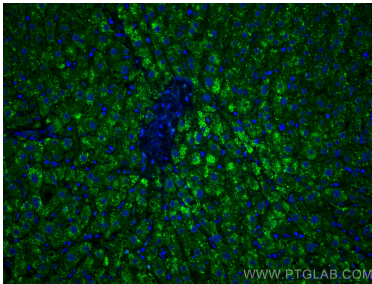
human plasma were subjected to SDS PAGE followed by western blot with 66242-1-Ig (C4 gamma chain antibody) at dilution of 1:8000 incubated at room temperature for 1.5 hours. This data was developed using the same antibody clone with 66242-1-PBS in a different storage buffer formulation.



Immunohistochemical analysis of paraffin-embedded human liver tissue slide using 66242-1-Ig (C4 gamma chain antibody) at dilution of 1:800 (under 10x lens). This data was developed using the same antibody clone with 66242-1-PBS in a different storage buffer formulation.



Immunohistochemical analysis of paraffin-embedded human liver tissue slide using 66242-1-Ig (C4 gamma chain antibody) at dilution of 1:800 (under 40x lens). This data was developed using the same antibody clone with 66242-1-PBS in a different storage buffer formulation.



Immunofluorescent analysis of (4% PFA) fixed human liver tissue using C4 Gamma Chain antibody (66242-1-Ig, Clone: 2G6A7) at dilution of 1:400 and CoraLite®488-Conjugated AffiniPure Goat Anti-Mouse IgG(H+L). This data was developed using the same antibody clone with 66242-1-PBS in a different storage buffer formulation.