

For Research Use Only

# Annexin V Monoclonal antibody

Catalog Number: 66245-1-Ig

Featured Product

1 Publications



## Basic Information

Catalog Number:

66245-1-Ig

Size:

150ul, Concentration: 1400 ug/ml by Nanodrop and 933 ug/ml by Bradford method using BSA as the standard;

Source:

Mouse

Isotype:

IgG1

Immunogen Catalog Number:

AG1538

GenBank Accession Number:

BC001429

GeneID (NCBI):

308

UNIPROT ID:

P08758

Full Name:

annexin A5

Calculated MW:

36 kDa

Observed MW:

36 kDa

Purification Method:

Protein G purification

CloneNo.:

1E6A8

Recommended Dilutions:

WB 1:5000-1:50000

IHC 1:50-1:500

IF/ICC 1:400-1:1600

## Applications

Tested Applications:

WB, IHC, IF/ICC, FC (Intra), ELISA

Cited Applications:

IF

Species Specificity:

human, mouse, pig

Cited Species:

human

**Note-IHC: suggested antigen retrieval with TE buffer pH 9.0; (\*) Alternatively, antigen retrieval may be performed with citrate buffer pH 6.0**

Positive Controls:

**WB** : MG-63 cells, HEK-293 cells, HeLa cells, human urine exosomes tissue, mouse brain tissue, Raw 264.7 cells, NIH/3T3 cells, K-562 cells, HepG2 cells, U-87 MG cells, MDA-MB-231 cells, pig brain tissue

**IHC** : human malignant melanoma tissue, human colon tissue, human spleen tissue

**IF/ICC** : HeLa cells,

## Background Information

Annexin A5 (ANXA5), is a member of the structurally related family of annexin proteins some of which have been implicated in membrane-related events along exocytotic and endocytotic pathways. Annexin 5 is a phospholipase A2 and protein kinase C inhibitory protein with calcium channel activity and a potential role in cellular signal transduction, inflammation, growth and differentiation. Annexin 5 has also been described as placental anticoagulant protein I, vascular anticoagulant-alpha, endonexin II, lipocortin V, placental protein 4 and anchorin CII.

## Notable Publications

Author	Pubmed ID	Journal	Application
Zahrasadat Navaeiseddighi	38060620	PLoS Pathog	IF

## Storage

Storage:

Store at -20°C. Stable for one year after shipment.

Storage Buffer:

PBS with 0.02% sodium azide and 50% glycerol, pH7.3

Aliquoting is unnecessary for -20°C storage

\*\*\* 20ul sizes contain 0.1% BSA

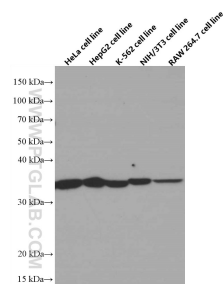
For technical support and original validation data for this product please contact:

T: 1 (888) 4PTGLAB (1-888-478-4522) (toll free in USA), or 1(312) 455-8498 (outside USA)

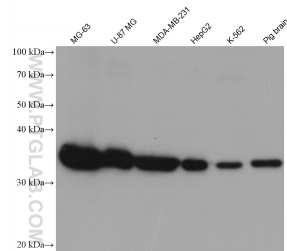
E: [proteintech@ptglab.com](mailto:proteintech@ptglab.com)  
W: [ptglab.com](http://ptglab.com)

This product is exclusively available under Proteintech Group brand and is not available to purchase from any other manufacturer.

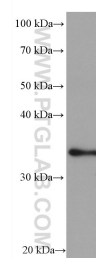
## Selected Validation Data



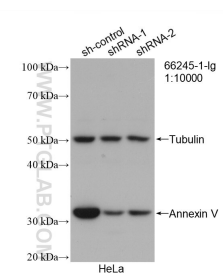
Various cells were subjected to SDS PAGE followed by western blot with 66245-1-Ig (Annexin V antibody) at dilution of 1:13000 incubated at room temperature for 1.5 hours.



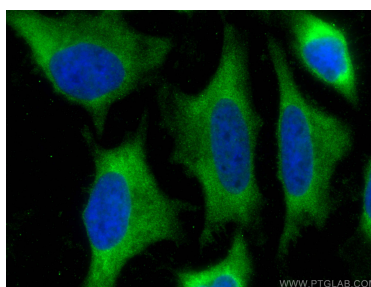
Various lysates were subjected to SDS PAGE followed by western blot with 66245-1-Ig (Annexin V antibody) at dilution of 1:20000 incubated at room temperature for 1.5 hours.



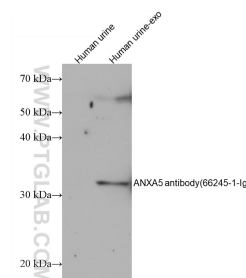
Mouse brain tissue were subjected to SDS PAGE followed by western blot with 66245-1-Ig (Annexin V antibody) at dilution of 1:20000 incubated at room temperature for 1.5 hours.



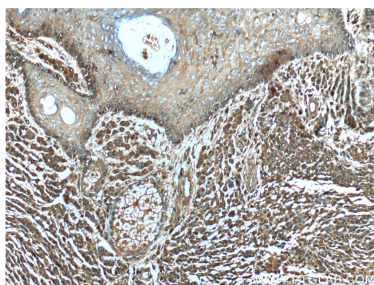
WB result of Annexin V antibody (66245-1-Ig; 1:10000; incubated at room temperature for 1.5 hours) with sh-Control and sh-Annexin V transfected HeLa cells.



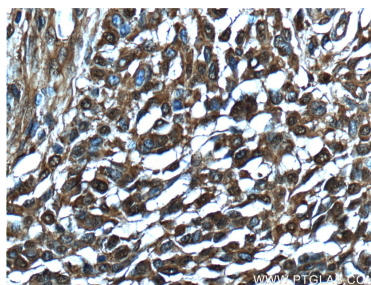
Immunofluorescent analysis of (-20°C Methanol) fixed HeLa cells using Annexin V antibody (66245-1-Ig, Clone: 1E6A8 ) at dilution of 1:800 and CoraLite®488-Conjugated AffiniPure Goat Anti-Mouse IgG(H+L).



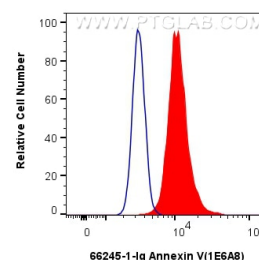
Various lysates were subjected to SDS PAGE followed by western blot with 66245-1-Ig (Annexin V antibody) at dilution of 1:5000 incubated at room temperature for 1.5 hours.



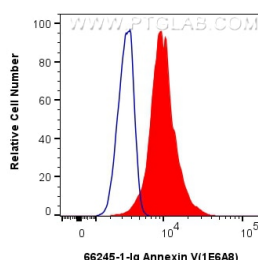
Immunohistochemical analysis of paraffin-embedded human malignant melanoma tissue slide using 66245-1-Ig (Annexin V) antibody at dilution of 1:200 (under 10x lens).



Immunohistochemical analysis of paraffin-embedded human malignant melanoma tissue slide using 66245-1-Ig (Annexin V) antibody at dilution of 1:200 (under 40x lens).



1x10<sup>6</sup> NIH/3T3 cells were intracellularly stained with 0.25 ug Annexin V Monoclonal antibody (66245-1-Ig, Clone:1E6A8) and CoraLite®488-Conjugated Goat Anti-Mouse IgG(H+L) (SA00013-1) (red), or 0.25 ug Mouse IgG1 isotype control Mouse McAb (66360-1-Ig, Clone: 1F8D3) (blue). Cells were fixed with 4% PFA and permeabilized with Flow Cytometry Perm Buffer (PF00011-C).



1x10<sup>6</sup> HeLa cells were intracellularly stained with 0.25 ug Annexin V Monoclonal antibody (66245-1-Ig, Clone:1E6A8) and CoraLite®488-Conjugated Goat Anti-Mouse IgG(H+L) (SA00013-1)(red), or 0.25 ug Mouse IgG1 isotype control Mouse McAb (66360-1-Ig, Clone: 1F8D3) (blue). Cells were fixed with 4% PFA and permeabilized with Flow Cytometry Perm Buffer (PF00011-C).