

For Research Use Only

14-3-3 Sigma Monoclonal antibody, PBS Only



Catalog Number: 66251-1-PBS

Basic Information

| | | |
|---|--|---|
| Catalog Number: 66251-1-PBS | GenBank Accession Number: BC002995 | Purification Method: Protein G purification |
| Size: 100ug, Concentration: 1 mg/ml by Nanodrop; | GeneID (NCBI): 2810 | CloneNo.: 3F10D9 |
| Source: Mouse | UNIPROT ID: P31947 | |
| Isotype: IgG1 | Full Name: stratifin | |
| Immunogen Catalog Number: AG12644 | Calculated MW: 28 kDa | |
| | Observed MW: 28-30 kDa | |

Applications

Tested Applications:
WB, IF, IHC, Indirect ELISA

Species Specificity:
human

Background Information

14-3-3 Sigma is a member 14-3-3 family of highly conserved proteins participating in diverse cellular processes including cell cycle progression. It is exclusively present in various epithelial cells, and alternatively named as human epithelial marker (HEM), or stratifin. Alteration of its expression has been linked to cancer.

Storage

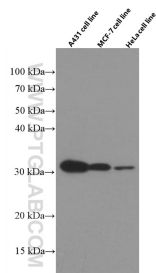
Storage:
Store at -80°C.

Storage Buffer:
PBS Only

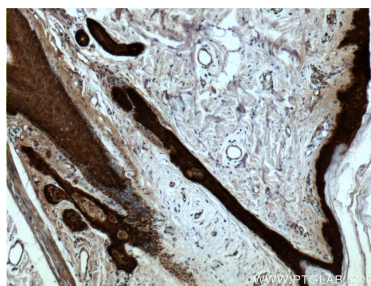
For technical support and original validation data for this product please contact:
T: 1 (888) 4PTGLAB (1-888-478-4522) (toll free in USA), or 1(312) 455-8498 (outside USA)
E: proteintech@ptglab.com
W: ptglab.com

This product is exclusively available under Proteintech Group brand and is not available to purchase from any other manufacturer.

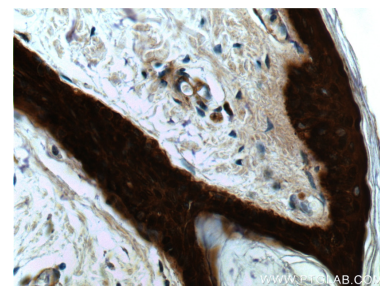
Selected Validation Data



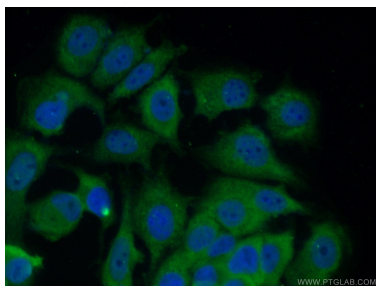
Various cell lysates were subjected to SDS PAGE followed by western blot with 66251-1-Ig (14-3-3 sigma antibody) at dilution of 1:7000 incubated at room temperature for 1.5 hours. This data was developed using the same antibody clone with 66251-1-PBS in a different storage buffer formulation.



Immunohistochemical analysis of paraffin-embedded human skin tissue slide using 66251-1-Ig (14-3-3 sigma antibody at dilution of 1:2000 (under 10x lens). This data was developed using the same antibody clone with 66251-1-PBS in a different storage buffer formulation.



Immunohistochemical analysis of paraffin-embedded human skin tissue slide using 66251-1-Ig (14-3-3 sigma antibody at dilution of 1:2000 (under 40x lens). This data was developed using the same antibody clone with 66251-1-PBS in a different storage buffer formulation.



Immunofluorescent analysis of MCF-7 cells using 66251-1-Ig (14-3-3 sigma antibody) at dilution of 1:100 and Alexa Fluor 488-conjugated AffiniPure Goat Anti-Mouse IgG (H+L). This data was developed using the same antibody clone with 66251-1-PBS in a different storage buffer formulation.