

CD11a/Integrin Alpha L Monoclonal antibody

Catalog Number: 66256-1-Ig

Basic Information

Catalog Number: 66256-1-Ig	GenBank Accession Number: BC008777	Purification Method: Protein A purification
Size: 150ul, Concentration: 3263 ug/ml by Nanodrop and 1333 ug/ml by Bradford method using BSA as the standard;	GeneID (NCBI): 3683	CloneNo.: 1E3H12
Source: Mouse	ENSEMBL Gene ID: ENSG00000005844	Recommended Dilutions: WB 1:5000-1:50000 IHC 1:20-1:200 IF-P 1:200-1:800 IF/ICC 1:400-1:1600
Isotype: IgG1	UNIPROT ID: P20701	
Immunogen Catalog Number: AG7813	Full Name: integrin, alpha L (antigen CD11A (p180), lymphocyte function-associated antigen 1; alpha polypeptide)	
	Calculated MW: 129 kDa	
	Observed MW: 180 kDa	

Applications

Tested Applications: WB, IHC, IF/ICC, IF-P, ELISA	Positive Controls:
Species Specificity: human	WB : Ramos cells,
Note-IHC: suggested antigen retrieval with TE buffer pH 9.0; (*) Alternatively, antigen retrieval may be performed with citrate buffer pH 6.0	IHC : human tonsillitis tissue,
	IF-P : human tonsillitis tissue, Jurkat cells
	IF/ICC : Jurkat cells,

Background Information

CD11a, also known as integrin α L or LFA-1 α , is a 170-180 kDa transmembrane glycoprotein that forms a heterodimer with CD18 (PMID: 7027264; 1672643). CD11a/CD18 (LFA-1) is expressed by all leukocytes and mediates cell adhesion through interactions with its ligands, intercellular adhesion molecule 1 (ICAM-1), ICAM-2, and ICAM-3 (PMID: 7479767). CD11a/CD18 also functions in lymphocyte costimulatory signaling (PMID: 1972160).

Storage

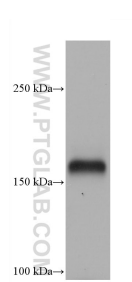
Storage:
Store at -20°C. Stable for one year after shipment.
Storage Buffer:
PBS with 0.02% sodium azide and 50% glycerol pH 7.3.
Aliquoting is unnecessary for -20°C storage

*** 20ul sizes contain 0.1% BSA

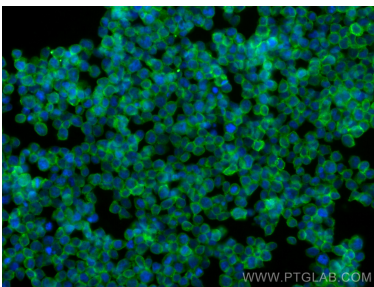
For technical support and original validation data for this product please contact:
T: 1 (888) 4PTGLAB (1-888-478-4522) (toll free in USA), or 1(312) 455-8498 (outside USA)
E: proteintech@ptglab.com
W: ptglab.com

This product is exclusively available under Proteintech Group brand and is not available to purchase from any other manufacturer.

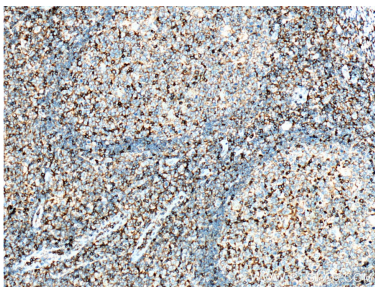
Selected Validation Data



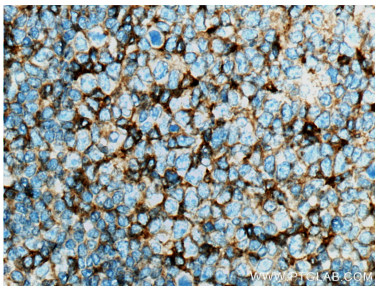
Ramos cells were subjected to SDS PAGE followed by western blot with 66256-1-Ig (CD11a/Integrin Alpha L antibody) at dilution of 1:10000 incubated at room temperature for 1.5 hours.



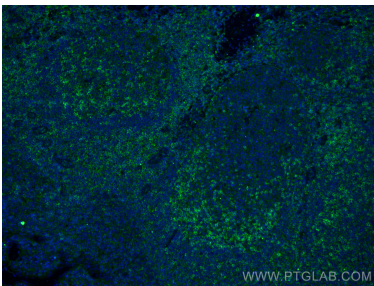
Immunofluorescent analysis of (4% PFA) fixed Jurkat cells using CD11a/Integrin Alpha L antibody (66256-1-Ig, Clone: 1E3H12) at dilution of 1:800 and CoraLite®488-Conjugated Goat Anti-Mouse IgG(H+L) (SA00013-1).



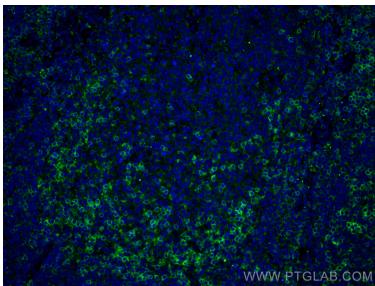
Immunohistochemical analysis of paraffin-embedded human tonsillitis tissue slide using 66256-1-Ig (CD11a/Integrin alpha-L antibody) at dilution of 1:500 (under 10x lens. Heat mediated antigen retrieval with Tris-EDTA buffer (pH 9.0).



Immunohistochemical analysis of paraffin-embedded human tonsillitis tissue slide using 66256-1-Ig (CD11a/Integrin alpha-L antibody) at dilution of 1:500 (under 40x lens. Heat mediated antigen retrieval with Tris-EDTA buffer (pH 9.0).



Immunofluorescent analysis of (4% PFA) fixed human tonsillitis tissue using CD11a/Integrin Alpha L antibody (66256-1-Ig, Clone: 1E3H12) at dilution of 1:400 and CoraLite®488-Conjugated AffiniPure Goat Anti-Mouse IgG(H+L).



Immunofluorescent analysis of (4% PFA) fixed human tonsillitis tissue using CD11a/Integrin Alpha L antibody (66256-1-Ig, Clone: 1E3H12) at dilution of 1:400 and CoraLite®488-Conjugated AffiniPure Goat Anti-Mouse IgG(H+L).