

For Research Use Only

Nestin Monoclonal antibody, PBS Only



Catalog Number: 66259-1-PBS

Basic Information

Catalog Number: 66259-1-PBS	GenBank Accession Number: NM_006617	Purification Method: Protein A purification
Size: 100ug , Concentration: 1 mg/ml by Nanodrop;	GeneID (NCBI): 10763	CloneNo.: 1D11H2
Source: Mouse	UNIPROT ID: P48681	
Isotype: IgG2b	Full Name: nestin	
	Calculated MW: 177 kDa	
	Observed MW: 150-170 kDa	

Applications

Tested Applications:
WB, Indirect ELISA

Species Specificity:
human, mouse, rat

Background Information

Nestin, also named as NES and Nbla00170, is a class VI intermediate filament protein expressed in stem cells of the central nervous system (CNS) but not in mature CNS cells. Its expression is used extensively as a marker for neural lineage cells derived from human embryonic stem (hES) and induced pluripotent stem (iPS) cells. Nestin is also expressed in non-neural stem cell populations such as pancreatic islet progenitors and hematopoietic progenitors.

Storage

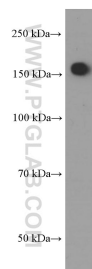
Storage:
Store at -80°C.

Storage Buffer:
PBS Only

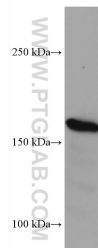
For technical support and original validation data for this product please contact:
T: 1 (888) 4PTGLAB (1-888-478-4522) (toll free in USA), or 1(312) 455-8498 (outside USA)
E: proteintech@ptglab.com
W: ptglab.com

This product is exclusively available under Proteintech Group brand and is not available to purchase from any other manufacturer.

Selected Validation Data



Neuro-2a cells were subjected to SDS PAGE followed by western blot with 66259-1-Ig (Nestin Antibody) at dilution of 1:1000 incubated at room temperature for 1.5 hours. This data was developed using the same antibody clone with 66259-1-PBS in a different storage buffer formulation.



HEK-293 cells were subjected to SDS PAGE followed by western blot with 66259-1-Ig (Nestin antibody) at dilution of 1:20000 incubated at room temperature for 1.5 hours. This data was developed using the same antibody clone with 66259-1-PBS in a different storage buffer formulation.