

For Research Use Only

Alpha 1B-Glycoprotein Monoclonal antibody



Catalog Number: 66260-1-Ig

Basic Information

Catalog Number: 66260-1-Ig	GenBank Accession Number: BC035719	Purification Method: Protein G purification
Size: 150ul , Concentration: 1100 µg/ml by 1 Nanodrop and 893 µg/ml by Bradford method using BSA as the standard;	GeneID (NCBI): Full Name: alpha-1-B glycoprotein	CloneNo.: 4D4E5
Source: Mouse	Calculated MW: 54 kDa	Recommended Dilutions: WB 1:5000-1:50000 IHC 1:50-1:500 IF 1:50-1:500
Isotype: IgG1	Observed MW: 72 kDa	
Immunogen Catalog Number: AG5414		

Applications

Tested Applications: IF, IHC, WB, ELISA	Positive Controls:
Species Specificity: human	WB : human plasma, human heart tissue, human placenta tissue
Note-IHC: suggested antigen retrieval with TE buffer pH 9.0; (*) Alternatively, antigen retrieval may be performed with citrate buffer pH 6.0	IHC : human liver tissue, IF : HepG2 cells,

Background Information

Alpha-1B-glycoprotein (A1BG) is a plasma protein and is a member of the immunoglobulin superfamily. A1BG contains 474 amino acids and has 5 intrachain disulfide bonds. It has been reported that cysteine-rich secretory protein 3 (CRISP-3) is a specific and high-affinity ligand of A1BG. A1BG-CRISP-3 complex displays a similar function in protecting the circulation from a potentially harmful effect of free CRISP3 (PMID: 15461460).

Storage

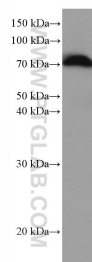
Storage:
Store at -20°C. Stable for one year after shipment.
Storage Buffer:
PBS with 0.02% sodium azide and 50% glycerol pH 7.3.
Aliquoting is unnecessary for -20° C storage

*** 20ul sizes contain 0.1% BSA

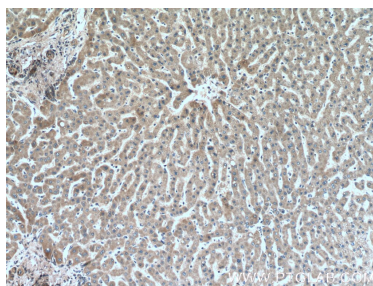
For technical support and original validation data for this product please contact:
T: 1 (888) 4PTGLAB (1-888-478-4522) (toll free in USA), or 1(312) 455-8498 (outside USA)
E: proteintech@ptglab.com
W: ptglab.com

This product is exclusively available under Proteintech Group brand and is not available to purchase from any other manufacturer.

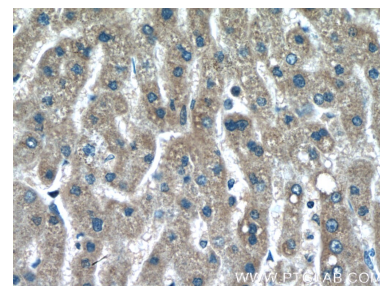
Selected Validation Data



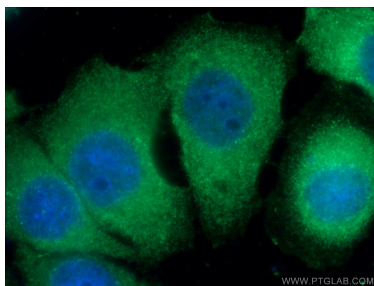
human plasma were subjected to SDS PAGE followed by western blot with 66260-1-Ig (Alpha 1B-Glycoprotein antibody) at dilution of 1:50000 incubated at room temperature for 1.5 hours.



Immunohistochemical analysis of paraffin-embedded human liver tissue slide using 66260-1-Ig (alpha-1B-glycoprotein antibody) at dilution of 1:200 (under 10x lens).



Immunohistochemical analysis of paraffin-embedded human liver tissue slide using 66260-1-Ig (alpha-1B-glycoprotein antibody) at dilution of 1:200 (under 40x lens).



Immunofluorescent analysis of (-20°C Ethanol) fixed HepG2 cells using 66260-1-Ig (alpha-1B-glycoprotein antibody) at dilution of 1:100 and Alexa Fluor 488-Conjugated AffiniPure Goat Anti-Mouse IgG(H+L).