

For Research Use Only



Alpha 1B-Glycoprotein Monoclonal antibody, PBS Only

Catalog Number: 66260-1-PBS

Basic Information

Catalog Number: 66260-1-PBS	GenBank Accession Number: BC035719	Purification Method: Protein G purification
Size: 100ug , Concentration: 1 mg/ml by Nanodrop;	GeneID (NCBI): 1	CloneNo.: 4D4E5
Source: Mouse	UNIPROT ID: P04217	
Isotype: IgG1	Full Name: alpha-1-B glycoprotein	
Immunogen Catalog Number: AG5414	Calculated MW: 54 kDa	
	Observed MW: 72 kDa	

Applications

Tested Applications:
WB, IF, IHC, Indirect ELISA

Species Specificity:
human

Background Information

Alpha-1B-glycoprotein (A1BG) is a plasma protein and is a member of the immunoglobulin superfamily. A1BG contains 474 amino acids and has 5 intrachain disulfide bonds. It has been reported that cysteine-rich secretory protein 3 (CRISP-3) is a specific and high-affinity ligand of A1BG. A1BG-CRISP-3 complex displays a similar function in protecting the circulation from a potentially harmful effect of free CRISP3 (PMID: 15461460).

Storage

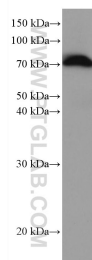
Storage:
Store at -80°C.

Storage Buffer:
PBS Only

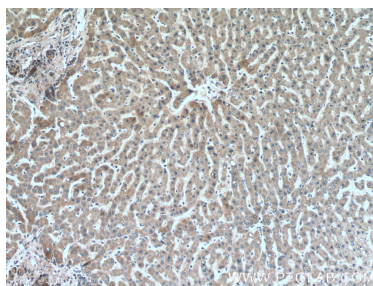
For technical support and original validation data for this product please contact:
T: 1 (888) 4PTGLAB (1-888-478-4522) (toll free in USA), or 1(312) 455-8498 (outside USA)
E: proteintech@ptglab.com
W: ptglab.com

This product is exclusively available under Proteintech Group brand and is not available to purchase from any other manufacturer.

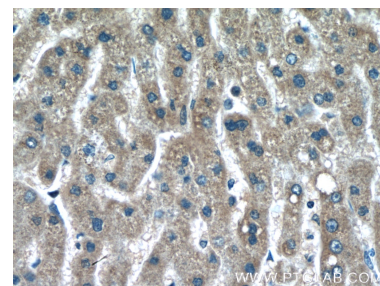
Selected Validation Data



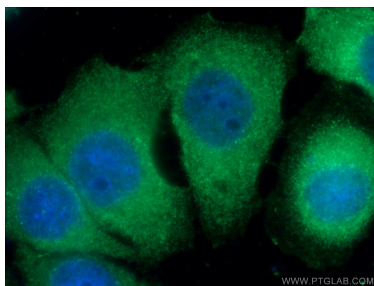
human plasma were subjected to SDS PAGE followed by western blot with 66260-1-Ig (Alpha 1B-Glycoprotein antibody) at dilution of 1:50000 incubated at room temperature for 1.5 hours. This data was developed using the same antibody clone with 66260-1-PBS in a different storage buffer formulation.



Immunohistochemical analysis of paraffin-embedded human liver tissue slide using 66260-1-Ig (alpha-1B-glycoprotein antibody) at dilution of 1:200 (under 10x lens). This data was developed using the same antibody clone with 66260-1-PBS in a different storage buffer formulation.



Immunohistochemical analysis of paraffin-embedded human liver tissue slide using 66260-1-Ig (alpha-1B-glycoprotein antibody) at dilution of 1:200 (under 40x lens). This data was developed using the same antibody clone with 66260-1-PBS in a different storage buffer formulation.



Immunofluorescent analysis of (-20°C Ethanol) fixed HepG2 cells using 66260-1-Ig (alpha-1B-glycoprotein antibody) at dilution of 1:100 and Alexa Fluor 488-Conjugated AffiniPure Goat Anti-Mouse IgG(H+L). This data was developed using the same antibody clone with 66260-1-PBS in a different storage buffer formulation.