

For Research Use Only

# SRPX2 Monoclonal antibody

Catalog Number: 66266-1-Ig

Featured Product

3 Publications



## Basic Information

<b>Catalog Number:</b> 66266-1-Ig	<b>GenBank Accession Number:</b> BC020733	<b>Purification Method:</b> Protein A purification
<b>Size:</b> 150ul , Concentration: 2900 µg/ml by Nanodrop and 1500 µg/ml by Bradford method using BSA as the standard;	<b>GeneID (NCBI):</b> 27286	<b>CloneNo.:</b> 2A1D7
<b>Source:</b> Mouse	<b>Full Name:</b> sushi-repeat-containing protein, X-linked 2	<b>Recommended Dilutions:</b> WB 1:500-1:2000 IHC 1:200-1:800 IF 1:200-1:800
<b>Isotype:</b> IgG2b	<b>Calculated MW:</b> 465 aa, 53 kDa	
<b>Immunogen Catalog Number:</b> AG8084	<b>Observed MW:</b> 53 kDa	

## Applications

### Tested Applications:

IF, IHC, WB, ELISA

### Cited Applications:

IF, IHC, WB

### Species Specificity:

human, pig, mouse

### Cited Species:

human, mouse

**Note-IHC: suggested antigen retrieval with TE buffer pH 9.0; (\*) Alternatively, antigen retrieval may be performed with citrate buffer pH 6.0**

### Positive Controls:

WB : pig lung tissue, A549 cells

IHC : mouse brain tissue,

IF : A549 cells,

## Background Information

SRPX2 (sushi-repeat-containing protein, X-linked 2) is a secreted protein expressed in neurons of the human adult brain, including the rolandic area (PMID: 20874700). Firstly described as sushi-repeat protein up-regulated in leukemia (SPRUL) in leukemia cells with dysregulated expression at the transcriptional level, SRPX2 has been recently shown as a multifunctional protein. SRPX2 is a ligand for uPAR, the urokinase-type plasminogen activator (uPA) receptor (PMID: 18718938). It is involved in seizure disorders, angiogenesis and cellular adhesion (PMID: 22242148; 19667118; 16497722). The involvement of SRPX2 in disorders of language cortex suggests it has an important role in the perisylvian region critical for language and cognitive development (PMID: 16497722).

## Notable Publications

Author	Pubmed ID	Journal	Application
Meng Zhang	29881288	Onco Targets Ther	WB,IHC
Mehwish Anwer	29663392	J Comp Neurol	WB,IHC,IF
Jianyun Liu	37543430	Aging (Albany NY)	WB

## Storage

### Storage:

Store at -20°C. Stable for one year after shipment.

### Storage Buffer:

PBS with 0.02% sodium azide and 50% glycerol pH 7.3.

Aliquoting is unnecessary for -20°C storage

\*\*\* 20ul sizes contain 0.1% BSA

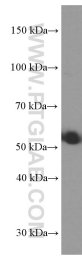
For technical support and original validation data for this product please contact:

T: 1 (888) 4PTGLAB (1-888-478-4522) (toll free in USA), or 1(312) 455-8498 (outside USA)

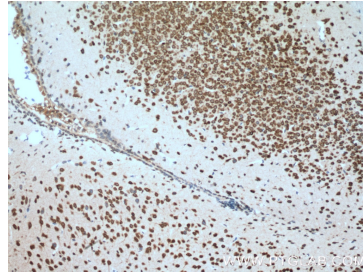
E: proteintech@ptglab.com  
W: ptglab.com

This product is exclusively available under Proteintech Group brand and is not available to purchase from any other manufacturer.

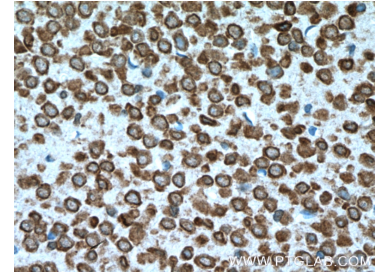
## Selected Validation Data



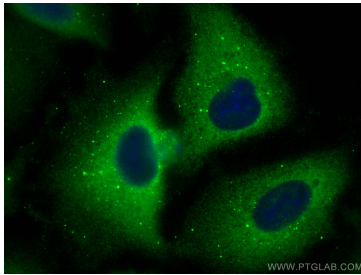
pig lung tissue were subjected to SDS PAGE followed by western blot with 66266-1-Ig (SRP)2 antibody) at dilution of 1:1000 incubated at room temperature for 1.5 hours.



Immunohistochemical analysis of paraffin-embedded mouse brain tissue slide using 66266-1-Ig (SRP)2 Antibody) at dilution of 1:400 (under 10x lens). Heat mediated antigen retrieval with Tris-EDTA buffer (pH 9.0).



Immunohistochemical analysis of paraffin-embedded mouse brain tissue slide using 66266-1-Ig (SRP)2 Antibody) at dilution of 1:400 (under 40x lens). Heat mediated antigen retrieval with Tris-EDTA buffer (pH 9.0).



Immunofluorescent analysis of (-20°C Methanol) fixed A549 cells using SRP)2 antibody (66266-1-Ig, Clone: 2A1D7) at dilution of 1:400 and CoraLite®488-Conjugated AffiniPure Goat Anti-Mouse IgG(H+L).