

For Research Use Only

# C1qC Monoclonal antibody

Catalog Number: 66268-1-Ig **4 Publications**



## Basic Information

<b>Catalog Number:</b> 66268-1-Ig	<b>GenBank Accession Number:</b> BC009016	<b>Purification Method:</b> Thiophilic affinity chromatograph
<b>Size:</b> 150ul , Concentration: 680 ug/ml by Bradford method using BSA as the standard;	<b>GeneID (NCBI):</b> 714	<b>CloneNo.:</b> 1C5B4
<b>Source:</b> Mouse	<b>UNIPROT ID:</b> P02747	<b>Recommended Dilutions:</b> WB 1:1000-1:4000 IF/ICC 1:400-1:1600
<b>Isotype:</b> IgM	<b>Full Name:</b> complement component 1, q subcomponent, C chain	
<b>Immunogen Catalog Number:</b> AG10233	<b>Calculated MW:</b> 245 aa, 26 kDa	
	<b>Observed MW:</b> 26 kDa	

## Applications

<b>Tested Applications:</b> WB, IF/ICC, ELISA	<b>Positive Controls:</b> WB : human plasma tissue, IF/ICC : HUVEC cells,
<b>Cited Applications:</b> WB, IF	
<b>Species Specificity:</b> human	
<b>Cited Species:</b> human, rat	

## Background Information

The first component of complement, C1, is a calcium-dependent complex of the 3 subcomponents C1q, C1r, and C1s. C1q is composed of 18 polypeptide chains: six A-chains, six B-chains, and six C-chains. Each chain contains a collagen-like region located near the N terminus and a C-terminal globular region. Deficiency of C1q has been associated with lupus erythematosus and glomerulonephritis. This antibody is raised against C1qC which is the C-chain polypeptide of human complement subcomponent C1q.

## Notable Publications

Author	Pubmed ID	Journal	Application
Lingyu Pan	35525530	J Ethnopharmacol	WB
Hanji Huang	33707956	Onco Targets Ther	WB
Anika Alberts	32286427	Sci Rep	WB

## Storage

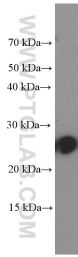
**Storage:**  
Store at -20°C. Stable for one year after shipment.  
**Storage Buffer:**  
PBS with 0.02% sodium azide and 50% glycerol pH 7.3.  
Aliquoting is unnecessary for -20°C storage

\*\*\* 20ul sizes contain 0.1% BSA

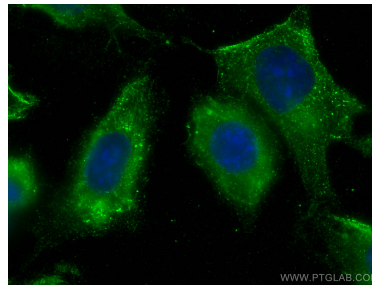
For technical support and original validation data for this product please contact:  
T: 1 (888) 4PTGLAB (1-888-478-4522) (toll free in USA), or 1(312) 455-8498 (outside USA)  
E: proteintech@ptglab.com  
W: ptglab.com

This product is exclusively available under Proteintech Group brand and is not available to purchase from any other manufacturer.

## Selected Validation Data



human plasma were subjected to SDS PAGE followed by western blot with 66268-1-Ig (C1QC Antibody) at dilution of 1:2000 incubated at room temperature for 1.5 hours.



Immunofluorescent analysis of (-20°C Methanol) fixed HUVEC cells using C1qC antibody (66268-1-Ig, Clone: 1C5B4) at dilution of 1:800 and CoraLite®488-Conjugated Goat Anti-Mouse IgG(H+L).