

For Research Use Only

# L2HGDH Monoclonal antibody

Catalog Number: 66269-1-Ig



## Basic Information

<b>Catalog Number:</b> 66269-1-Ig	<b>GenBank Accession Number:</b> BC006117	<b>Purification Method:</b> Protein A purification
<b>Size:</b> 150ul , Concentration: 2100 ug/ml by Nanodrop and 1320 ug/ml by Bradford method using BSA as the standard;	<b>GeneID (NCBI):</b> 79944	<b>CloneNo.:</b> 3D11C2
<b>Source:</b> Mouse	<b>UNIPROT ID:</b> Q9H9P8	<b>Recommended Dilutions:</b> WB 1:500-1:2000 IHC 1:100-1:400 IF-P 1:200-1:800
<b>Isotype:</b> IgG2a	<b>Full Name:</b> L-2-hydroxyglutarate dehydrogenase	
<b>Immunogen Catalog Number:</b> AG8382	<b>Calculated MW:</b> 463aa, 50 kDa; 441aa, 49 kDa	
	<b>Observed MW:</b> 45 kDa	

## Applications

<b>Tested Applications:</b> WB, IHC, IF-P, ELISA	<b>Positive Controls:</b>
<b>Species Specificity:</b> human, pig	<b>WB :</b> pig brain tissue, MCF-7 cells
<b>Note-IHC: suggested antigen retrieval with TE buffer pH 9.0; (*) Alternatively, antigen retrieval may be performed with citrate buffer pH 6.0</b>	<b>IHC :</b> human breast cancer tissue,
	<b>IF-P :</b> human breast cancer tissue,

## Background Information

L2HGDH(L-2-hydroxyglutarate dehydrogenase, mitochondrial) is also named as duranin, C14orf160 and belongs to the L2HGDH family. The putative L2HGDH is predicted to be targeted to the mitochondria where its mitochondrial targeting sequence is presumably removed(PMID:16005139). Defects in L2HGDH are the cause of L-2-hydroxyglutaric aciduria (L2HGA). It has 2 isoforms produced by alternative splicing with the molecular weight of 50 kDa and 48 kDa. L2HGDH also can be detected as ~45kD due to the 51aa transit peptide cleaved.

## Storage

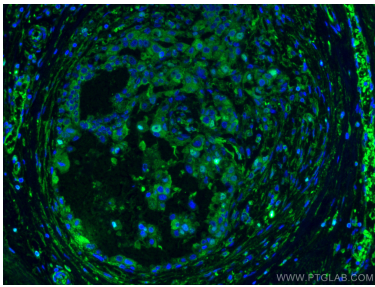
**Storage:**  
Store at -20°C. Stable for one year after shipment.  
**Storage Buffer:**  
PBS with 0.02% sodium azide and 50% glycerol pH 7.3.  
**Aliquoting is unnecessary for -20°C storage**

\*\*\* 20ul sizes contain 0.1% BSA

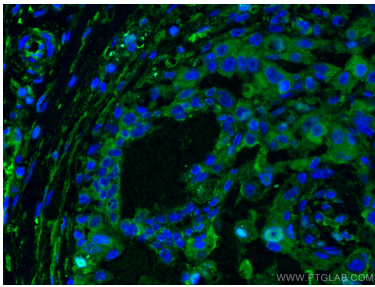
For technical support and original validation data for this product please contact:  
T: 1 (888) 4PTGLAB (1-888-478-4522) (toll free in USA), or 1(312) 455-8498 (outside USA)  
E: proteintech@ptglab.com  
W: ptglab.com

This product is exclusively available under Proteintech Group brand and is not available to purchase from any other manufacturer.

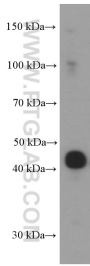
Selected Validation Data



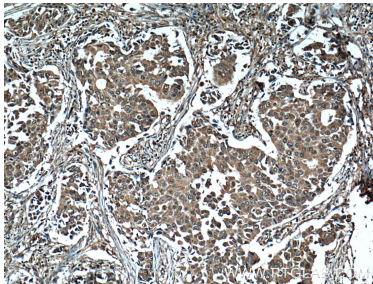
Immunofluorescent analysis of (4% PFA) fixed human breast cancer tissue using L2HGDH antibody (66269-1-Ig, Clone: 3D11C2 ) at dilution of 1:400 and CoraLite®488-Conjugated AffiniPure Goat Anti-Mouse IgG(H+L).



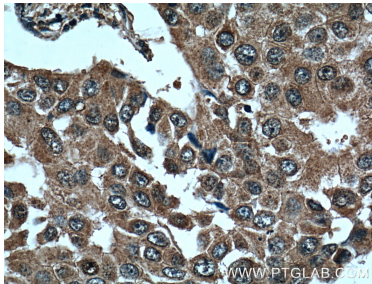
Immunofluorescent analysis of (4% PFA) fixed human breast cancer tissue using L2HGDH antibody (66269-1-Ig, Clone: 3D11C2 ) at dilution of 1:400 and CoraLite®488-Conjugated AffiniPure Goat Anti-Mouse IgG(H+L).



pig brain tissue were subjected to SDS PAGE followed by western blot with 66269-1-Ig (L2HGDH Antibody) at dilution of 1:1000 incubated at room temperature for 1.5 hours.



Immunohistochemical analysis of paraffin-embedded human breast cancer tissue slide using 66269-1-Ig (L2HGDH Antibody) at dilution of 1:200 (under 10x lens). Heat mediated antigen retrieval with Tris-EDTA buffer (pH 9.0).



Immunohistochemical analysis of paraffin-embedded human breast cancer tissue slide using 66269-1-Ig (L2HGDH Antibody) at dilution of 1:200 (under 40x lens). Heat mediated antigen retrieval with Tris-EDTA buffer (pH 9.0).