

For Research Use Only

L2HGDH Monoclonal antibody

Catalog Number: 66269-1-Ig



Basic Information

Catalog Number: 66269-1-Ig	GenBank Accession Number: BC006117	Purification Method: Protein A purification
Size: 150ul , Concentration: 2100 µg/ml by Nanodrop and 1320 µg/ml by Bradford method using BSA as the standard;	GeneID (NCBI): 79944	CloneNo.: 3D11C2
Source: Mouse	Full Name: L-2-hydroxyglutarate dehydrogenase	Recommended Dilutions: WB 1:500-1:2000 IHC 1:100-1:400 IF 1:200-1:800
Isotype: IgG2a	Calculated MW: 463aa,50 kDa; 441aa,49 kDa	
Immunogen Catalog Number: AG8382	Observed MW: 45 kDa	

Applications

Tested Applications: IF, IHC, WB, ELISA	Positive Controls: WB : pig brain tissue, MCF-7 cells
Species Specificity: human, pig	IHC : human breast cancer tissue, IF : human breast cancer tissue,
Note-IHC: suggested antigen retrieval with TE buffer pH 9.0; (*) Alternatively, antigen retrieval may be performed with citrate buffer pH 6.0	

Background Information

L2HGDH(L-2-hydroxyglutarate dehydrogenase, mitochondrial) is also named as duranin, C14orf160 and belongs to the L2HGDH family. The putative L2HGDH is predicted to be targeted to the mitochondria where its mitochondrial targeting sequence is presumably removed(PMID:16005139). Defects in L2HGDH are the cause of L-2-hydroxyglutaric aciduria (L2HGA). It has 2 isoforms produced by alternative splicing with the molecular weight of 50 kDa and 48 kDa. L2HGDH also can be detected as ~45kD due to the 51aa transit peptide cleaved.

Storage

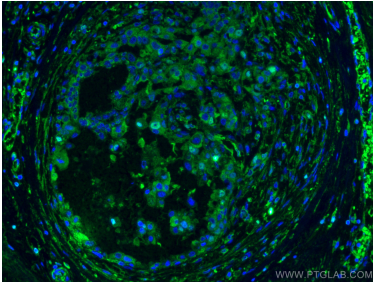
Storage:
Store at -20°C. Stable for one year after shipment.
Storage Buffer:
PBS with 0.02% sodium azide and 50% glycerol pH 7.3.
Aliquoting is unnecessary for -20°C storage

***** 20ul sizes contain 0.1% BSA**

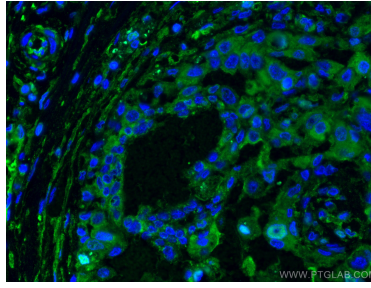
For technical support and original validation data for this product please contact:
T: 1 (888) 4PTGLAB (1-888-478-4522) (toll free in USA), or 1(312) 455-8498 (outside USA)
E: proteintech@ptglab.com
W: ptglab.com

This product is exclusively available under Proteintech Group brand and is not available to purchase from any other manufacturer.

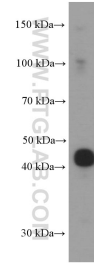
Selected Validation Data



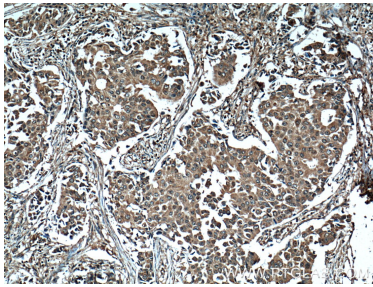
Immunofluorescent analysis of (4% PFA) fixed human breast cancer tissue using L2HGDH antibody (66269-1-Ig, Clone: 3D11C2) at dilution of 1:400 and CoraLite@488-Conjugated AffiniPure Goat Anti-Mouse IgG(H+L).



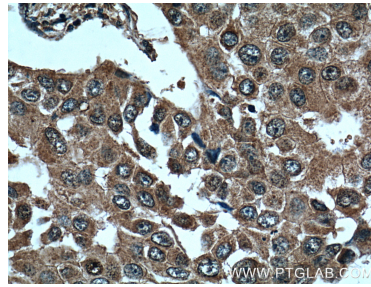
Immunofluorescent analysis of (4% PFA) fixed human breast cancer tissue using L2HGDH antibody (66269-1-Ig, Clone: 3D11C2) at dilution of 1:400 and CoraLite@488-Conjugated AffiniPure Goat Anti-Mouse IgG(H+L).



pig brain tissue were subjected to SDS PAGE followed by western blot with 66269-1-Ig (L2HGDH Antibody) at dilution of 1:1000 incubated at room temperature for 1.5 hours.



Immunohistochemical analysis of paraffin-embedded human breast cancer tissue slide using 66269-1-Ig (L2HGDH Antibody) at dilution of 1:200 (under 10x lens). Heat mediated antigen retrieval with Tris-EDTA buffer (pH 9.0).



Immunohistochemical analysis of paraffin-embedded human breast cancer tissue slide using 66269-1-Ig (L2HGDH Antibody) at dilution of 1:200 (under 40x lens). Heat mediated antigen retrieval with Tris-EDTA buffer (pH 9.0).