

For Research Use Only

L2HGDH Monoclonal antibody, PBS Only



Catalog Number: 66269-1-PBS

Basic Information

Catalog Number: 66269-1-PBS	GenBank Accession Number: BC006117	Purification Method: Protein A purification
Size: 100ug , Concentration: 1 mg/ml by Nanodrop;	GeneID (NCBI): 79944	CloneNo.: 3D11C2
Source: Mouse	UNIPROT ID: Q9H9P8	
Isotype: IgG2a	Full Name: L-2-hydroxyglutarate dehydrogenase	
Immunogen Catalog Number: AG8382	Calculated MW: 463aa,50 kDa; 441aa,49 kDa	
	Observed MW: 45 kDa	

Applications

Tested Applications:
WB, IF, IHC, Indirect ELISA

Species Specificity:
human, pig

Background Information

L2HGDH(L-2-hydroxyglutarate dehydrogenase, mitochondrial) is also named as duranin, C14orf160 and belongs to the L2HGDH family. The putative L2HGDH is predicted to be targeted to the mitochondria where its mitochondrial targeting sequence is presumably removed(PMID:16005139). Defects in L2HGDH are the cause of L-2-hydroxyglutaric aciduria (L2HGA). It has 2 isoforms produced by alternative splicing with the molecular weight of 50 kDa and 48 kDa. L2HGDH also can be detected as ~45kD due to the 51aa transit peptide cleaved.

Storage

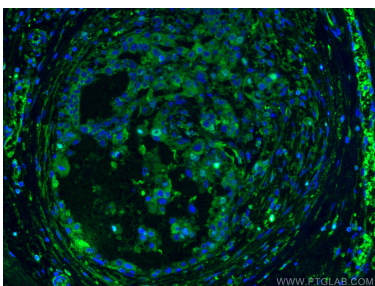
Storage:
Store at -80°C.

Storage Buffer:
PBS Only

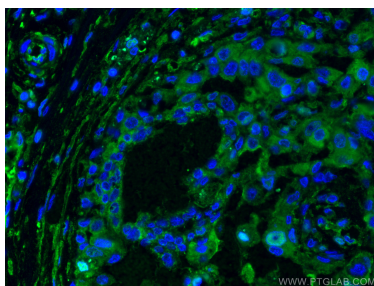
For technical support and original validation data for this product please contact:
T: 1 (888) 4PTGLAB (1-888-478-4522) (toll free in USA), or 1(312) 455-8498 (outside USA)
E: proteintech@ptglab.com
W: ptglab.com

This product is exclusively available under Proteintech Group brand and is not available to purchase from any other manufacturer.

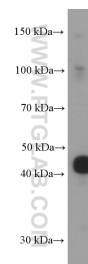
Selected Validation Data



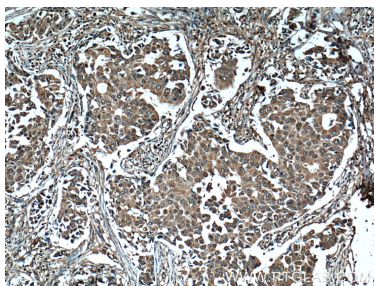
Immunofluorescent analysis of (4% PFA) fixed human breast cancer tissue using L2HGDH antibody (66269-1-Ig, Clone: 3D11C2) at dilution of 1:400 and CoraLite®488-Conjugated AffiniPure Goat Anti-Mouse IgG(H+L). This data was developed using the same antibody clone with 66269-1-PBS in a different storage buffer formulation.



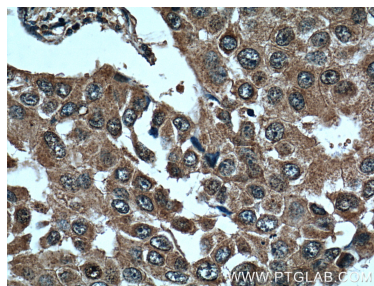
Immunofluorescent analysis of (4% PFA) fixed human breast cancer tissue using L2HGDH antibody (66269-1-Ig, Clone: 3D11C2) at dilution of 1:400 and CoraLite®488-Conjugated AffiniPure Goat Anti-Mouse IgG(H+L). This data was developed using the same antibody clone with 66269-1-PBS in a different storage buffer formulation.



pig brain tissue were subjected to SDS PAGE followed by western blot with 66269-1-Ig (L2HGDH Antibody) at dilution of 1:1000 incubated at room temperature for 1.5 hours. This data was developed using the same antibody clone with 66269-1-PBS in a different storage buffer formulation.



Immunohistochemical analysis of paraffin-embedded human breast cancer tissue slide using 66269-1-Ig (L2HGDH Antibody) at dilution of 1:200 (under 10x lens). Heat mediated antigen retrieval with Tris-EDTA buffer (pH 9.0). This data was developed using the same antibody clone with 66269-1-PBS in a different storage buffer formulation.



Immunohistochemical analysis of paraffin-embedded human breast cancer tissue slide using 66269-1-Ig (L2HGDH Antibody) at dilution of 1:200 (under 40x lens). Heat mediated antigen retrieval with Tris-EDTA buffer (pH 9.0). This data was developed using the same antibody clone with 66269-1-PBS in a different storage buffer formulation.